

# 关西 大阪府 商务手册

本手册介绍了日本2025年大阪世界博览会主办地区公司的相关重要信息，如相关展览和商业活动的详细信息。

让我们一起了解这些拥有独家开创性技术和创新的令人振奋的当地企业。把握这个良机，发掘宝贵的未来增长潜力！



编制本手册的目的是鼓励到访日本2025年大阪世界博览会的商务人士发掘关西地区(包括大阪府)的商机。手册的前半部分将介绍我们精心遴选出的57家拥有尖端独特技术的公司,它们主要位于大阪。

欢迎大家随时参观考察手册中的公司,我们热诚邀请您亲临公司,亲身体验它们的精湛技术,也许您能从中看到有助于拓展业务的宝贵机遇。

后半部分将详细介绍2025大阪世博会期间计划在大阪和更广泛的关西地区举办的30场展览和商务会议。通过这些活动,诚邀您发现关西各行业公司的实力和专长。

最后一页介绍的资源和指南可以帮助海外公司与关西地区(包括大阪)企业建立业务伙伴关系。希望您充分利用这些信息。

希望这本手册能满足您的需求。

## 目录

2025大阪世博会  
官方吉祥物  
MYAKU-MYAKU



欢迎光临大阪府和关西地区 .....	3
大阪府经济概述	
大阪工商会(OCCI)会长	
日本2025年世界博览会协会秘书长 .....	4
推荐的公司和工厂地图 .....	6
推荐参观考察的公司名录	
生命科学 .....	8
医疗保健 .....	11
碳中和 .....	14
尖端工艺 .....	16
人工智能和机器人 .....	20
其他先进技术 .....	21
2025年计划在大阪和关西地区举办的展览和商务会议 .....	27
2025年展览和商务会议日历表 .....	28
展览和商务会议列表 .....	29
海外公司获取帮助和建议的联系方式 .....	39



关西地区自古以来在日本历史扮演着重要角色，曾在几个世纪期间作为日本的政治、经济和文化中心。如今，关西地区依然充满活力，保持蓬勃发展。它拥有从传统制造到尖端技术产业的众多公司，其经济仅次于东京都。日本国内和来自世界各地的游客慕名来到这个独具特色的地区，其中包括日本西部最大的城市大阪、繁华的神户港，以拥有丰富历史遗产而闻名的京都和奈良。

大阪府政府属下的智库大阪工业与经济研究中心负责人Nobuo Kobayashi强调：“大阪府的经济特点是拥有从制造业到服务业的均衡产业结构，这是其关键优势之一。”他指出，在制造业业务广度上，日本其

# 欢迎光临大阪府和关西地区！

他地区无法与其比肩。该地区聚集了众多公司，营造出一个有利于促进相互间合作的环境。

关西地区（尤其是大阪）还拥有众多服务商，如专业贸易公司、软件开发公司、设计和互联网相关企业，以及会计和管理咨询公司。这种多元化服务为企业活动提供了有利环境。

此外，关西地区拥有多家日本顶尖大学和公司的研发中心，如诱导多能干细胞（iPS细胞）研究的全球领导者京都大学、以及大阪大学和神户大学。它们为生命科学和生物医学研究在内的广泛领域的产学研合作和联合发展提供了大量机会。

许多公司选择向关西地区拓展，因为与东京都会区相比，关西地区的办

公室租金、劳动力成本和生活费用较低，有助于企业控制运营成本，以及为员工提供舒适的生活方式。在关西城郊，有人气的餐饮区提供各式佳肴，有举世闻名的寺庙和神社等文化遗址，以及美丽的山川湖海，提供了许多休闲去处，这是关西地区的另一个主要吸引力。

若有意在关西地区拓展业务的，建议向大阪商业投资中心（O-BIC）获取帮助和征询意见。在2001财年至2023财年期间，大阪商业投资中心帮助吸引了678家外国公司到关西。该中心提供创业指导，并提供免费办公空间和住宅信息，同时还提供政府补贴方面的各项建议。可致电+81-6-6944-6298或通过其网站 (<https://o-bic.net/>) 查询。

2025年世界博览会（日本关西2025年大阪世博会）将于2025年4月13日至10月13日在大阪湾的人工岛“梦洲”举行。数百家包括多家来自关西地区的企业，正计划参展，它们每周轮流在展位上展示自己的专业知识并举办活动。

除了在2025大阪世博会参展的企业外，关西地区还拥有众多创新科技企业。例如，有碳中和行业的企业利用扇贝壳生产高强度环保塑料。在生命科学领域，有利用从美容美发店采集的头发样本进行体检方法研发的企业。此外，还有从汽车发动机零件制造商分拆出来的初创公司正在应用其精密加工技术进行医疗器械研发。

我们衷心希望您在本手册的帮助下，不仅可以参观世博会场馆，还可以考察当地企业、参加展览活动和商务会议、游览景点，亲身体验关西的魅力。





# Osaka: A City of Free Spirits

## Special Interviews

## We speak with the chairperson of the OCCI and The OCCI chief discusses the while the Expo representative highlights

### Q: How would you describe Osaka?

With a history as the "capital of merchants" for over 400 years, Osaka is renowned as a business hub. What sets Osaka's industry apart is its relative freedom from political and administrative influence, creating a liberal and open environment where businesspeople engage in trade, taking on responsibilities themselves. This self-reliant approach, combined with a strong sense of hospitality and a local culture of close, direct communication, makes Osaka a particularly welcoming and business-friendly destination for international visitors.

### Q: What distinguishes the business landscape of Osaka?

In Tokyo, around 60% of businesses are large corporations, while the remaining 40% are small and medium-sized enterprises (SMEs). In Osaka, the situation is reversed: almost 60% of companies are SMEs, making Osaka a city fundamentally supported by smaller businesses. Many companies here are involved in manufacturing and are owner-managed. Some possess rare technologies and command up to 90% global market shares in specialized sectors. There are also the bluest of blue-chip artisan manufacturing companies achieving impressive operating profit margins of 20% or even 30%. Success for such companies is driven by presidents who are deeply passionate about technological innovation. Additionally, since many Osaka businesses are owner-managed, company presidents often maintain close ties with employees and are strongly committed to human resource development.

### Q: Are Osaka's businesses especially focused on craftsmanship?

A defining characteristic of Osaka's artisan manufacturing companies is their enduring free spirit and openness, centered on businesspeople, a tradition that has continued for over 400 years. When faced with customer requests, they never respond with, "I can't do that." Instead, they embrace even seemingly insurmountable challenges, striving to find solutions and building trust by fulfilling their responsibilities. Beyond their hospitality, Osaka merchants embody a "fighting spirit." I sense an indomitable

spirit in Osaka people's history, a resilience that aligns with the demands of business.

### Q: Could you share some exhibition plans for Expo 2025?

The Expo will showcase Nest for Reborn, an exhibition project for the Osaka Healthcare Pavilion. We've been preparing for this event for five or six years, collaborating with various stakeholders since the previous chairperson's tenure. I'm particularly excited about the "dream-inspiring technologies" that will be featured, innovations that may not have immediate applications but open up new possibilities. For example, there will be "photosynthesizing clothing," in which plants are incorporated into fabric. Another innovative concept, the "wellness office," reimagines the workplace as a contributor to health by developing and incorporating a device that can measure health indicators such as blood sugar and blood pressure easily and contact-free. There will also be a "flying truck" airship designed to transport thinned wood from mountainous regions inaccessible to vehicles. Such bold technological challenges foster growth for all involved.

### Q: Could you elaborate on your efforts to attract foreign companies to Osaka?

In 2023, the OCCI, along with business associations from the member countries of the Association of Southeast Asian Nations (ASEAN), launched the ASEAN-Japan Business Promotion Platform to further expand business and strengthen economic ties between Japan and ASEAN. To emphasize the importance of these exchanges, I have personally met with the heads of chambers of commerce and industry from six ASEAN countries. During Expo 2025, I will take part in an inaugural in-person round table with my counterparts from ASEAN countries. The Expo will be a valuable opportunity to welcome international visitors to Osaka and other parts of Japan, fostering exchanges, including among corporate executives. Additionally, we aim to strengthen our links with Japan-based chambers of commerce and industry from partner countries in the Group of Seven (G-7) club. I believe Expo 2025 presents an exceptional chance to accelerate such exchanges.



Interview with  
**TORII Shingo,**  
Chairperson of the Osaka Chamber of  
Commerce and Industry (OCCI)



## the point person behind Expo 2025 Osaka, Kansai, Japan. latest industrial trends in Osaka, the event's most anticipated features.

**Q: Could you explain the theme of the Expo, “Designing Future Society for Our Lives”?**

Osaka was chosen as the host for Expo 2025 in November 2018. Since then, major global events such as the COVID-19 pandemic have underscored to everyone the significance of life. These developments have also highlighted the need to bridge divisions in our increasingly fragmented world. In response, we have built the Expo around the idea of “reconnecting the world and its people.” This theme is embodied in the venue's design, notably the Grand Ring, which both physically and symbolically connects different parts of the site. Within this expansive structure, participating countries will have the chance to present comprehensive portrayals of themselves over the course of six months under the theme, “Designing Future Society for Our Lives.” Each country will essentially say, “This is who we are as a nation” or “This is how our nation's science and technology, culture, history, and society have developed.”

**Q: How is Japanese technology being utilized at the Expo?**

One of the most remarkable displays of Japanese technology will be an artificial heart that beats like a real heart, created with induced pluripotent stem (iPS) cells. This is a breakthrough made possible by collaboration between university researchers and businesses. Another standout is the Grand Ring, a symbol of the Expo, which will be one of the world's largest wooden structures when completed, spanning a circumference of about 2 kilometers. This iconic structure uses the traditional Japanese construction technique known as “nukikoho,” which relies on intricate timber joints instead of nails, as seen in shrines and temples, adapted for a modern context. I'm certain that the Expo will offer a unique opportunity to experience such extraordinary Japanese technologies firsthand.

**Q: What business opportunities will be available to overseas companies?**

At the upcoming Expo, we are introducing an initiative called “Theme Weeks.” During the “Health and Well-Being” week, for example, there are plans to hold a medical equipment trade show called “Japan Health,” similar to Dubai's Arab Health, at an international site near the Expo venue. In addition, Japan's Ministry of Economy, Trade and Industry, along with organizations such as the Japan External Trade Organization (JETRO), will provide a variety of business-matching opportunities, including exhibitions and industry-specific meetings, in an effort to facilitate active business interactions between Japanese and foreign companies. Visiting business leaders will also have chances to experience the Kansai region's rich culinary culture and tourist attractions. Furthermore, over 400 companies are expected to take part in the Osaka Healthcare Pavilion, a project led by local governments and economic organizations in Osaka Prefecture, offering lucrative possibilities that I believe will win the interest of foreign companies.

**Q: Do you have a message for overseas businesspeople?**

First held in London in 1851, the Expo began as an industrial fair primarily showcasing products. It was a business opportunity. Today, trade shows have become increasingly specialized, competing to highlight cutting-edge technologies. Still, I think that attending trade fairs alone doesn't always offer a complete picture of technological advances. Science and technology do not exist in isolation; they are shaped by human experience. The Expo is unique in its ability to present both the latest innovations and visions for future human society. Through Expo 2025, we also hope to demonstrate how science and technology have supported us in economic terms. I encourage you to use this opportunity as a gateway to connect with Japanese business leaders and engage with Japanese companies. We sincerely look forward to welcoming you.

## Expo 2025: A Gateway to Connect with Japanese Companies

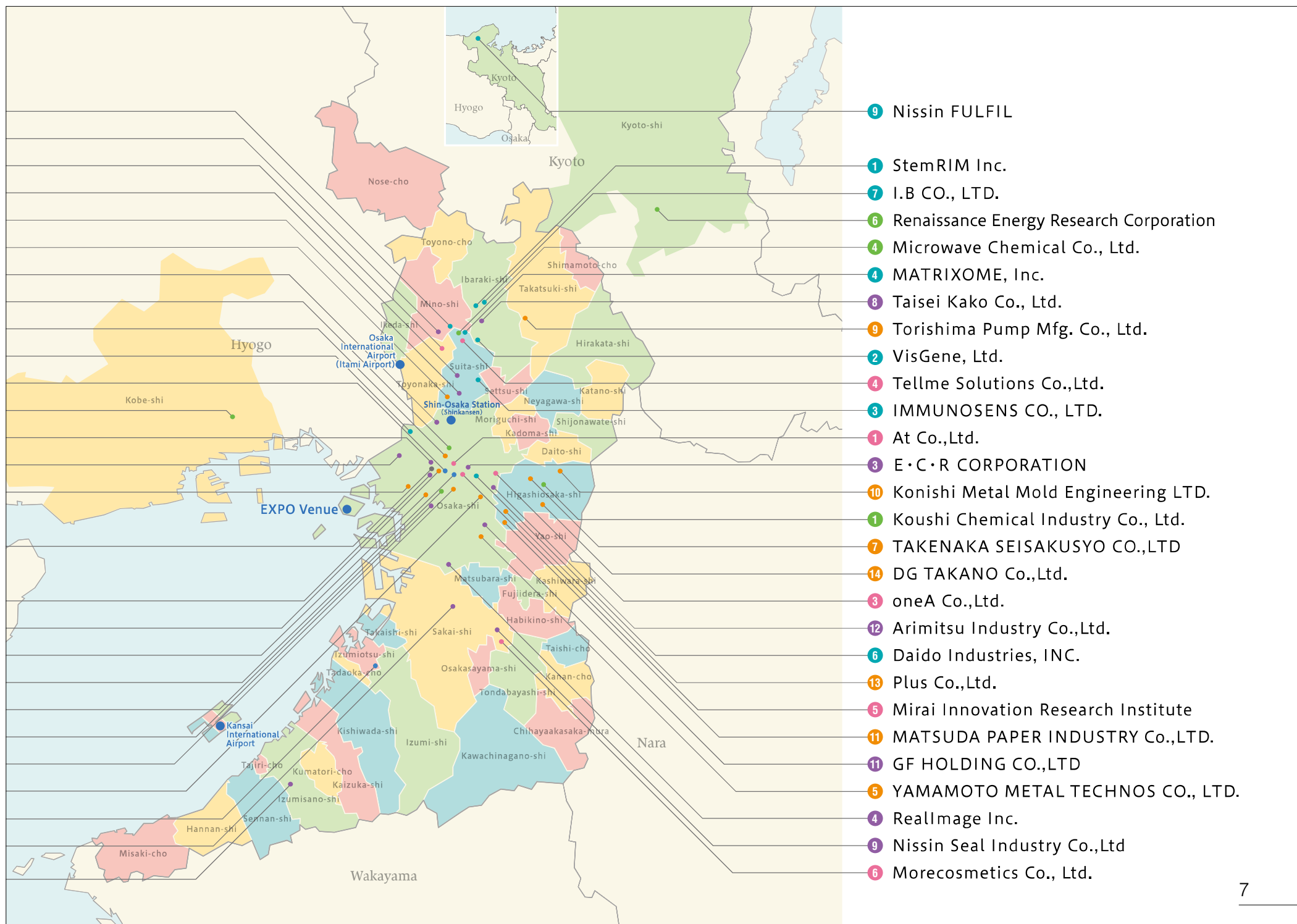


Interview with  
**ISHIGE Hiroyuki**,  
Secretary General of the Japan Association  
for the 2025 World Exposition

# List of 57 Recommended Companies in Osaka and the Kansai Region

## Map of Recommended Companies and Facilities

Osaka Heat Cool Inc.	10
KUMONOS Co., Ltd.	10
PaMeLa Inc.	7
Innoqua Inc.	2
KiwaChemical CO.,LTD	14
TOHAN DENSHI KIKI CO.,LTD.	8
Hutzper Inc.	7
LEP Inc.	5
Fujikin Incorporated	1
FUKUSHIMA GALLILEI CO. LTD	8
Chinougiyutsu Co., Ltd.	2
Photo-on-Demand Chemical Co., Ltd.	2
Komi-Hakko Corporation	1
SHIN-MEN TEKKO Co. Ltd	5
SEIKO SEIMITSU Co.,Ltd.	6
PITTAN Inc.	2
Katsujukai Memorial Clinic	5
Sakurabashi Watanabe Adbanced Healthcare Hospital	11
Tokai Spring industries, Inc.	6
Kanai Juyo Kogyo Co.,Ltd	4
TAMURA CORPORATION	12
Thinker Inc.	3
spicecube.inc	3
Osaka Metro Co., Ltd	13
REX INDUSTRIES CO.,LTD	2
Kuboi Ink Co.,Ltd	3
HCI CO.,LTD	1
Research and Development Center for Plant Factories, Osaka Metropolitan University	15
Smileyearth Corporetion	16







01



## StemRIM Inc.

### Corporate Profile

StemRIM Inc. is a biotechnology company focused on developing Regeneration-Inducing Medicine™. This innovative technology employs a unique mechanism that addresses the limitations of conventional cell therapy and regenerative medicine. It enhances tissue regeneration by boosting the supply of stem cells, which are essential for tissue regeneration capacity. The administration of Regeneration-Inducing Medicine releases mesenchymal stem cells from the bone marrow into the peripheral bloodstream, increasing the overall circulation of stem cells in the body. This process facilitates the accumulation of stem cells in damaged tissues, thereby accelerating tissue reconstruction. StemRIM is currently conducting clinical trials for a variety of diseases, including dystrophic epidermolysis bullosa and acute ischemic stroke, attracting significant attention in the medical community.

### Availability of Company Tours

Free

- Communication in English: Possible
- Communication in other languages: Not possible

Non-business Day: Saturdays, Sundays, and National Holidays

Shuhei Uematsu,  
Business Administration  
Department  
Phone: +81-6-6170-2070  
E-Mail: uematsu@stemrim.com

### Address

Saito Bio Incubator  
3rd Floor 7-7-15 Saito  
Asagi, Ibaraki,  
Osaka Prefecture  
Phone: +81-72-648-7152  
URL: <https://stemrim.com/english/>



02



## VisGene, Ltd.

### Corporate Profile

VisGene, Ltd. is a bio-venture company centered on genetic analysis technology, originating from Sanken, previously known as the Institute of Scientific and Industrial Research, at Osaka University. Guided by the principles of “miru” (see), “shiru” (learn), and “kaeru” (change), the company is dedicated to enhancing people’s lives through the visualization of microorganisms and genes. VisGene provides products and services aimed at addressing social challenges by leveraging a variety of advanced technologies. These include rapid testing technologies for infectious diseases, such as dengue and COVID-19; solutions that promote healthy longevity through the analysis of genetic disorders and bacteria linked to periodontal disease; technologies focused on analyzing bacterial flora to tackle health issues unique to women; and methods for the quick detection of alcohol in saliva and breast milk.

### Availability of Company Tours

Charged

- Communication in English: Possible
- Communication in other languages: Not possible

Non-business Day: Saturdays, Sundays, National Holidays and Year-End/New Year's Holidays

Kunihiro Kaihatsu,  
Head Office  
Research Institute  
Phone: +81-6-4864-4566  
E-Mail: kaihatsu@visgene.com

### Address

Open Innovation Building  
OI-104 Sanken, Osaka  
University  
8-1 Mihogaoka, Ibaraki,  
Osaka Prefecture  
Phone: +81-6-4864-4566  
URL: <https://visgene.com/>



03



## IMMUNOSENS CO., LTD.

### Corporate Profile

IMMUNOSENS CO., LTD. is a startup emerging from Osaka University, focused on developing a small, highly sensitive rapid point-of-care testing (POCT) device utilizing its proprietary electrochemical immunoassay method known as GLEIA. By combining immune response and electrochemistry, GLEIA enables the creation of a POCT device that is more sensitive, faster, simpler and more cost-effective than traditional immunoassay methods. The company’s vision is to allow “rapid medical-grade tests for anyone, anytime, anywhere,” fostering a world where individuals can lead long and healthy lives. The aim is the early detection of health issues and diseases across a range of contexts, from disease prevention to diagnosis and prognosis management.



### Availability of Company Tours

Free

- Communication in English: Possible
- Communication in other languages: Not possible

Non-business Day: Saturdays, Sundays, and National Holidays

Kumi Sakuhara, Sales & Marketing  
Phone: +81-6-6389-5501  
E-Mail: [k-sakuhara@immunosens.com](mailto:k-sakuhara@immunosens.com)

### Address

National Cerebral and Cardiovascular Center  
Open Innovation Lab  
30602  
6-1 Kishibe-shinmachi,  
Suita, Osaka  
Prefecture  
Phone: +81-6-6389-5501  
URL: <https://immunosens.com/en/>



## MATRIXOME, Inc.

### Corporate Profile

MATRIXOME, Inc. develops and sells cell culture substratum products based on research conducted at the Division for Matrixome Research and Application at Osaka University's Institute for Protein Research. The term "matrixome" describes the comprehensive interactions between cells and their extracellular environments, which significantly influence cellular fate in living organisms. Leveraging its research and development capabilities, the company aims to contribute to advances in regenerative medicine and microphysiological systems (MPS).



### Availability of Company Tours

Free

- Communication in English: Possible
- Communication in other languages: Not possible

Non-business Day: Saturdays, Sundays, National Holidays and Year-End/New Year's Holidays  
\*Please check in advance.

Yoichi Tsuyama,  
Sales and Marketing  
Department  
Phone: +81-6-6877-0222  
E-Mail: y-tsuyama@matrixome.co.jp

### Address

Osaka University  
Institute for Protein  
Research  
Joint Research  
Building 2F-A3  
3-2 Yamadaoka, Suita,  
Osaka Prefecture  
Phone: +81-6-6877-0222  
URL: <https://matrixome.co.jp/en/>



## Katsujukai Memorial Clinic

### Corporate Profile

Katsujukai is a medical corporation operating 15 clinics across Japan that specialize in regenerative medicine. As of August 2024, the group had handled a total of more than 36,000 cases of joint treatment. In particular, Katsujukai Memorial Clinic, in the Nakanoshima district of the city of Osaka, aims to help people live long lives in good health, as it fights aging by utilizing medical solutions relating to whole-body health based on its innovative cell therapy and state-of-the-art regenerative medicine technologies. Utilizing its excellent location at the Nakanoshima Qross medical complex, the clinic offers treatment with awareness of its role as an international medical facility. By strengthening cooperation with medical institutions and research laboratories around the world and sharing the latest technologies and research results with them, the clinic is resolved to improve the quality of its medical care and realize treatment from a global perspective.

### Availability of Company Tours

Free

- Communication in English: Possible if visitors are accompanied by an interpreter.
- Communication in other languages: Not possible

Non-business Day: None

Kazuki Obayashi  
Phone: +81-80-4450-5470  
E-Mail: obayashi@knee-joint.net  
Kimitaka Yoshino  
Phone: +81-90-4003-1300  
E-Mail: yoshino@knee-joint.net  
E-Mail: pr@knee-joint.net

### Address

Nakanoshima Qross,  
4-3-51 Nakanoshima,  
Kita Ward, Osaka,  
Osaka Prefecture  
Phone: +81-120-013-654  
URL: <https://www.katsuju-memorial-clinic/features/>



## Daido Industries, INC.

### Corporate Profile

Daido Industries, Inc. operates in the specialized field of blood transportation, employing unique techniques to ensure that blood is shaken continuously during transportation to prevent clotting at specific temperatures. The company has played a significant role in advancing blood-related services in Myanmar, Laos and Uzbekistan.



### Availability of Company Tours

Free

- Communication in English: Possible if visitors are accompanied by an interpreter.
- Communication in other languages: Burmese, Uzbek

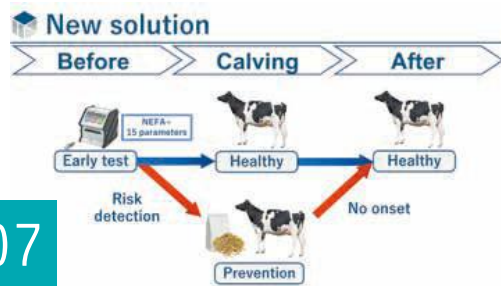
Non-business Day: Saturdays, Sundays, National Holidays, August 11th to 15th, and December 29th to January 3rd

Shinsuke Ogiri,  
Representative  
Director  
Phone: +81-6-6746-7141  
E-Mail: shinsuke\_ogiri@daido-ind.co.jp

### Address

1-4-15 Morinomiya  
Chuo, Chuo Ward,  
Osaka, Osaka  
Prefecture  
Phone: +81-6-6746-7141  
URL: <https://www.daido-ind.co.jp/en/>





07



**I.B CO., LTD.**

## Corporate Profile

After starting as a trader exporting fresh food and grain produced in Japan and importing products such as food materials from overseas, I.B now mainly produces and sells in-vitro diagnostic agents for animals. It primarily promotes livestock farming and health management for beef cattle and dairy cows, while also making efforts to realize and spread preventive and remote medical care for such animals. The firm aims to help livestock farmers and large animal veterinarians in Japan work in sustainable ways and boost their profits.

## Availability of Company Tours

Free

\*Entry into facilities including a clean room may require a fee for consumable items such as sanitary equipment.

- Communication in English: Possible if visitors are accompanied by an interpreter.
- Communication in other languages: Not possible

Non-business Day: Saturdays, Sundays, National Holidays, Summer Holidays and Year-End/New Year's Holidays

Person in charge: Ryuzaki  
E-Mail: [info@ib-holdings.com](mailto:info@ib-holdings.com)  
Inquiry form also available on company website.

## Address

Head Office: 4F Shonan Building, 1-14-10 Ginza, Chuo Ward, Tokyo  
Facility Available for Tour: Rooms 104, 106 Saito Bio Innovation Center, 7-7-20 Saito-asagi, Ibaraki, Osaka Prefecture  
URL: <https://ib-holdings.com/en/>

### Bovilab : Bovine + Laboratory



08



**FUKUSHIMA GALLILEI CO. LTD**

## Corporate Profile

FUKUSHIMA GALILEI was the first in the industry to standardize commercial refrigerators in Japan. With temperature-control technology as its core, the firm continued to support food infrastructure as supermarkets took root in postwar society and the food service industry expanded. It manufactures products including commercial refrigerators, refrigerated display cabinets, and medical, science and chemical instruments, and also handles food factory and large warehouse engineering. In addition, the firm offers maintenance services for these products, along with temperature and hygiene management systems. Looking toward 2051, the company is making efforts to achieve net-zero greenhouse gas emissions under its "Dramatic Future 2050" environmental vision.



## Availability of Company Tours

Free

- Communication in English: Possible if visitors are accompanied by an interpreter.
- Communication in other languages: Not possible

Non-business Day: Saturdays, Sundays, National Holidays, Summer Holidays and Year-End/New Year's Holidays

Taku Fukushima (MILAB)  
E-Mail: [fukushima.tak2@galilei.co.jp](mailto:fukushima.tak2@galilei.co.jp)  
Inquiry form also available on company website (<https://www.galilei.co.jp/contact/>)

## Address

2-6-18 Takejima, Nishiyodogawa Ward, Osaka, Osaka Prefecture  
URL: <https://www.galilei.co.jp/en/>



09



**Nissin FULFIL**

## Corporate Profile

Nissin FULFIL Co., Ltd. is a startup spun off from Nissin Manufacturing Co., Ltd., an automobile engine parts manufacturer. Leveraging its parent's expertise in precision component processing technologies, Nissin FULFIL develops innovative composite bone processing machinery for medical applications, allowing bone screws to be crafted from a patient's own bone during surgery. This breakthrough enables real-time processing of bone into screws in the operating room, reducing the need for multiple surgeries and promoting faster patient recovery. Through the development of medical devices, Nissin FULFIL aims to address the health care needs of people both in Japan and around the world.



## Availability of Company Tours

Free

\*Guided tours, including a briefing on business operations, are available at the Osaka Office (Medical Equipment) under certain conditions. Please note that products currently in development are not open for public viewing.

- Communication in English: Possible if visitors are accompanied by an interpreter.
- Communication in other languages: Not possible

Non-business Day: Saturdays, Sundays and National Holidays

Toshio Kozato, Administration Department  
Phone: +81-6-6308-4053  
E-Mail: [toshio-kozato@nissin-mfg.co.jp](mailto:toshio-kozato@nissin-mfg.co.jp)

## Address

Head Office: 225 Arayama, Mineyama-cho, Kyotango, Kyoto Prefecture  
Osaka Office (Medical Equipment): 3-4-12 Tsukamoto, Yodogawa Ward, Osaka, Osaka Prefecture  
Phone: +81-6-6308-4053  
URL: <https://www.sbdj.jp/en/>





## Osaka Heat Cool Inc.

### Corporate Profile

Osaka Heat Cool Inc. was established mainly by university teachers to develop health care equipment based on hot and cold sensations utilizing Peltier devices. Although it is difficult to reproduce hot and cold sensations in particular, startup was the first to develop a related device that is compact and lightweight. Transmitting hot and cold sensations simultaneously makes it possible to reproduce a stimulus similar to scratching, and the company is advancing research with the top priority on using its technology to suppress itching. The company also reproduces a menstrual pain experience using electrical stimulation and develops toys for children with disabilities.



### Availability of Company Tours

Free

- Communication in English: Possible
- Communication in other languages: Not possible

Non-business Day: Saturdays and Sundays

Kenzo Ibane, Minoh Laboratory  
E-Mail: [info@osaka-heat-cool.com](mailto:info@osaka-heat-cool.com)

### Address

4-2 COM3-Gokan,  
2-5-47 Senba-higashi,  
Minoh, Osaka  
Prefecture  
URL: <https://www.osaka-heat-cool.com/en/>



## Sakurabashi Watanabe Advanced Healthcare Hospital

### Corporate Profile

Sakurabashi Watanabe Advanced Healthcare Hospital relocated to Nakanoshima Qross, a medical complex in Osaka's Nakanoshima area, in April 2024. Equipped with the latest medical technology, the hospital continues to provide 24/7 cardiovascular tertiary emergency services. Along with advanced percutaneous coronary intervention (PCI) and arrhythmia treatment, the hospital offers open-chest surgeries, including open-heart procedures, as well as minimally invasive procedures, such as transcatheter aortic valve implantation (TAVI), in hybrid operating rooms. The facility also delivers high-precision imaging diagnostics using state-of-the-art CT and MRI technologies, enabling more accurate medical care. In addition, the hospital is actively involved in regenerative medicine, expanding its range of treatments by exploring innovations such as myocardial sheet technology.



### Availability of Company Tours

Free

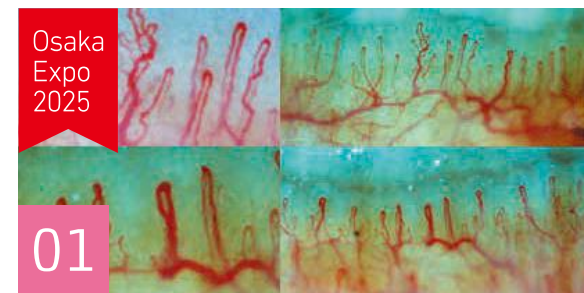
- Communication in English: Possible if visitors are accompanied by an interpreter.
- Communication in other languages: Not possible

Non-business Day: Sundays, National Holidays and the 3rd Saturday of Each Month

Tomoshige Samejima, General Affairs Section  
Phone: +81-6-6676-8215

### Address

4-3-51 Nakanoshima,  
Kita Ward, Osaka,  
Osaka Prefecture  
Phone: +81-6-6676-8215  
URL: <https://www.watanabe-hsp.or.jp/>



## At Co.,Ltd.

### Corporate Profile

At Co., Ltd. is a health technology startup originating from Osaka University, specializing in the development and manufacture of nailfold capillaroscopy (NFC). The company's proprietary capillary image analysis technology provides a system that facilitates easy health check-ups. Through joint research with government-affiliated research institute RIKEN, At Co. has patented a mechanism that integrates this system with blood tests. Additionally, in collaboration with Tohoku University, the company published research findings demonstrating that NFC is effective in detecting diabetic retinopathy. At Co. also offers a clinical testing service for health foods, serving a diverse clientele that includes universities, pharmaceutical companies, pharmacies, fitness centers and beauty salons. The company is actively recruiting local sales agencies in countries around the world.



### Availability of Company Tours

Free

\*Tours are available for the office, but not the factory.

- Communication in English: Possible
- Communication in other languages: Chinese

Non-business Day: Saturdays, Sundays and National Holidays

Dan Takeno,  
Administration  
Department  
Phone: +81-90-5468-8535  
E-Mail: [takenodan@kekkan-bijin.jp](mailto:takenodan@kekkan-bijin.jp)

### Address

Imagawa Building  
3rd Floor 2-2-17  
Imabashi, Chuo Ward,  
Osaka, Osaka  
Prefecture  
Phone: +81-50-5876-8563  
URL: <https://kekkan-bijin.jp/en/>



Osaka  
Expo  
2025

02

**PITTAN Inc.**

### Corporate Profile

The health-tech startup specializes in analyzing sweat composition to provide insights into an individual's nutritional state to help him or her make better health decisions. Under the concept of "Technical Pop," the company has implemented highly credible science-based technologies into accessible health care services. Specifically, the company employs a noninvasive method to collect extremely small amounts of sweat easily and provides analysis results in 15 minutes on the spot using a portable analyzing device that utilizes a microfluidic device technology. It aims to analyze sweat data for all human beings, thereby contributing to solving healthcare problems for mankind.



### Availability of Company Tours

Free

- Communication in English: Possible
- Communication in other languages: Not possible

Non-business Day: Saturdays, Sundays, National Holidays, Summer Holidays and Year-End/New Year's Holidays

Yoshinori Nishikawa,  
Chief Operation Officer  
Phone: +81-90-9876-2434  
E-Mail: yoshinori.nishikawa@pittan.co.jp

### Address

6-1-3 Suidosuji, Nada Ward, Kobe, Hyogo Prefecture  
URL: <https://pittan.life/>

Osaka  
Expo  
2025

03

**oneA Co.,Ltd.**

### Corporate Profile

The company has diverse operations, including metal cutting and processing, industrial LED lighting equipment, and amusement equipment. Also running a wellness business, it will showcase at Expo 2025 the "Sleeim" wearable device for snoring and apnea syndrome. When it detects snoring or apnea, Sleeim provides gentle vibratory stimulation to the wearer to induce natural breathing.



### Availability of Company Tours

Free

- Communication in English: Possible if visitors are accompanied by an interpreter.
- Communication in other languages: Not possible

Non-business Day: Saturdays, Sundays, National Holidays, Golden Week (April 29th, and May 3rd to 6th), Summer Holidays and Year-End/New Year's Holidays

Ryosuke Kawakami,  
Senior Managing Director  
Phone: +81-80-1384-1012  
E-Mail: [r-kawakami@one-a.co.jp](mailto:r-kawakami@one-a.co.jp)

### Address

3-30-20 Hanaten-higashi, Tsurumi Ward, Osaka, Osaka Prefecture  
Phone: +81-6-6962-7771  
URL: <https://www.one-a.co.jp/>

Osaka  
Expo  
2025

04

**Tellme Solutions Co.,Ltd.**

### Corporate Profile

Founded in 1930, the company is a time-honored beauty salon operator. As part of efforts to retain customers, it has conducted research and development for "disease risk assessment using hair as a biological sample." Unlike body fluids such as blood and urine, "collecting, transporting and storing" is easy for hair, while power sources or devices are not necessary for hair sample handling. The technique can thus be accessed even in areas or countries where medical services are not widely available, such as remote islands or mountainous locations, and is therefore unique. Evidence from the firm's hair analysis will be announced at the IDF World Diabetes Congress 2025 in Bangkok in April. The company has already conducted demonstration tests in municipalities in Osaka Prefecture, confirming that the technique is effective for making people who are indifferent to health in particular aware of the need of health promotion. The service is expected to make contributions to the third U.N. sustainable development goal of "good health and well-being."

### Availability of Company Tours

Free

\* Reservations are required.

- Communication in English: Possible
- Communication in other languages: Not possible

Non-business Day: Mondays and Tuesdays

Kohei Yamamoto,  
Hair Analysis Business Department  
Phone: +81-90-3713-2924  
E-Mail: [info-h@senri.co.jp](mailto:info-h@senri.co.jp)

### Address

4-2-6 Furuedai, Suita, Osaka Prefecture  
Phone: +81-6-6872-4466  
URL: <https://glymap.senri.co.jp/>







## Mirai Innovation Research Institute

### Corporate Profile

The company focuses on research and development for advanced technologies and the supply of educational programs. Its R&D activities cover a wide range of fields, including robotics, neurotechnology, AI, blockchain, big data analysis, VR/AR, bioprinting, nanotechnology, and space technology. At Expo 2025, the company plans to provide, using its VR technology, a relaxing space in line with the cognitive state recognized from brain waves.

### Availability of Company Tours

Free

- Communication in English: Possible
- Communication in other languages: Spanish

Non-business Day: Saturdays and Sundays

Christian Penalzoza, Management Department  
Phone: +81-6-6616-7897  
E-Mail: cpenalzoza@mirai-innovation-lab.com

### Address

Head office: EDGE Honmachi Building, 2-3-12 Minamihonmachi, Chuo Ward, Osaka, Osaka Prefecture  
Laboratory: M-1-3, 6F, ITM Section, ATC Building, 2-1-10 Nankokita, Suminoe Ward, Osaka, Osaka Prefecture  
Phone(Laboratory): +81-6-6616-9899  
URL: <https://www.mirai-innovation-lab.com/>



Osaka Expo 2025

06



## Morecosmetics Co., Ltd.

### Corporate Profile

Haircare and skincare cosmetics maker Morecosmetics Co., Ltd. develops its products based on scientific evidence, giving the highest priority to minimizing burdens on the skin. It sells products via beauty salons and medical institutions so that people with skin issues and damaged hair can use them without worry. The company's sophisticated research and development capabilities have been highly evaluated. One of the firm's research papers has been published in a journal of the American Oil Chemists' Society, while it has won the "Editor's Award" from the Japanese Cosmetic Science Society. The company plans to offer its Badens Scalp Shampoo as a hand-washing detergent at Expo 2025 and exhibit its products at the Osaka Healthcare Pavilion at the event.



### Availability of Company Tours

Free

- Communication in English: Possible if visitors are accompanied by an interpreter.
- Communication in other languages: Not possible

Non-business Day: Saturdays, Sundays, National Holidays, Summer Holidays and Year-End/New Year's Holidays

Kazuya Kameda, Marketing Department  
Phone: +81-80-5789-5934  
E-Mail: kameda-k@morecosmetics.co.jp

### Address

4-12-15 Mokuza-dori, Mihara Ward, Sakai, Osaka Prefecture  
Phone: +81-72-363-5151  
URL: <https://www.morecosmetics.co.jp/>



## PaMeLa Inc.

### Corporate Profile

A startup from Osaka University, PaMeLa Inc. develops AI that quantifies pain levels. At present, there is no objective way to assess pain, so medical institutions have no choice for treatments but to rely on subjective evaluation, such as self-reporting from patients. As a result, pain cannot be evaluated correctly in clinical settings, with social issues emerging such as pain management ending in failure and pain becoming chronic. Based on large amounts of clinical data, the company is developing AI that quantifies pain in real time and with high accuracy on a scale of zero to 100. The firm has already completed exploratory clinical trials on the technology with a university hospital in Japan and is now in the phase of confirmatory clinical trials. In future, with the market introduction of the technology, the company aims to help solve social issues associated with pain.



### Availability of Company Tours

Free

- Communication in English: Possible
- Communication in other languages: Not possible

Non-business Day: Saturdays, Sundays, National Holidays and Several Designated Holidays

Yuka Nakahara, Management Department  
Phone: +81-6-6836-5373  
E-Mail: nakahara@pain-ml.com

### Address

6F Hankyu Senri Chuo Building, 1-4-1 Shinsenri-higashimachi, Toyonaka, Osaka Prefecture  
URL: <https://pain-ml.com/en/>



Osaka  
Expo  
2025

01

**Koushi Chemical Industry Co., Ltd.**  
(A CDC-supporting company)

### Corporate Profile

Koushi Chemical Industry transforms discarded scallop shells into eco-friendly “SHELLMET” helmets, utilizing ecoplastics derived from the shells. This innovation reduces carbon dioxide (CO<sub>2</sub>) emissions by approximately 36% compared with traditional materials. The helmet’s design incorporates a unique rib structure inspired by scallop anatomy, resulting in about 33% greater strength than conventional helmets. Damaged Hotamet helmets are also recyclable, either into new helmets or for use as building materials. By upcycling seashells, which previously contributed to around 40,000 tons of marine waste annually, the company is reducing industrial waste and helping preserve the seaside scenery of Sarufutsu, a village in Hokkaido famous for its large scallop harvests.

### Availability of Company Tours

Free

- Communication in English: Possible
- Communication in other languages: Not possible

Non-business Day: Saturdays, Sundays, National Holidays  
\*Tours are available on certain Saturdays.

Tetsuya Nambara,  
Planning and Development Department  
Phone: +81-50-3695-1808  
E-Mail: nambara.tetsuya@koushi-chem.co.jp

### Address

Head office: 1-12-20 Higashi-Obase, Higashinari Ward, Osaka, Osaka Prefecture  
Manufacturing base: 2-5-14 Hishie, Higashiosaka, Osaka Prefecture  
Phone: +81-72-962-6012  
URL: <https://koushi-chem.co.jp/en/>

Osaka  
Expo  
2025

02

**Photo-on-Demand Chemical Co., Ltd.**

### Corporate Profile

Photo-on-Demand Chemical Co., Ltd. is a startup that uses methane--a main component of biogas generated from sewage, livestock manure and garbage--chlorine generated from the electrolysis of seawater, and oxygen contained in the air as raw materials to produce active pharmaceutical ingredients and intermediates using light. Methane is a greenhouse gas with a global warming potential approximately 25 times greater than that of carbon dioxide, and there is a strong need to reduce emissions of it into the atmosphere. The company manufactures and sells high-value-added chemical products using biogas as a raw material, employing its patented manufacturing method, which is safe, inexpensive, simple, and environmentally friendly. The startup aims to contribute to U.N. sustainable development goals by forming a hub for manufacturing using light under an industry-government-academic-finance consortium.



### Availability of Company Tours

Free

\*The requirements for the company tour include that participants must be from countries and regions on Japan’s “white” list of trading partners with preferential status and that they sign a nondisclosure agreement.

- Communication in English: Possible
- Communication in other languages: Not possible

Non-business Day: Saturdays, Sundays and National Holidays

Business Dept.  
Ayako Matsune  
Phone: +81-78-803-5696  
E-Mail: [info@photo-od-chem.co.jp](mailto:info@photo-od-chem.co.jp)

### Address

Kobe University,  
Graduate School of Science A228 1-1 Rokkodai-cho, Nada Ward, Kobe, Hyogo Prefecture  
Phone: +81-78-803-5696  
URL: <https://photo-od-chem.com>

Osaka  
Expo  
2025

03

**spicecube.inc**

### Corporate Profile

Indoor agriculture, which does not require farmland, can solve many challenges, including low food self-sufficiency caused by the declining agricultural population, and spicecube.inc’s business model is not just building plant factories but also support the distribution of related products. The company can help farmers distribute products at their desired prices, which is most important for agricultural businesses. It is developing a system that allows indoor vegetables to absorb carbon dioxide emitted from offices and homes, while believing that indoor farming can also contribute to reducing carbon dioxide emissions by using LED lighting and cultivation technology that circulates nutrient solution.



### Availability of Company Tours

Charged

- Communication in English: Possible if visitors are accompanied by an interpreter.
- Communication in other languages: Not possible

Non-business Day: Sundays

Tsubasa Sugai,  
Representative Director  
Phone: +81-90-3627-2284  
E-Mail: [contact@spicecube.biz](mailto:contact@spicecube.biz)

### Address

1-1-30 Sakuragawa, Naniwa Ward, Osaka, Osaka Prefecture  
Phone: +81-6-7176-8705  
URL: <https://www.spicecube.biz/>



04



## Microwave Chemical Co., Ltd.

### Corporate Profile

Microwave Chemical Co., Ltd. has developed a technological platform for the use of microwaves. It develops and provides technologies to improve energy efficiency and reduce carbon dioxide emissions through microwave processes in a range of industrial fields including chemicals, steel, and metal smelting. At present, joint development projects are underway with more than 60 Japanese and foreign companies. Microwave Chemical is working to achieve carbon neutrality in the industrial domain through microwaves.



### Availability of Company Tours

Free

- Communication in English: Possible
- Communication in other languages: Not possible

Non-business Day: Saturdays, Sundays, and National Holidays

Yuri Katoda, Business Development Dept.  
Phone: +81-80-7010-8708  
E-Mail: [info@mwcc.jp](mailto:info@mwcc.jp)

### Address

Photonics Center 5F,  
2-1 Yamadaoka,  
Suita, Osaka  
Prefecture  
URL: <https://mwcc.jp/en/>



05



## LEP Inc.

### Corporate Profile

Inspired by luminous organisms in nature, such as fireflies and mushrooms, LEP Inc. is conducting research and development on plants that have "bright luminescent proteins." We aim to develop "light emitting flowers" and "light emitting ornamental plants" for use as interior accessories, as well as "light emitting roadside trees" that can replace street lights. If realized, such "light emitting plants" will absorb CO<sub>2</sub> through photosynthesis during the daytime, and at night light rooms and streets, like conventional illumination but without the use of electricity. They could be the ultimate eco-friendly lighting and therefore a critical key to resolving global warming and energy-related issues.



### Availability of Company Tours

Free

- Communication in English: Possible
- Communication in other languages: Not possible

Non-business Day: Saturdays, Sundays, and National Holidays

Taku Demura,  
Executive Officer  
Phone: +81-80-1172-9882  
E-Mail: [taku.demura@start-lep.jp](mailto:taku.demura@start-lep.jp)

### Address

267 1-1-3 Umeda,  
Kita Ward, Osaka,  
Osaka Prefecture  
URL: <https://www.start-lep.jp/en/home-2/>



06



## Renaissance Energy Research Corporation

### Corporate Profile

Renaissance Energy Research was established with the aim of developing businesses across a wide range of areas using catalyst-related technologies developed by founder Osamu Okada during his previous job, at Osaka Gas Co. Having obtaining rights from the earlier employer to manufacture, sell, and license related patents, Renaissance Energy Research sells catalysts for hydrogen production to chemical and oil companies in Japan and abroad. It also promotes applications of a carbon-dioxide selective permeable membrane developed in cooperation with Kobe University for carbon-dioxide separation and recovery. The membrane system developed by the company makes it possible to improve the efficiency, reduce the size and lower the cost of hydrogen stations. The company aims to promote application of the system to various fields, such as power generation exhaust gas, biogas and DAC(Direct Air Capture). Meanwhile, it has successfully developed a carbon-dioxide methanation catalyst with excellent low-temperature activity. It plans to advance the development of recycling technology for carbon dioxide recovered by membrane separation to contribute to the realization of a decarbonized society.

### Availability of Company Tours

Free

- Communication in English: Possible
- Communication in other languages: Not possible

Non-business Day: Saturdays, Sundays, National Holidays and Year-End/New Year's Holidays

Kunihiro Nakato,  
General Manager,  
Kyoto Development Center, Technical Headquarters  
Phone: +81-75-634-9817, +81-80-1510-1908  
E-mail: [nakato@r-energy.com](mailto:nakato@r-energy.com)

### Address

105 Jibu-cho,  
Fushimi-ku, Kyoto-shi,  
Kyoto Prefecture  
Advanced Chemical Technology Center in Kyoto #102  
URL: <https://www.r-energy.com/>



Carbon Neutrality





Osaka  
Expo  
2025

01



## Fujikin Incorporated

### Corporate Profile

Fujikin Incorporated engages primarily in the manufacture of fluid control systems, with focus on specialized valve equipment used across various industries. In particular, the company holds a leading market share globally for valves that regulate gas flows in semiconductor manufacturing equipment, according to its internal research. Fujikin is also actively developing products in the hydrogen sector, recognized as a promising next-generation energy. Fujikin Carp Group has a significant international presence, with operations in Japan, the United States, Ireland, Germany, South Korea, Vietnam, China, Taiwan, and Singapore. In addition, the company is committed to sustainability initiatives, including the farming of sturgeon, a species classified as endangered.



### Availability of Company Tours

Free

- Communication in English: Possible if visitors are accompanied by an interpreter.
- Communication in other languages: Korean

Non-business Day: Saturdays, Sundays, National Holidays, Golden Week (April 29th, and May 3rd to 6th), Summer Holidays and Year-End/New year's Holidays

Hideaki Yano,  
Administration  
Department at Osaka  
Factory - Kashiwara  
Phone: +81-72-977-4661  
E-Mail: h-yano@fujikin.co.jp

### Address

Kitahankyu Building  
1-4-8 Shibata, Kita  
Ward, Osaka, Osaka  
Prefecture  
Phone: +81-6-6372-7141  
URL: <https://www.fujikin.co.jp/en/>

Osaka  
Expo  
2025

02



## REX INDUSTRIES CO.,LTD

### Corporate Profile

REX INDUSTRIES CO., LTD. works to contribute to the world through its innovative piping technologies that support vital infrastructure, exporting its products to approximately 80 countries. The company has established production or sales bases in the United States, China, Thailand and India. In addition to its traditional pipe-threading technologies, REX's product lineup features roll-threading machinery tailored for the Japanese market and fusion equipment essential for manufacturing polyethylene pipes, known for their earthquake resistance. Furthermore, the company's water treatment and conservation systems are utilized in both domestic water applications and aquaculture, addressing a variety of challenges. Also, REX's horse and amenity business division manufactures all-weather horse sand and sells feed, positioning the company as the only provider of such products in Japan.



### Availability of Company Tours

Free

- Communication in English: Possible
- Communication in other languages: Not possible

Non-business Day: Saturdays, Sundays, National Holidays, August 1st for our company anniversary, Summer Holidays and Year-End/New year's Holidays

Jun/Atsushi Hongo,  
General Affairs  
Department  
Phone: +81-72-961-9870  
E-Mail: hongo@rexind.co.jp

### Address

1-4-5  
Nishishinsaibashi,  
Chuo Ward, Osaka,  
Osaka Prefecture  
Phone: +81-120-475-476  
URL: <https://www.rexind.co.jp/e/>

Osaka  
Expo  
2025

03



## Kuboi Ink Co.,Ltd

### Corporate Profile

Kuboi Ink Co., Ltd. is a leading manufacturer of ultraviolet curable inks and functional printing inks, ranked as the second-largest producer of seal label printing inks in Japan, with an 11% market share. The company is renowned for its advanced anti-counterfeit technologies, boasting a remarkable 99% market share in anti-counterfeit inks specifically designed to prevent color copies of residence certificates and seal registration certificates in Japan. In addition, Kuboi Ink produces inks for electronic components and engages in the printing of fragrances. The company has earned recognition from the Japanese government as one of the "Companies Driving Regional Growth" and is listed among 300 promising small and medium-sized enterprises. Kuboi Ink is dedicated to upholding high standards in quality, environmental sustainability and personal information protection, earning ISO9001, ISO14001, and PrivacyMark certifications.

### Availability of Company Tours

Free

- Communication in English: Possible if visitors are accompanied by an interpreter.
- Communication in other languages: Not possible

Non-business Day: Saturdays, Sundays and National Holidays

Yuichiro Inoue, Sales  
and Marketing  
Department  
Phone: +81-6-6973-6211  
E-Mail: [inoue@kuboi.co.jp](mailto:inoue@kuboi.co.jp)

### Address

11-23 Higashi-  
Imazato 2-chome,  
Higashinari-ku,  
Osaka Prefecture  
Phone: +81-6-6973-6211  
URL: <https://www.kuboi.co.jp/en/>





## Kanai Juyo Kogyo Co.,Ltd

### Corporate Profile

Founded in 1894, Kanai Juyo Kogyo Co., Ltd. is a B2B manufacturer specializing in metals and chemicals, with a rich history in the Kansai region of western Japan. The company operates two main divisions: its textile machinery business, based in Itami, which processes metal wires and is recognized as domestic market leader; and its non-woven fabric operations in Takarazuka, one of Japan's four pioneering businesses in this field. With over 80% of its sales generated from international markets, the textile machinery division boasts strong global brand recognition and power. The non-woven fabric division produces materials used in various applications, including filters for air conditioning systems in buildings, ceiling materials for automobiles, and medical devices. The company places a high priority on human resource recruitment and development, adopting a unique approach that emphasizes innovative recruitment practices rather than traditional methods.



### Availability of Company Tours

Charged

\*Please inquire about details.

- Communication in English: Possible if visitors are accompanied by an interpreter.
- Communication in other languages: Not possible

Non-business Day: Saturdays, Sundays, National Holidays. Please check our calendar for details.

Shinya Ishikura,  
Suzuka Kakiyama,  
General Affairs Group  
Phone: +81-6-6346-1471  
E-Mail: kouhou@kanaijuyo.co.jp

### Address

1-2-9 Dojima, Kita Ward, Osaka Prefecture  
Phone: +81-6-6346-1471  
URL: <https://www.kanaijuyo.co.jp/english/>



## YAMAMOTO METAL TECHNOS CO., LTD.

### Corporate Profile

With advanced processing operations and on-machine measurement technologies as core strengths, YAMAMOTO METAL TECHNOS CO., LTD. is engaged in four business areas: processing, manufacturing solutions, robot system integration, and engineer education support. With a corporate goal of "innovation in machining," the mission of the company is to contribute to solving social challenges such as labor shortages by fusing manufacturing and machining with currently evolving technologies. In recent years, the company has expanded into Vietnam. For the future, with a view to expanding its services globally, it is focusing on actively developing ASEAN-based sales channels.



### Availability of Company Tours

Free

- Communication in English: Possible if visitors are accompanied by an interpreter.
- Communication in other languages: Vietnamese

Non-business Day: Saturdays, Sundays, National Holidays. Open on some Saturdays per month.

Natsumi Nagatomo,  
Public Relations Group  
Phone: +81-6-6704-6561  
E-Mail: hayakawa@yama-kin.co.jp

### Address

2-4-7 Setoguchi, Hirano Ward, Osaka, Osaka Prefecture  
Phone: +81-6-6704-1800  
URL: <https://yama-kin.co.jp/en>



## SEIKO SEIMITSU Co.,Ltd.

### Corporate Profile

SEIKO SEIMITSU Co., Ltd. is a precision parts processing manufacturer that specializes in multi-item, small-lot production and ultra-short delivery times. It processes metal parts for a wide variety of products, including automobiles, semiconductors, medical equipment, and industrial machinery. While specializing in processing palm-sized parts, it is particularly strong in manufacturing prototypes and one-of-a-kind parts. On the second floor of its headquarters plant, the company has an open innovation space called "Garage Minato," which brings together nearby small factories, researchers, and technology startups to develop new technologies and products.



### Availability of Company Tours

Free

- Communication in English: Possible if visitors are accompanied by an interpreter.
- Communication in other languages: Vietnamese, Chinese

Non-business Day: Sundays and National Holidays. Open on some Saturdays, depending on the company calendar.

Akihisa Takasugi,  
Sales Department  
Phone: +81-6-6586-5771  
E-Mail: a.takasugi@seikouseimitsu.com

### Address

1-4-35 Namiyoko, Minato Ward, Osaka, Osaka Prefecture  
Phone: +81-6-6586-5771  
URL: <https://www.seikouseimitsu.com/>



Cutting-Edge Craftsmanship

Osaka  
Expo  
2025

07

**TAKENAKA SEISAKUSHO CO.,LTD**

### Corporate Profile

Using proprietary technologies, TAKENAKA SEISAKUSHO CO., LTD. provides high-quality products, including bolts and nuts made of specialty steel for huge structures such as bridges, social infrastructure such as expressways, and oil and nuclear power plants that require high durability and safety. The company's proprietary surface treatment technology, TAKECOAT-1000, provides high antirust and anticorrosion performance and durability even in harsh environments, as well as high lubrication performance. The company also offers TAKECOAT-CERAMIC1, which prevents seizing through high-temperature oxidation, and NANOTECH, a carbon nanotube composite high-strength and high-toughness coating film.

### Availability of Company Tours

Free

- Communication in English: Possible
- Communication in other languages: Not possible

Non-business Day: Saturdays, Sundays, National Holidays. A tour may not be available on certain weekdays.

Akito Kashiwara, General Affairs  
Phone: +81-6-6789-1555  
E-Mail: kashiwara@takenaka-mfg.co.jp

### Address

6-4-35 Hishie, Higashiosaka, Osaka Prefecture  
Phone: +81-6-6789-1555  
URL: <https://www.takenaka-mfg.co.jp/en/>

Osaka  
Expo  
2025

08

**TOHAN DENSHI KIKI CO.,LTD.**

### Corporate Profile

Since its founding in 1984, TOHAN DENSHI KIKI CO., LTD. has created a wide variety of products based on its core motion control technology to meet customer demands, including printed circuit boards, controllers, and embedded devices. It has so far developed 1,700 models for 22 industries, including semiconductors and automobiles. Recently, the company has launched an IoT-related business that focuses on remote monitoring and has also worked on well-being products and services that make people feel more energetic and happy. At Expo 2025, the company plans to exhibit clothing that monitors people's vital information and automatically adjusts to the optimum temperature.



### Availability of Company Tours

Charged

- Communication in English: Possible if visitors are accompanied by an interpreter.
- Communication in other languages: Not possible

Non-business Day: Saturdays, Sundays and National Holidays

Asuka Shutou, Department: administration  
Phone: +81-6-6337-7100  
E-Mail: asuka.shutou@tohan-denshi.co.jp  
(cc:hitoshi.nagano@tohan-denshi.co.jp)

### Address

29-1 Enoki-cho, Suita, Osaka Prefecture  
Phone: +81-6-6337-7100  
URL: <https://tohan-denshi.co.jp/>

Osaka  
Expo  
2025

09

**Torishima Pump Mfg. Co., Ltd.**

### Corporate Profile

Torishima Pump Mfg. Co., Ltd. is a specialized pump manufacturer based in Osaka Prefecture and founded in 1919. It has strengths in pumps for water supply and sewerage facilities, power plants, and seawater desalination plants. The Japanese Ministry of Economy, Trade and Industry has selected Torishima Pump as one of its Global Niche Top Companies. In recent years, when heavy rains have caused extensive damage across Japan, the company has helped to making life safe and secure through its disaster prevention and mitigation technologies. It also contributes to reducing power consumption and carbon dioxide emissions by improving pump efficiency. In addition, it has been developing pumps for next-generation energy, successfully testing the world's first large-flow liquefied hydrogen pump.

### Availability of Company Tours

Free

- Communication in English: Possible if visitors are accompanied by an interpreter.
- Communication in other languages: Not possible

Non-business Day: Saturdays, Sundays, National Holidays, Golden Week (April 29th, and May 3rd to 6th) and Summer Holidays (about 1 week).

Jugja(Masako)An, Corporate Branding Section  
Phone: +81-72-695-0551  
E-Mail: m-an@torishima.co.jp

### Address

1-1-8 Miyata-cho, Takatsuki, Osaka Prefecture  
Phone: +81-72-695-0551  
URL: <https://www.torishima.co.jp/en/>







10



## Konishi Metal Mold Engineering LTD.

### Corporate Profile

Konishi Metal Mold Engineering LTD.'s ultrasonic flaw detection system allows press machines and molds to constantly monitor products during processing. The system uses AI technology to detect minute defects at the initial stage, minimizing the waste rate to achieve long-term cost reductions and sustainable production. Thanks to the rich mold data the company has accumulated since its founding in 1968, it can carry out prompt and high-precision repairs and remodeling without drawings. In addition, its support services focused on the early identification and resolution of defect causes can help customers greatly improve production efficiency.



### Availability of Company Tours

Free

- Communication in English: Possible if visitors are accompanied by an interpreter.
- Communication in other languages: Not possible

Non-business Day: Saturdays, Sundays, and National Holidays

Haruto Konishi,  
Research and Development  
Department  
Phone: +81-72-981-3477  
E-Mail: k.haruto@konishi-kanagata.co.jp

### Address

6-4-47 Nakaishikiri-cho, Higashiosaka, Osaka Prefecture  
Phone: +81-72-981-3477  
URL: <https://www.konishi-kanagata.co.jp/?pl=true>



11



## MATSUDA PAPER INDUSTRY Co.,LTD.

### Corporate Profile

MATSUDA PAPER INDUSTRY Co., LTD., based in Higashiosaka, develops and sells cardboard furniture, following a massive earthquake and tsunami that struck northeastern Japan in 2011. Chests of drawers and children's desks that are made of cardboard are light and inexpensive, and they are popular because they can be replaced at low cost if children doodle on them. In cooperation with Kindai University, the company developed a well-designed cardboard stool. In recent years, it has been selling environment-friendly interior products such as beds and cafe tables.



### Availability of Company Tours

Free for factory-only tours.  
A fee applies for attending workshops.

- Communication in English: Possible if visitors are accompanied by an interpreter.
- Communication in other languages: Not possible

Non-business Day: Saturdays, Sundays, and National Holidays

Nahoko Tatsumi,  
Sales Department  
Phone: +81-6-6728-8501  
E-Mail: tatsumi@matsuda-siko.com

### Address

5-14-24 Kizuri, Higashiosaka, Osaka Prefecture  
Phone: +81-6-6728-8501  
URL: <https://matsuda-siko.com/>



12



## TAMURA CORPORATION

### Corporate Profile

TAMURA CORPORATION specializes in iron processing, producing a wide range of parts for bridges and roads at its small factory. As part of its innovative "TEPPEN Project," the company develops and markets original products crafted from factory scrap materials, including interior items such as S-shaped hooks and clips. Beyond manufacturing, the company actively participates in collaborative projects to create experiences and build for the future, working with major companies or through industry-academia-government partnerships.



### Availability of Company Tours

Charged

- Communication in English: Possible if visitors are accompanied by an interpreter.
- Communication in other languages: Not possible

Non-business Day: Saturdays, Sundays, and National Holidays

Yukiteru Tamura,  
Managing Director  
Phone: +81-90-5670-4762  
E-Mail: yukiteru.tamura@steel-tamura.com

### Address

2-17-28 Kujominami, Nishi Ward, Osaka, Osaka Prefecture  
Phone: +81-6-6583-1562  
URL: <https://steel-tamura.com/>



Cutting-Edge Craftsmanship





**Plus Co.,Ltd.**

## Corporate Profile

The main line of business for Plus Co., Ltd. is the production and sale of its signature “turalist” toothbrushes, which are sustainable, nondisposable and entirely plastic-free. The eco-friendly toothbrushes are manufactured in Japan with responsibly sourced natural materials. The handles are crafted from beech wood chips, a byproduct of chair manufacturing, while the bristles are made primarily from horsehair, sourced from animals raised for food.

**Key Milestones:** Oct. 2021: Successfully reached its crowdfunding target.  
Feb. 2023: Flagship product certified as a Made-in-Osaka brand.  
Oct. 2023: Flagship product listed among the recommended local products for the Group of Seven (G-7) Trade Ministers’ Meeting in Osaka and Sakai.  
Dec. 2023: Flagship product received Special Award from the Ministry of the Environment’s Good Life Award Executive Committee.

## Availability of Company Tours

Free

- Communication in English: Possible if visitors are accompanied by an interpreter.
- Communication in other languages: Not possible

**Non-business Day:** Saturdays, Sundays, and National Holidays  
**\*Factory tours are available on Wednesdays, Thursdays, and Fridays from 10:00 to 15:00.**

Katsu Muranaka, Public Relations Department  
Phone: +81-90-3054-7210  
E-Mail: [muranaka.katsu@gmail.com](mailto:muranaka.katsu@gmail.com)

## Address

2-16-16 Kizuri,  
Higashiosaka, Osaka  
Prefecture  
Phone: +81-6-4309-5585  
URL: <https://nhes8739.com/>



**DG TAKANO Co.,Ltd.**

## Corporate Profile

With a mission to “save the world’s water,” DG TAKANO Co., Ltd. developed in 2009 the Bubble90 nozzle for industrial use, which can reduce water consumption by up to 95%. In 2023, the company introduced “meliordesign,” the world’s first\* tableware that can remove dirt with water alone, utilizing advanced surface modification technology powered by nanotechnology. These innovations demonstrate the company’s commitment to solving global water shortages. Currently, the company is working to develop new infrastructure that addresses not only water scarcity but also food shortages and energy-related issues through integrated solutions.

(\*The “world’s first” claim is based on DG TAKANO’s research, with a patent pending as of June 2023.)



## Availability of Company Tours

Free

\*A fee may apply to visitors depending on the scale and content of the tour.

- Communication in English: Possible
- Communication in other languages: Not possible

**Non-business Day:** Sundays  
**\*A tour may not be available on certain Saturdays.**

Ami Tsuzuki, President Office, Public Relations Department  
Phone: +81-70-1546-6677  
E-Mail: [tsuzuki@dgtakan.co.jp](mailto:tsuzuki@dgtakan.co.jp)

## Address

Tokyo Head Office:  
Seihou Building 7th Floor  
2-21-3 Higashiueno,  
Taito Ward, Tokyo  
Osaka Branch Office,  
Factory: 4-6-24  
Wakaehigashi-machi,  
Higashiosaka, Osaka  
Prefecture  
Phone: +81-6-7492-3466  
URL: <https://dgtakano.co.jp/>



**HCI CO.,LTD**

## Corporate Profile

HCI CO., LTD. specializes in robotics and AI technologies, providing robotic systems and AI solutions across various industrial sectors. The company’s strength lies in its ability to offer comprehensive one-stop services, from the development of robots and AI robotic systems to delivery and operational support, leveraging advanced technological capabilities honed over many years. Notably, HCI operates a unique employee cafeteria that is fully managed by robots and AI, the first of its kind in the world. This innovative facility not only showcases the company’s technological prowess but also makes important contributions to the local community.



## Availability of Company Tours

Charged  
(Lunch included)

- Communication in English: Possible if visitors are accompanied by an interpreter.
- Communication in other languages: Not possible

**Non-business Day:** Mondays, Saturdays, Sundays, National Holidays and Other Designated Holidays

Chisato Okamoto,  
Administration  
Headquarters  
Phone: +81-725-90-6206  
E-Mail: [okamoto\\_chisato@hci-ltd.co.jp](mailto:okamoto_chisato@hci-ltd.co.jp)

## Address

3-14-10  
Higashitoyonaka-cho,  
Izumitsu,  
Osaka Prefecture  
Phone: +81-725-90-6206  
URL: <https://www.hci-ltd.co.jp/>

\* All times are indicated in Japan Standard Time.



## CHINOUGIJUTSU CO.,LTD.

### Corporate Profile

Chinougijutsu Co., Ltd. is working to solve various social challenges by making full use of AI and robot technologies. It is developing robots for a range of purposes, including construction, firefighting, warehouse transportation and plant inspection, as well as automatic driving using generated AI, detection sensors for aging facilities, and AI for recognizing human actions. In particular, the company's strength is its ability to combine AI and robot technology to address dangerous and harsh working conditions and labor shortages at construction sites, fire sites, factories and warehouses, as well as on ships. Top-level universities and companies around the world are paying attention to the company's advanced technological capabilities.



### Availability of Company Tours

Free

- Communication in English: Possible
- Communication in other languages: Not possible

Non-business Day: Saturdays, Sundays, and National Holidays

CEO Ryoji Otsu  
Phone: +81-6-6362-1008  
E-Mail: [otsu@chinou.co.jp](mailto:otsu@chinou.co.jp)

### Address

Dojima Building  
#414, 2-6-8 Nishitenma, Kita Ward, Osaka, Osaka Prefecture  
Phone: +81-6-6362-1008  
URL: <https://www.chinou.co.jp/en/company/>



## Thinker Inc.

### Corporate Profile

Thinker, a startup from Osaka University, develops and sells pre-touch sensors, a next-generation product that detects the distance and inclination of an object to be grasped just before touching it. By using such a sensor, the fingertips of a robot hand are able to "explore and grasp" an object as if they are moving it. The company is working to spread the use of robot hands, previously limited to some big companies because of the need for large-scale facilities.



### Availability of Company Tours

Free

- \*Reservations are required.

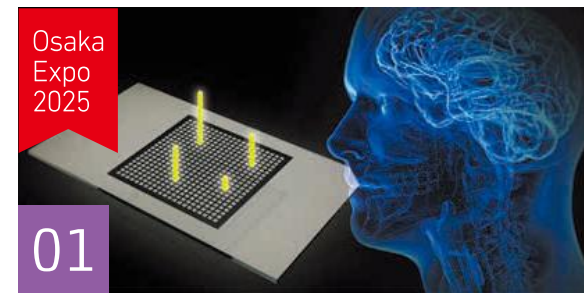
- Communication in English: Possible
- Communication in other languages: Not possible

Non-business Day: Saturdays, Sundays, and National Holidays

Kaori Tanabe, Sales and Marketing Department  
Phone: +81-6-4980-0465  
E-Mail: [sales@thinker-robotics.co.jp](mailto:sales@thinker-robotics.co.jp)

### Address

Osaka Center Building  
6F #188, 4-1-3 Kyutaro-machi, Chuo Ward, Osaka, Osaka Prefecture  
A company tour is offered at the following location:  
Development Base:  
6-5-2, Sakyo, Nara, Nara Prefecture  
URL: <https://www.thinker-robotics.co.jp/en/>



## Komi-Hakko Corporation

### Corporate Profile

Komi-Hakko Corporation, a start-up company that originated in Osaka University, has developed and implemented a groundbreaking technology for quantifying odors. The technology overcomes the lack of defined odor quantification. The company provides a wide range of solutions for accurate odor analysis and recording. Komi-Hakko also has built an odor database which is used to reconstruct odors for transferring smells (called smell codes). This technology allows delivery of scents worldwide as well as in virtual spaces. In addition, the company built foul odor database, which is leveraging for deodorant development.



### Availability of Company Tours

Free

- \*Non-disclosure agreement required.

- Communication in English: Possible if visitors are accompanied by an interpreter.
- Communication in other languages: Not possible

Non-business Day: Saturdays, Sundays, National Holidays, Golden Week (April 29th, and May 3rd to 6th), Summer Holidays and Year-End/New Year's Holidays

Atsuko Mizota, General Affairs Department  
Phone: +81-6-6443-3630  
E-Mail: [info@komi-hakko.co.jp](mailto:info@komi-hakko.co.jp)

### Address

TAT Edobori Building 10th Floor 1-24-12 Edobori, Nishi Ward, Osaka, Osaka Prefecture  
URL: [https://komi-hakko.co.jp/wp-content/uploads/2021/09/English\\_ver\\_websute-1.pdf](https://komi-hakko.co.jp/wp-content/uploads/2021/09/English_ver_websute-1.pdf)





Osaka  
Expo  
2025

02

**Innoqua Inc.**

### Corporate Profile

Under a guiding philosophy of “Continue to Watch the Nature We Love,” Innoqua Inc. is dedicated to research and development for its proprietary Environmental Transfer Technology™. This reproduces diverse ecosystems in aquariums by combining the breeding expertise of aquarists with research methodologies. Building on this innovation, the company aims to “expand human possibilities and create a harmonious world where both people and nature can thrive.” By recreating natural environments in controlled aquatic settings, Innoqua supports research projects that enable the study of various water ecosystems without the need for fieldwork, including in waterfront environments. The company also engages in educational initiatives aimed at raising awareness about the beauty and significance of marine life.



### Availability of Company Tours

Free

- Communication in English: Possible
- Communication in other languages: Not possible

Non-business Day: Saturdays, Sundays, National Holidays and Holidays  
Irregularly Scheduled on Weekdays  
\*Please check in advance.

Shiki Takeuchi,  
Research and Development  
Department  
Phone: +81-50-3702-1135  
E-Mail: info@innoqua.jp

### Address

Kansai Labo: Kansai University's Center for Innovation & Creativity 3-3-35 Yamate-cho, Suita, Osaka Prefecture  
URL: <https://corp.innoqua.jp/en>



03

**E · C · R CORPORATION**

### Corporate Profile

E C E R Corporation utilizes drones to inspect and repair infrastructure such as roads, bridges, ports, levees and seawalls. The unmanned aerial vehicles allow for the early detection of deterioration, enabling timely repairs and effective preventive maintenance. The company's Hien drone, fitted with specialized spraying equipment, applies various maintenance materials, such as concrete solidification agents, modification materials, and paint, to concrete and steel structures, utilizing different types of nozzles tailored for specific materials. This enables access to hard-to-reach areas, including the undersides and sides of structures, offering a feasible solution for maintenance tasks in locations where scaffolding or bucket vehicles are impractical. The technology facilitates comprehensive infrastructure maintenance.



### Availability of Company Tours

Free

- Communication in English: Possible if visitors are accompanied by an interpreter.
- Communication in other languages: Not possible

Non-business Day: Saturdays, Sundays and National Holidays

Hiroyuki Watanabe,  
Facility Department  
Phone: +81-6-6946-5050  
E-Mail: info@ecr-jp.com

### Address

Twin 21 MID Tower 37th Floor 2-1-61 Shiromi, Chuo Ward, Osaka, Osaka Prefecture  
Phone: +81-6-6946-5050  
URL: <https://ecr-jp.com/>



04

**ReallImage Inc**

### Corporate Profile

ReallImage Inc. develops glasses-free 3D displays that offer eye friendly, high realism, superior image quality, and wide viewing angles. Compared with head-mounted displays, these 3D displays cause less visual discomfort and fatigue, making them easier to use. The displays can present 3D content in real time, whether generated through computer graphics or captured by cameras, making them suitable for a variety of applications including in education, entertainment, simulators, construction and medical fields. Founded in 2023, the company draws on over 30 years of technological and business experience from its core team. It has also been recognized as a venture originating from both Osaka Metropolitan University and Tokyo Institute of Technology, now part of Institute of Science Tokyo.

### Availability of Company Tours

Free

- Communication in English: Possible
- Communication in other languages: Not possible

Non-business Day: Saturdays, Sundays and National Holidays

Hideya Takahashi,  
Takafumi Koike  
E-Mail: info@reallimage.co.jp

### Address

Osaka Metropolitan University Incubator  
Osaka Metropolitan University Sugimoto Campus 3-3-138 Sugimoto, Sumiyoshi Ward, Osaka, Osaka Prefecture  
URL: <https://www.reallimage.co.jp/?lang=en>







## SHIN-MEN TEKKO Co. Ltd

### Corporate Profile

SHIN-MEN TEKKO Co. Ltd. has strengths in anti-corrosion treatment for large steel structures, including bridges, plant equipment and industrial machinery. Operating under the motto "Preventing Corrosion for 100 Years," the company provides comprehensive anti-corrosion solutions, from surface blasting to thermal spraying and painting. In recent years, SHIN-MEN TEKKO has enhanced surface preparation efficiency through laser technology and introduced its own laser-processed products. Leveraging its advanced technological capabilities, the company has secured contracts with major clients, such as bridge construction companies, large theme parks and aerospace organizations, achieving significant accomplishments. Including its headquarters, the company operates four plants, located in Osaka, Hyogo and Toyama prefectures, which can accommodate large structures weighing up to 18 tons and measuring as much as 17 meters. SHIN-MEN TEKKO also offers on-site treatment services.



### Availability of Company Tours

Free

- Communication in English: Possible if visitors are accompanied by an interpreter.
- Communication in other languages: Not possible

Non-business Day: Sundays and National Holidays  
\*Open on about one Saturday per month. Please check our calendar for details.

Kaoru Murakami, DX Business Department  
Phone: +81-6-6471-9555  
E-Mail: [murakami@shinmen-tekko.co.jp](mailto:murakami@shinmen-tekko.co.jp)

### Address

3-9-7 Chibune, Shiniyodogawa Ward, Osaka, Osaka Prefecture  
Phone: +81-6-6471-9555  
URL: <https://www.100nensabina.jp/>



## Tokai Spring industries Inc.

### Corporate Profile

Tokai Spring Industries Inc. is a manufacturer specializing in high-quality metal springs, particularly custom special springs. With over 40 years of experience in utilizing IT to develop its own production systems, the company excels in producing a wide variety of high-quality springs in small quantities, including as few as one to five units. The company is equipped to manufacture all types of metal springs, including the largest in the world, and consistently maintains a stock of special steel materials, including nickel-based alloys, titanium alloys and copper materials. Tokai Spring is well regarded for its design proposal and development capabilities, with its springs highly valued for their quality and performance. Notably, its products have been used in prominent structures, such as the Tokyo Skytree, and H-3 space rockets.



### Availability of Company Tours

Free

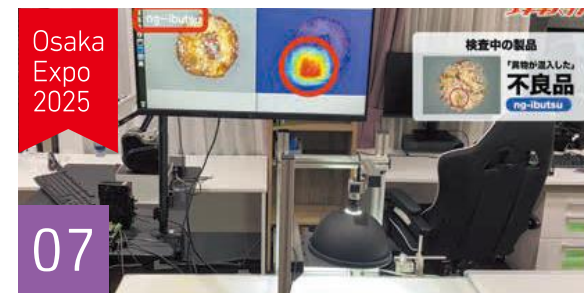
- Communication in English: Possible
- Communication in other languages: Vietnamese

Non-business Day: Saturdays, Sundays and Certain Fridays (one or two per month).

Hidenobu Yoshikawa, Global Support Dept.  
Phone: +81-6-6541-3591  
E-Mail: [clientsupport@tokaiweb.net](mailto:clientsupport@tokaiweb.net)

### Address

Nishi-honmachi Intes 12th Floor 2-3-10 Nishi-honmachi, Nishi Ward, Osaka, Osaka Prefecture  
Phone: +81-6-6541-3591  
URL: <https://www.tokaibane.com/en/>



## Hutzper Inc.

### Corporate Profile

Hutzper Inc. aims to work with clients as a partner for manufacturing industry in the field of digital transformation (DX) technologies that help to solve issues facing the sector, such as automation and labor-saving, and to provide AI that is truly useful on site. The company's strengths are enabling clients to introduce its services easily at prices that help them recover their investments early, making proposals that take the whole manufacturing process into account, and offering services as a tool that is truly helpful on site. Hutzper has developed advanced technologies that are truly valuable at manufacturing sites, based on insights gained from visiting more than 1,000 companies since its foundation. The company hopes to make contributions to the sustainable development of manufacturing industry, such as helping to make factories smarter, by supplying services capable of supporting clients from a variety of angles, including visual inspection AI.

### Availability of Company Tours

Free

- Communication in English: Possible
- Communication in other languages: Chinese, Korean

Non-business Day: Saturdays, Sundays and National Holidays

Seiko Takarada, BizDev. Div., Marketing Dept.  
Phone: +81-6-7777-2552  
E-Mail: [marketing@hutzper.com](mailto:marketing@hutzper.com)

### Address

4F, Shin-osaka CSP Building North, 1-11-16 Nishi-nakajima, Yodogawa Ward, Osaka, Osaka Prefecture  
Phone: +81-6-7777-2552  
URL: <https://hutzper.com/en/>



Osaka  
Expo  
2025

08

**Taisei Kako Co., Ltd.****Corporate Profile**

Since its foundation, Taisei Kako Co., Ltd. has continued to work on developing clean containers with excellent functions and high safety and on accumulating related manufacturing technologies, mainly focusing on the production of pharmaceuticals containers. In addition, the firm has created environmentally friendly designs, developed new materials and manufacturing environments, and established know-how on various sterilization technologies. These have been used for a wide range of products, including medical goods such as resin containers compatible with various dosage forms, highly moisture-proof press through package (PTP) sheets, high-performance aluminum tube containers, injection vials, pump dispensers, prefilled syringes and test kits, as well as cosmetics containers, receiving high acclaim from numerous customers.

**Availability of  
Company Tours**

Free

- Communication in English: Possible
- Communication in other languages: Not possible

Non-business Day:  
Saturdays, Sundays  
and National  
Holidays, Summer  
Holidays and  
Year-End/New year's  
Holidays

Daizo Udo, Global  
Business Department  
Phone: +81-72-643-  
5791

URL (Contact):  
<https://www.aisei-g.co.jp/english/form/index.php>

**Address**

2-11-6 Fujinosato,  
Ibaraki, Osaka  
Prefecture  
Phone: +81-72-648-  
3600  
URL: <https://www.aisei-g.co.jp/english/index.html>

Osaka  
Expo  
2025

09

**Nissin Seal Industry Co., Ltd.****Corporate Profile**

Manufacturing flexible packages is the main business area of Nissin Seal Industry Co., Ltd. The firm has introduced state-of-the-art printing and pouch-making machines, and provides technology for high-quality printing and a range of manufacturing and processing technologies for pouches. In particular, it has a printing machine capable of employing up to 11 colors for gravure printing. It can also reproduce delicate designs and photographic images. For pouches, the company has an array of equipment and technologies, such as BXP machines, to make special products including spouts and shaped pouches, so it can offer optimal packages that meet a variety of customer needs. Moreover, the company is actively working to reduce environmental burdens by offering products that conform to the green purchasing law as well as items using biomass films and inks, introducing volatile organic compound (VOC) treatment equipment and cutting the amount of waste.

**Availability of  
Company Tours**

Free

- Communication in English: Possible if visitors are accompanied by an interpreter.
- Communication in other languages: Chinese, Vietnamese

Non-business Day:  
Saturdays, Sundays  
and some National  
Holidays

Mai Yoshihara,  
Personnel Affairs and  
General Administration  
Department  
Phone: +81-72-362-  
5593  
E-Mail: mai.yoshihara@nissinseal.jp

**Address**

4-2-11 Mokuza-dori,  
Mihara Ward, Sakai,  
Osaka Prefecture  
Phone: +81-72-362-  
5593  
URL: <https://nissinseal.co.jp/index.html>

Osaka  
Expo  
2025

10

**KUMONOS Co., Ltd.****Corporate Profile**

KUMONOS Co., Ltd.'s proprietary "KUMONOS" technology, which can detect cracks with a width of 0.2 millimeters from a distance of 100 meters, is the only one of its kind in the world. The high-precision measurement ability of the KUMONOS technology and the firm's "SHIN KUMONOS" system, which also employs high-resolution photography, enable safe and efficient inspections for large buildings, difficult with conventional methods, as well as external walls and other structures, including even those with hazardous conditions and in dangerous areas. Contactless damage measurement and analysis are possible. The company's 3D measurement technology, employing a 3D laser scanner that can collect one million points of point cloud data per second, has been used for a total of about 3,000 projects in Japan and abroad. Experienced technicians from the company analyze every structure three-dimensionally.

**Availability of  
Company Tours**

Free

- Communication in English: Possible
- Communication in other languages: Lao, Thai

Non-business Day:  
Saturdays, Sundays,  
National Holidays,  
Summer Holidays  
(August 13-17, 2025)  
and Year-End/New  
year's Holidays

Xaysomphone Khen  
One, Marketing,  
Spatial Information  
Business, Business  
Headquarters  
Phone: +81-72-749-  
1188  
+81-90-6320-3777  
E-Mail: [khen@kumonos.co.jp](mailto:khen@kumonos.co.jp)

**Address**

2-1-15 Semba-  
higashi, Minoh,  
Osaka Prefecture  
Phone: +81-72-749-  
1188  
URL: <https://kumonos.co.jp/global/en/>





## GF HOLDING CO.,LTD

### Corporate Profile

GF HOLDING CO., LTD. champions the VEH concept, promoting an integrated fruit and vegetable industry. Guided by its mission to “save the world with fruits and vegetables,” the company operates across several sectors: V (vegetable): Processing and sales of fruits and vegetables E (environment): Production of eco-friendly disposable tableware and containers made from nonstandard fruits and vegetables, distribution surpluses, and unused by-products H (health): Development of dietary supplements, including VRC meals, veggie bars and veggie chocolates. The VAM (Vegetable Alternative Model) series offers edible and biodegradable disposable tableware and containers, providing an environmentally friendly alternative to plastic waste. Additionally, its health supplements harness the phytochemical benefits of fruits and vegetables, promoting overall wellness.

### Availability of Company Tours

Some are charged. Tours in English or Vietnamese are charged at 5,000 yen per hour per group.

- Communication in English: Possible
- Communication in other languages: Chinese, Vietnamese

Non-business Day: Sundays, Mondays and Fridays

Sakamoto Shibon, General Affairs Department  
Phone: +81-6-6757-8830  
E-mail: info@gf-holding.co.jp

### Address

2-6-21 Imabayashi, Sumiyoshi Ward, Osaka, Osaka Prefecture  
Phone: +81-6-6757-8830  
URL: <http://www.gf-holding.co.jp/>



## Arimitsu Industry Co.,Ltd.

### Corporate Profile

Arimitsu Industry Co., Ltd., established in 1923, has core strengths in high-pressure pump technologies, supplying products across a wide range of sectors, from agriculture to industrial applications. In the agricultural field, our innovative House Spray system enables automated spraying of ultra-fine particles as small as 2.5 microns for greenhouse pest controls; set to operate overnight, this system completes unmanned operations for crops and flowers by the next morning. In the industrial field, We offer a diverse range of high-pressure cleaning machines and systems designed to meet the cleaning demands of various sectors. Additionally, with increasing concerns over global warming, our fine mist cooling systems have also gained popularity as an effective solution for summer heat.



### Availability of Company Tours

Free

- Communication in English: Possible if visitors are accompanied by an interpreter.
- Communication in other languages: Not possible

Non-business Day: Saturdays, Sundays, National Holidays, Golden Week (April 29th, and May 3rd to 6th) and Summer Holidays (August 9th to 17th).

Kouji Niioka, General Affairs Department  
Phone: +81-6-6973-2001  
E-Mail: k-nioka@arimitsu.co.jp

### Address

1-3-7 Fukae Kita, Higashinari Ward, Osaka, Osaka Prefecture  
Phone: +81-6-6973-2001  
URL: <http://www.arimitsu.co.jp/english/index.html>



## Osaka Metro Co., Ltd

### Corporate Profile

Osaka Metro runs nine subway and railway covering a total distance of 137.8 kilometers, mainly in the city of Osaka. It also offers on-demand and other types of bus, taxi, bicycle sharing and related services to build diverse mobility networks as it seeks to create communities based around transportation. At Expo 2025, it will play a central role in transporting visitors on its Chuo subway line. It will also operate electric buses, including autonomous driving vehicles, inside and outside the venue. A vertiport will be set up outside the Expo venue to support operators of electric vertical take-off and landing (eVTOL) aircraft.



### Availability of Company Tours

Free

- Communication in English: Possible if visitors are accompanied by an interpreter.
- Communication in other languages: Not possible

Non-business Day: Even on business-days, tours are available only on limited days, so please enquire separately.

Mobility Creation Section, Next-Generation Mobility Promotion Division, Transportation Business Unit  
•Nakao (Deputy Manager)  
Phone: +81-90-6490-0746  
E-Mail: nakao-k739@osakametro.co.jp  
•Ohira (Staff)  
Phone: +81-80-3348-3799  
E-Mail: oohira-ya@osakametro.co.jp

### Address

Head Office: 1-12-62 Kujo-Minami, Nishi Ward, Osaka, Osaka Prefecture  
Tour Site: Central Pier Vertiport 1-105-5 Kaigandori, Minato Ward, Osaka, Osaka Prefecture  
URL: <https://www.osakametro.co.jp/en/>



Other Advanced Technologies





14

**KiwaChemical CO.,LTD****Corporate Profile**

Kiwa Chemical has two business areas: the development and production of metal surface treatment agents; and sales of industrial chemicals, mainly activated carbon.

The company is a three-time recipient of aid under the Japanese Ministry of Economy, Trade and Industry's Go-Tech, or Growth-oriented SMEs Technology Development Support Grant Program, which is aimed at supporting efforts by small and midsize manufacturers to strengthen research and development capabilities.

It has developed innovative chemicals such as surface treatments for painting that hugely reduce environmental impacts and a lubricant for cold forging that can greatly shorten processes.

Kiwa Chemical jointly created an automatic concentration management device that matches IoT, and the device won an award from a local industry bureau as an excellent new product made by a small or midsize manufacturer. In 2025, the company plans to launch a new plant with a floor space of 2,000 square meters in Toyonaka, Osaka Prefecture, aiming to produce 4,000 tons of new types of chemicals per year.

**Availability of Company Tours**

Free

- Communication in English: Possible if visitors are accompanied by an interpreter.
- Communication in other languages: Chinese

Non-business Day: Saturdays, Sundays, and National Holidays

Kenji Tanaka  
Phone: +81-6-6387-1340  
E-mail: k.tanaka@kiwachem.co.jp

**Address**

2-20-25 Tarumi-cho, Suita, Osaka Prefecture  
Phone: +81-6-6170-6320  
URL: <https://www.kiwachem.co.jp/en/>



15

**Research and Development Center for Plant Factories, Osaka Metropolitan University****Corporate Profile**

The Research and Development Center for Plant Factories at Osaka Metropolitan University is one of the most advanced research and development bases for plant factories using artificial light in Japan. Visitors can access a factory that utilizes light-emitting diodes to produce 6,600 leafy lettuce plants per day, and research facilities of aquaponic systems combining the hydroponic cultivation of plants with land-based aquaculture of fish and materials recycling plant production systems.

**Availability of Company Tours**

Charged

- Communication in English: Possible if visitors are accompanied by an interpreter.
- Communication in other languages: Not possible

Non-business Day: Saturdays, Sundays, National Holidays and Year-End/New year's Holidays (December 29th to January 3rd)

Secretariat of Research and Development Center for Plant Factories, Osaka Metropolitan University  
Phone: +81-72-254-9409  
Fax: +81-72-254-7692  
E-mail: gr-knky-pfc@omu.ac.jp

**Address**

Osaka Metropolitan University  
Nakamozu Campus Bldg.C-20  
1-1 Gakuen-cho, Naka Ward, Sakai, Osaka Prefecture  
Phone: +81-72-254-9409  
URL: <https://www.omu.ac.jp/orp/plant-factory/en/>

16

**Smileyearth Corporation****Corporate Profile**

Smileyearth Corporation operates an award-winning towel factory in Izumisano, Osaka Prefecture, the city known as the birthplace of towel manufacturing in Japan. The company is led by the first skilled craftsman in the towel industry of the Senshu region to receive the Monodzukuri Nippon Grand Award from the Japanese government. Celebrating exceptional contributions to "monodzukuri," or artisan manufacturing, the honor recognized Smileyearth's independent pioneering of a technological innovation that enables towel production with no reliance on chemical agents. This breakthrough helps to reduce river and ocean pollution caused by wastewater from towel factories. Visitors are invited to experience at firsthand the company's "nature towel factory," a facility designed for towel production in harmony with the local natural environment.

**Availability of Company Tours**

Charged

\*Reservations are required for factory tours.

- Communication in English: Possible if visitors are accompanied by an interpreter.
- Communication in other languages: Not possible

Non-business Day: Year-End/New year's Holidays

Tatsumasa Oku  
Phone: +81-72-450-2018  
E-mail: factory.tour.smileyearth@gmail.com

**Address**

2384 Kaminogo, Izumisano, Osaka Prefecture  
URL: <http://smileyearth.co.jp/>







大阪产业创造馆(Osaka Industrial Creation Hall)



Mydome 大阪展馆(Mydome Osaka)



大阪 INTEX 国际展览中心(INTEX OSAKA)



大阪府立国际会议场(大阪大立方)  
(Osaka International Convention Center)

## 在关西地区举办的展览和商务会议

### 大阪 INTEX 国际展览中心(INTEX OSAKA)

地址：大阪府大阪市住之江区南港北1-5-102



### 大阪产业创造馆(Osaka Industrial Creation Hall)

地址：大阪府大阪市中央区本町1-4-5



### EXPO Messe

地址：大阪府大阪市此花区梦岛

### Mydome 大阪展馆(Mydome Osaka)

地址：大阪府大阪市中央区本町桥2-5



### 大阪府立国际会议场(大阪大立方) (Osaka International Convention Center)

地址：大阪府大阪市北区中之岛5-3-51



### 会议展览中心(Congres Convention Center)

地址：大阪府大阪市北区大深町3-1北馆



2025年展览和商务会议日历表

\*请勿在场馆进行销售活动。

	日期		展览名称	场馆
4月	16-18	1	2025 年康复医疗展览会	大阪 INTEX 国际展览中心
	24-25	2	2025 年功能性纤维展览会	大阪产业创造馆
5月	7-11	3	日本“SHODO”：传承到未来～徜徉在天空、海洋和时间里～	世博会“WASSE”展馆
	14-16	4	第 13 届大阪高性能材料周	大阪 INTEX 国际展览中心
	14-16	5	首届大阪日本电子元器件、材料及生产设备展览会 (NEPCON JAPAN)	大阪 INTEX 国际展览中心
	14-16	6	首届大阪工厂创新周	大阪 INTEX 国际展览中心
	28-29	7	2025 年大阪电子商务展览会 (第 15 届)	Mydome 大阪展馆
	28-29	8	2025 年大阪营销技术展览会 (第 7 届)	Mydome 大阪展馆
	28-29	9	大阪 2025 年 CallCenter /CRM 演示和会议 (第 18 届)	Mydome 大阪展馆
	5-6	10	2025 年关西国际机器人工业展览会	大阪 INTEX 国际展览中心
	13-15	11	大阪国际宠物用品展览会——提升宠物生活质量	大阪 INTEX 国际展览中心
6月	25-27	12	首届日本健康产业展览会 2025	大阪 INTEX 国际展览中心
	27	13	2025 年芳香技术与原材料展览会	大阪产业创造馆
	16-17	14	OPK2025 2025 年关西光学与光电技术展 (第 7 届)	Mydome 大阪展馆
	16-19	15	2025 年未来制造业国际博览会	大阪 INTEX 国际展览中心
7月	21-23 (7月20日专供受邀客人参观)	16	Study：关西大阪国际艺术节的 Study × PLAS：亚洲艺术博览会	大阪府立国际会议场 (大阪大立方)
	24-25	17	2025 年 EdgeTech+ West 展览会	大阪 Grand Front 的会议展览中心
	24-25	18	2025 年功能性薄膜展览会	大阪产业创造馆
	5	19	2025 年包装展览会	大阪产业创造馆
9月	19	20	2025 年化妆品制造技术匹配展览会	大阪产业创造馆
	24-26	21	大阪生活方式周	大阪 INTEX 国际展览中心
	24-26	22	大阪美妆周	大阪 INTEX 国际展览中心
	1-3	23	大阪工业展	大阪 INTEX 国际展览中心
10月	10	24	2025 年升级回收技术展览会	大阪产业创造馆
	12	25	2025 年空间设计展览会	大阪产业创造馆
11月	14	26	2025 年食品加工技术展览会	大阪产业创造馆
	12	27	2025 年胶粘剂技术展览会	大阪产业创造馆
12月	17-19	28	2025 年大阪冬季数字化转型博览会 / 2025 年大阪冬季日本商业创新展览会	大阪 INTEX 国际展览中心
2026年1月	23	29	2026 年设计 / 装修技术展览会	大阪产业创造馆
2026年2月	19-20	30	2026 年高性能塑料与橡胶展览会	大阪产业创造馆



## 1 大阪INTEX国际展览中心

日期  
04月  
16日 星期三  
04月  
18日 星期五  
10:00—17:00  
※最后一天16:00结束

2025年康复医疗展览会  
2025年急性后期医学展览会

2025年看护未来展览会  
2025年居家医疗护理展览会

日本西部最大型的护理保健、福利、医疗和护理综合展。展览会备受业内推崇，为希望进入或拓展护理、福利和医疗行业的决策者和专业人士提供宣传推广机会。它通过联合举办“康复医疗”、“急性后期医学”、“未来看护”和“居家医疗护理”这四场展览会，创造无限商机。

上次活动的数据  
(参展商数量 / 参观人数)

257家公司和单位，523个展位  
参观人数47,795人

主办单位：大阪府社会福利委员会/大阪电视台/TVO EXPRO Ltd.  
地址：大阪府大阪市中央区大手前1-1-7 “康复医疗展览会”秘书处  
电话：+81-6-6944-9913



## 2 大阪产业创造馆

日期  
04月  
24日 星期四  
04月  
25日 星期五  
4月24日(第1天)13:30-17:00  
4月25日(第2天)10:00-16:00

2025年功能性纤维展览会

本展览会展示了具有附加功能的纺织品，如采用可持续材料、抗菌和抗病毒性能、优良导电性、保温性、吸水性、阻燃性和可拉伸性，以及速干性，同时介绍这些品质的技术。

上次活动的数据  
(参展商数量 / 参观人数)

43家公司  
参观人数 1,500 人(总人数)

主办单位：大阪商业发展局大阪商业创新中心工业展秘书处  
地址：大阪府大阪市中央区本町1-4-5 大阪产业创造馆  
电话：+81-6-6264-9920 (工作日10:00-12:00/13:00-17:30，国家法定节假日例外)

传真：+81-6-6264-9899  
电子邮箱：monozukuri@sansokan.jp



## 3 世博会“WASSE”展馆

日期  
05月  
07日 星期三  
05月  
11日 星期天  
9:00-21:00

日本“SHODO”：传承到未来  
~ 徜徉在天空、海洋和时间里 ~

为期五天展览会的目的是向世界推广日本书法。墙上将展示2025大阪世博会主题“构建未来社会，想象明日生活”的相关“shodo”作品，复刻一间“和室”房间，展出“kakejiku”悬挂式卷轴、“tsuite”屏风和“byobu”折叠屏风。同时，参观者还可以利用最先进技术，通过VR观看shodo作品的创作过程，并体验“空气shodo”，即利用红外传感器检测和跟踪书写者的手法，无需接触即可书写。此外，展会还将邀请技艺高超的书法家传授书法和篆刻课程，大学生进行书法表演，还有互动式shodo作品欣赏活动、工作坊和笔墨制作示范。

主办单位：日本书道艺术学院、读卖新闻 大阪本社  
特别支持：日本书道文化协会  
地址：大阪府大阪市中央区大手前1-7-31 OMM大厦7楼

电话：+81-6-6945-4501  
电子邮箱：info@nihonshogeiin.or.jp



\*所有时间均为日本标准时间。

#### 4 大阪INTEX国际展览中心

日期  
05月14日 星期三  
05月16日 星期五

##### 第13届大阪高性能材料周

世界上最大型的尖端材料技术专业展会，包括高功能薄膜、塑料、纤维素、碳纤维复合材料、金属和陶瓷。不仅突出展示这些材料，还聚焦材料行业的一系列相关技术，如制造和加工机械以及检验、测量和分析设备。展会将吸引来自各行各业的研发、设计和制造专业人士，有利于参展商与技术公司代表进行积极商务洽谈。

上次活动的数据  
(参展商数量 / 参观人数)

241家公司  
参观人数21,132人

主办单位: RX Japan Ltd.  
电话: +81-3-6739-4118  
电子邮箱: visitor-eng.material.jp@rxglobal.com



#### 5 大阪INTEX国际展览中心

Date  
05月14日 星期三  
05月16日 星期五

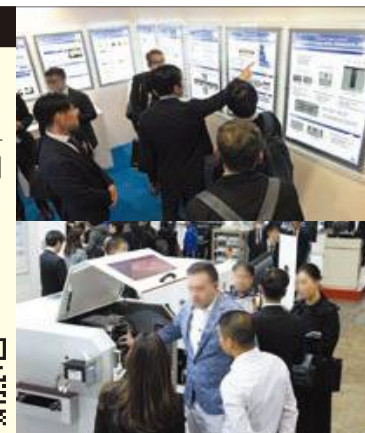
##### 首届大阪日本电子元器件、材料及生产设备展览会 (NEPCON JAPAN)

日本领先的电子研发和制造技术展会。展会将展出最新的SMT、电子元器件/材料和测试设备等，寻找电子研发和制造解决方案。首届展览会将于2025年在关西举行。

上次活动的数据  
(参展商数量 / 参观人数)

2025年5月首次举办

主办单位: RX Japan Ltd.  
电话: +81-3-6739-4102  
电子邮箱: visitor-eng.inw.jp@rxglobal.com



#### 6 大阪INTEX国际展览中心

Date  
05月14日 星期三  
05月16日 星期五

##### 首届大阪工厂创新周

工厂创新周是日本领先的展会，汇聚未来工厂的技术和解决方案。它由以下部分组成：“智能工厂展览会”（制造业数字化转型技术展会）、“RoboDEX”（机器人与自动化技术展览会）、“绿色工厂展览会”（可持续制造展会）和“制造业人力资源展览会”（人力资源解决方案展会）。首届展会将于2025年在关西举行。

上次活动的数据  
(参展商数量 / 参观人数)

2025年5月首次举办

主办单位: RX Japan Ltd.  
电话: +81-3-6739-4102  
电子邮箱: visitor.fiw-eng.jp@rxglobal.com





## 7 Mydome大阪展馆

日期  
05月28日 星期三  
05月29日 星期四  
10:00-17:00

### 2025年大阪电子商务展览会（第15届）

始于2009年，当时是日本首场电子商务和邮购商业活动，本届将全方位展示在线商务的相关最新发展和知识，包括行业的最新系统和运营技术。展会希望通过为电子商务和邮购服务公司以及在线商店运营商提供所解决方案，并举办研讨会提供最新行业趋势信息，支持行业进一步发展。

上次活动的数据  
(参展商数量 / 参观人数)

26家公司  
参观人数1,359人

主办单位：电子商务展览会秘书处  
地址：东京都千代田区鍛冶町1-8-3 神田91大厦2楼  
公司：Informa Markets Japan Co., Ltd.

电话：+81-3-5296-1020  
电子邮箱：info@ecfair.jp



## 8 Mydome大阪展馆

日期  
05月28日 星期三  
05月29日 星期四  
10:00-17:00

### 2025年大阪营销技术展览会（第7届）

展览会是一项聚焦企业营销活动的盛事。2025年将以会议形式举行本届展会，主要为研讨会和宣传活动。营销行业关注的是目前如何帮助日本公司以“有价值的产品和服务”赢得未来世界各地客户的青睐。本届展会的宗旨是提升日本的营销实力，振兴国内市场。

上次活动的数据  
(参展商数量 / 参观人数)

26家公司  
参观人数1,359人

主办单位：电子商务展览会秘书处  
地址：东京都千代田区鍛冶町1-8-3 神田91大厦2楼  
公司：Informa Markets Japan Co., Ltd.

电话：+81-3-5296-1020  
电子邮箱：info@ecfair.jp



## 9 Mydome大阪展馆

日期  
05月28日 星期三  
05月29日 星期四  
10:00-17:00

### 大阪2025年CallCenter / CRM演示和会议（第18届）

本次是第18届展会，这是日本西部最大型的商展之一，集中展示呼叫中心/客户支持行业的最新趋势和解决方案以及行业专家的知识。展会计划重点展示产品和研讨会，将提供最佳的宣传推广服务，例如展示最新的解决方案、提供商务会议机会，并介绍最新的案例和专业技术。

上次活动的数据  
(参展商数量 / 参观人数)

68家公司  
参观人数2,770人

主办单位：CallCenter / CRM演示和会议秘书处  
地址：东京都千代田区鍛冶町1-8-3 神田91大厦2楼  
公司：Informa Markets Japan Co., Ltd.

电话：+81-3-5296-1020  
电子邮箱：info@callcenter-japan.com



\*所有时间均为日本标准时间。

## 10 大阪INTEX国际展览中心

日期

06月  
05日 星期四  
06月  
06日 星期五

10:00-17:00

### 2025年关西国际机器人工业展览会

本次展览会的目的是帮助发展和拓展机器人、交通出行和航天商业行业市场。汇集了来自行业技术开发商和制造商、技术企业用户以及大学、研究机构、地方政府和国家政府机构的人员，创造信息交流和人员互动机会，进一步推动行业发展。

上次活动的数据  
(参展商数量 / 参观人数)

参观人数15,596人

主办单位：国际机器人工业展览会秘书处  
Exhibition Organizers Co., Ltd.  
地址：东京都涩谷区神泉町10-15-402

电话：+81-3-5489-7405  
传真：+81-3-6735-7204  
电子邮箱：info@srobo.jp



## 11 大阪INTEX国际展览中心

日期

06月  
13日 星期五  
06月  
15日 星期天

10:00-17:00

### 大阪国际宠物用品展览会 —提升宠物生活质量—

本次展会既是宠物行业专业人士的交易会，也是私人宠物活动。它汇集了国内外参展商的各种宠物相关产品和服务，包括宠物食品和用品、IT器具、家具和旅行。

上次活动的数据  
(参展商数量 / 参观人数)

参展商数量：281家公司  
参观人数18,710人

主办单位：国际宠物用品展览会主办单位办公室  
Messe Frankfurt Japan Ltd.  
地址：东京都千代田区富士见1-8-19 住友不动产千代田富士见大厦4楼

电话：+81-3-3262-8456  
电子邮箱：info@interpets.jp



## 12 大阪INTEX国际展览中心

日期

06月  
25日 星期三  
06月  
27日 星期五

10:00-17:00

### 首届日本健康产业展览会

日本健康产业展是国际贸易展会，汇集了来自日本国内外的医疗保健专业人士，向全世界展示日本的先进技术和医疗服务，在整体上振兴和提高日本医疗界和医疗保健行业的竞争力，提出创新设计，最终使全世界的医疗机构、患者和社会受益。首届活动将于2025年6月与“健康周”同时举行，这是2025年关西大阪世博会的八个“主题周”之一。除了大型展览区外，还将举办多场研讨会和对接会。

上次活动的数据  
(参展商数量 / 参观人数)

2025年6月首次举办

主办单位：日本健康产业展览会委员会  
地址：东京都千代田区银台町1-8-3 神田91大厦2楼  
Informa Markets Japan Co., Ltd.

联系人：日本健康产业展览会主办单位  
电话：+81-3-5296-1034  
电子邮箱：japanhealth-jp@informa.com





## 13 大阪产业创造馆

日期  
06月  
27日 星期五

### 2025年芳香技术与原材料展览会

本次参展公司利用其芳香技术、原材料和产品，为产品、空间和服务提供高附加值。其中不乏一些拥有技术、材料和原始设备制造商（OEM）协议专有技术的公司，能够支持香气相关新产品的开发，寻找提供技术咨询的商业伙伴，并收集产品差异化方面的信息。

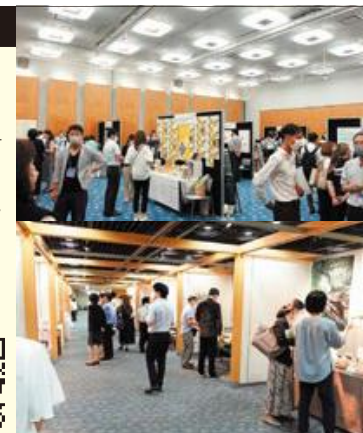
10:30-16:30

上次活动的数据  
(参展商数量 / 参观人数)

50家公司  
参观人数834人

主办单位：大阪商业发展局大阪商业创新中心工业展秘书处  
地址：大阪府大阪市中央区本町1-4-5 大阪产业创造馆  
电话：+81-6-6264-9920（工作日10:00-12:00/13:00-17:30，国家法定节假日例外）

传真：+81-6-6264-9899  
电子邮箱：monozukuri@sansokan.jp



## 14 Mydome大阪展馆

日期  
07月  
16日 星期三  
07月  
17日 星期四  
10:00-17:00

### OPK2025 2025年关西光学与光电技术展（第7届）

2025年关西光学与光电研讨会（并行活动）、激光技术研究所研究成果简报会（并行活动）、日本应用物理学会光电分会研讨会（并行活动）、其他相关研讨会（并行活动）

光学和光电技术应用广泛，但2019年7月Optronics Co.在大阪举办关西光学和光电技术展前，关西地区鲜有获取光电信息的机会。2025大阪世博会前，关西和日本西部地区的科技导向日益浓厚，大家尤为关注在虚拟现实和增强现实的光学和光电产品，本届活动将隆重推介的机器人技术。此次参展商包括从事光学、光电和图像测量相关设备的大型日本企业，为用户体验尖端光学技术的提供宝贵平台。

上次活动的数据  
(参展商数量 / 参观人数)

62家公司  
参观人数1,251人

主办单位：Optronics Co., Ltd.  
地址：东京都新宿区新小川町5-5 三垦大厦一楼  
联系人：主办单位办公室  
电话：+81-3-3269-3550  
电子邮箱：event@optronics.co.jp



## 15 大阪INTEX国际展览中心

日期  
07月  
16日 星期三  
07月  
19日 星期六  
10:00-17:00  
※最后一天16:00结束

### 2025年未来制造业国际博览会

展会汇集了行业一流产品和技术，向国内外行家进行推介。还将通过展览和论坛，促进商务洽谈和建立联系。此外，本展会还将重点展示日本2025年大阪世界博览会的意义及其对制造业的积极影响。展览会将展示各项解决行业挑战并帮助塑造更美好未来的产品和尖端技术。活动期间将安排一场国际研讨会，主办单位旨在促成一场展示日本优秀产品的国际贸易展览会。

上次活动的数据  
(参展商数量 / 参观人数)

187家公司和单位，368个展位  
参观人数13,210人

主办单位：未来制造业国际博览会执行委员会  
地址：大阪府大阪市中央区北滨东2-16  
联系人：株式会社日刊工业新闻社、未来制造业国际博览会秘书处

Nikkan Kogyo Shimbun Ltd.  
电话：+81-6-6946-3384  
电子邮箱：fmiexpo@nikkan.tech



\*所有时间均为日本标准时间。

## 16 大阪府立国际会议场（大阪大立方）

日期  
07月21日 星期一  
07月23日 星期三  
<仅获邀人士预览和参观>  
2025年7月20日（星期天）

### Study: 关西大阪国际艺术节的Study × PLAS: 亚洲艺术博览会

2025年Study: 关西大阪国际艺术节与2025大阪世博会同期举行，作为该艺术节的组成部分，Study×PLAS: 亚洲艺术博览会是一场综合性艺术和创意的博览会，旨在纪念日本和韩国邦交正常化60周年，建立两国和更广泛的亚洲地区面向未来的文化和艺术关系。同时将举办大阪NFT会议，即关于非同质化代币艺术的大型国际会议。在举办Study×PLAS: 亚洲艺术博览会期间，大阪市还将庆祝天神祭，届时将吸引众多艺术相关人士。

上次活动的数据  
(参展商数量 / 参观人数)

36家公司和单位  
参观人数1,500人

主办单位：关西大阪国际艺术节  
执行委员会、(ARTLOGUE Inc.)  
<https://osaka-kansai.art/>

地址：大阪府大阪市北区中之岛5-3-51  
3楼、10楼、12楼  
大阪府立国际会议场（大阪大立方）

电话：+81-6-6467-8656  
电子邮箱：study\_artfair@artlogue.org



## 17 大阪Grand Front的会议展览中心

日期  
07月24日 星期四  
07月25日 星期五  
10:00-17:00

### 2025年EdgeTech + West展览会

2025年EdgeTech+West展览会旨在分享人工智能、生成式人工智能、物联网、嵌入式系统和安全等最新技术趋势，以及它们在工业领域的应用。

在如今的商业转型背景下，本展览会通过添加边缘技术实现客户驱动的价值创造。展览会涵盖了人工智能/生成式人工智能、物联网、安全和安保、无线、嵌入式硬件/半导体设备、嵌入式软件、开发支持、开发环境、云原生、精益和敏捷、DevOps、再培训/软件人力资源开发、开源软件、SDV、视觉人工智能。

上次活动的数据  
(参展商数量 / 参观人数)

125家公司和单位  
参观人数5,885人

主办单位：日本嵌入式系统技术协会（JASA）  
活动策划和宣传：NANO OPT Media, Inc.  
EdgeTech+展览管理办公室（NANO OPT Media, Inc.）

电子邮箱：edgetech-info@f2ff.jp



## 18 大阪产业创造馆

日期  
07月24日 星期四  
07月25日 星期五  
7月24日(第1天) 13:30-17:00  
7月25日(第2天) 10:00-16:00

### 2025年功能性薄膜展览会

参展企业将展出各自独门的加工技术，用于生产优异导电性、阻气性、隔热性和环保性等性能的薄膜和片材。此外，还将展出生物质材料、回收塑料瓶和其他环保产品。薄膜技术广泛应用到电子产品（如显示器）、汽车、食品和医疗设备以及制药等领域。

上次活动的数据  
(参展商数量 / 参观人数)

56家公司  
参观人数1,312人（总人数）

主办单位：大阪商业发展局大阪商业创新中心工业展秘书处  
地址：大阪府大阪市中央区本町1-4-5 大阪产业创造馆  
电话：+81-6-6264-9920（工作日10:00-12:00/13:00-17:30，国家法定节假日例外）

传真：+81-6-6264-9899  
电子邮箱：monozukuri@sansokan.jp





## 19 大阪产业创造馆

日期  
09月  
05 星期五

### 2025年包装展览会

本展会将聚焦消费品包装的制造、材料 and 设计, 汇集了众多拥有产品开发、品牌推广和包装更新的技术和专业知识的  
企业。非常适合希望实现产品差异化和实现产品高附加值的企业。

10:30-16:30

上次活动的数据  
(参展商数量 / 参观人数)

58家公司  
参观人数905人

主办单位: 大阪商业发展局大阪商业创新中心工业展秘书处  
地址: 大阪府大阪市中央区本町1-4-5 大阪产业创造馆  
电话: +81-6-6264-9920 (工作日10:00-12:00/13:00-17:30, 国家法定节假日例外)

传真: +81-6-6264-9899  
电子邮箱: monozukuri@sansokan.jp



## 20 大阪产业创造馆

日期  
09月  
19 星期五

### 2025年化妆品制造技术匹配展览会

本展览会将展示各类化妆品制造技术, 包括原材料开发和加工, 以及产品装填和产品包装。此外, 还将展出化妆品的  
相关技术和专业知识, 如涵盖从产品规划到商业化全过程的外包。

10:30-16:30

上次活动的数据  
(参展商数量 / 参观人数)

42家公司  
参观人数755人

主办单位: 大阪商业发展局大阪商业创新中心工业展秘书处  
地址: 大阪府大阪市中央区本町1-4-5 大阪产业创造馆  
电话: +81-6-6264-9920 (工作日10:00-12:00/13:00-17:30, 国家法定节假日例外)

传真: +81-6-6264-9899  
电子邮箱: monozukuri@sansokan.jp



## 21 大阪INTEX国际展览中心

日期  
09月  
24 星期三  
09月  
26 星期五

### 大阪生活方式周

这是一场用于展示现代生活方式产品的综合性B2B贸易展。特色展品旨在改善日常生活, 包括礼品、生活方式产品、  
美容产品、美食礼品、纪念品和面向入境游客的商品。  
展会将汇集各种具有卓越设计、功能和故事的引领潮流的产品, 构筑零售商、百货公司和其他相关者买家、商品开发  
人员和采购经理进行商务洽谈的平台。

上次活动的数据  
(参展商数量 / 参观人数)

201家公司  
参观人数15,855人

主办单位: RX Japan Ltd.  
电话: +81-3-6739-4105  
电子邮箱: lifestyle-eng.jp@rxglobal.com



\*所有时间均为日本标准时间。

## 22 大阪INTEX国际展览中心

日期

09月  
24日 星期三  
09月  
26日 星期五

### 大阪美妆周

本展览会由两场专业贸易展组成：最前沿化妆品发展的化妆品发展展和汇集世界各地最新化妆品的国际化妆品贸易展会。这场综合性展会将汇集从原料、容器和包装到OEM服务以及成品化妆品和美容产品的方方面面，展示行业创新和产品。参展方包括来自美容美妆行业的专业人士，如化妆品开发的专业人员、制造商、进出口商和批发商，以及来自美容美发店和美妆店的专业人士，有助于了解行业最新趋势和业务拓展。

上次活动的数据  
(参展商数量 / 参观人数)

220家公司  
参观人数15,603人

主办单位：RX Japan Ltd.  
联系方式：cosme-tokyo.jp@rxglobal.com  
电话：+81-3-6739-4121



## 23 大阪INTEX国际展览中心

日期

10月  
01日 星期三  
10月  
03日 星期五

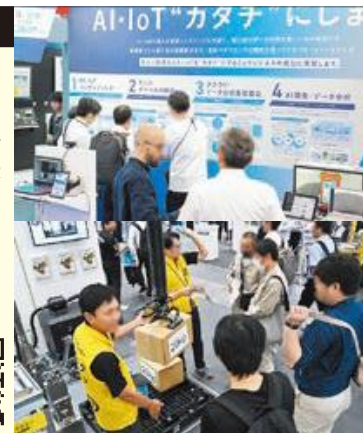
### 2025年大阪工业展

本展会主要展示来自世界各地的IT解决方案。数字化转型产品、机械部件、设备、装置、测量产品等。参观者主要是来自关西地区的制造业设计、开发、制造、生产工程、采购和信息系统部门。2025年，展览会将新增“智能维修博览会”，每个产品类别共有10场专业技术展。此外，展会还将同期举行会议，参观者可以借此了解制造业的前沿案例。

上次活动的数据  
(参展商数量 / 参观人数)

1,250家公司  
参观人数35,000人

主办单位：RX Japan Ltd.  
联系电话：+81-3-6739-4106  
电子邮箱：visitor-eng.mfg.jp@rxglobal.com



## 24 大阪产业创造馆

日期

10月  
10日 星期五

### 2025年升级回收技术展览会

升级回收技术展将推出通过回收废物和残留物，提供作为工业原料的塑料、木材和其他材料的企业，以及拥有此类材料生产技术的企业。

10:30-16:30

上次活动的数据  
(参展商数量 / 参观人数)

31家公司  
参观人数638人

主办单位：大阪商业发展局大阪商业创新中心工业展秘书处  
地址：大阪府大阪市中央区本町1-4-5 大阪产业创造馆  
电话：+81-6-6264-9920 (工作日10:00-12:00/13:00-17:30, 国家法定节假日例外)

传真：+81-6-6264-9899  
电子邮箱：monozukuri@sansokan.jp





## 25 大阪产业创造馆

日期  
11月  
12日 星期三

### 2025年空间设计展览会

本展览会重点关注能够为商业和公共设施建设的展台以及展示窗、展览活动提供生产和设计相关的总体规划和专业知识。参展企业还包括材料行业企业，这些企业经营具有独特设计的高端装饰性建材。

10:30-16:30

上次活动的数据  
(参展商数量 / 参观人数)

48家公司  
参观人数455人

主办单位：大阪商业发展局大阪商业创新中心工业展秘书处  
地址：大阪府大阪市中央区本町1-4-5 大阪产业创造馆  
电话：+81-6-6264-9920（工作日10:00-12:00/13:00-17:30，国家法定节假日例外）

传真：+81-6-6264-9899  
电子邮箱：monozukuri@sansokan.jp



## 26 大阪产业创造馆

日期  
11月  
14日 星期五

### 2025年食品加工技术展览会

本展会的参展企业拥有食品相关技术，包括自动化和节省劳动力、卫生和质量控制、长期储存和保鲜，以及回收利用食品残渣。

10:30-16:30

上次活动的数据  
(参展商数量 / 参观人数)

39家公司  
参观人数503人

主办单位：大阪商业发展局大阪商业创新中心工业展秘书处  
地址：大阪府大阪市中央区本町1-4-5 大阪产业创造馆  
电话：+81-6-6264-9920（工作日10:00-12:00/13:00-17:30，国家法定节假日例外）

传真：+81-6-6264-9899  
电子邮箱：monozukuri@sansokan.jp



## 27 大阪产业创造馆

日期  
12月  
12日 星期五

### 2025年胶粘剂技术展览会

本展会聚焦瞬干、耐热和导电的工业用胶粘剂以及双组分胶粘剂。此外，还将展出可移除胶粘剂等消费品，以及用于强力、低粘力等胶粘剂的技术和材料。

10:30-16:30

上次活动的数据  
(参展商数量 / 参观人数)

54家公司  
参观人数1,067人

主办单位：大阪商业发展局大阪商业创新中心工业展秘书处  
地址：大阪府大阪市中央区本町1-4-5 大阪产业创造馆  
电话：+81-6-6264-9920（工作日10:00-12:00/13:00-17:30，国家法定节假日例外）

传真：+81-6-6264-9899  
电子邮箱：monozukuri@sansokan.jp



\*所有时间均为日本标准时间。

## 28 大阪INTEX国际展览中心

日期  
12月17日 星期三  
12月19日 星期五  
10:00-17:00

### 2025年大阪冬季数字化转型博览会/ 2025年大阪冬季日本商业创新展览会

数字化转型博览会 (DX EXPO) 是日本最大型的综合性数字化转型展览会之一, 帮助提高工作效率、促进工作方式改革和加强管理基础的解决方案。

与本届展览会同时举行的还有日本商业创新展览会, 这是一场综合性展览会。用于为处于充满易变性 (Volatility)、不确定性 (Uncertainty)、复杂性 (Complexity) 和模糊性 (Ambiguity) 的乌卡时代的企业管理挑战的解决方案。

上次活动的数据  
(参展商数量 / 参观人数)

东京有明国际展览中心 (Big Sight), 2024 年 10 月  
410 家公司  
参观人数约 25,000 人

ATC hall, 2023 年 12 月  
115 家公司  
参观人数约 5,000 人

主办单位: 2025年大阪冬季数字化转型博览会/ 2025年大阪冬季日本商业创新展览会执行委员会  
地址: PMO Tamachi IV 7th Floor 5-29-19 Shiba, Minato Ward, Tokyo

联系方式: Everidge Co., Ltd. 展览业务部  
电话: +81-3-5715-6012  
电子邮箱: dx-expo@bizcrew.jp



## 29 大阪产业创造馆

日期  
2026年  
01月23日 星期五  
10:30-16:30

### 2026年设计/ 装修技术展览会

本展会聚焦于增强产品设计的气相沉积、热转印等表面处理技术, 以及塑料和金属表面的丝网印刷和曲面印刷等技术。

上次活动的数据  
(参展商数量 / 参观人数)

50家公司  
参观人数946人

主办单位: 大阪商业发展局大阪商业创新中心工业展秘书处  
地址: 大阪府大阪市中央区本町1-4-5 大阪产业创造馆  
电话: +81-6-6264-9920 (工作日10:00-12:00/13:00-17:30, 国家法定节假日日例外)

传真: +81-6-6264-9899  
电子邮箱: monozukuri@sansokan.jp



## 30 大阪产业创造馆

日期  
2026年  
02月19日 星期四  
02月20日 星期五  
2月19日(第1天)13:30-17:00  
2月20日(第2天)10:00-16:00

### 2026年高性能塑料与橡胶展览会

本展会汇集了拥有生物塑料等各种塑料材料和橡胶材料加工技术的企业, 以及提供相关工程服务的。

上次活动的数据  
(参展商数量 / 参观人数)

60家公司  
参观人数 1,366 人

主办单位: 大阪商业发展局大阪商业创新中心工业展秘书处  
地址: 大阪府大阪市中央区本町1-4-5 大阪产业创造馆  
电话: +81-6-6264-9920 (工作日10:00-12:00/13:00-17:30, 国家法定节假日日例外)

传真: +81-6-6264-9899  
电子邮箱: monozukuri@sansokan.jp





## 大阪一站式商务服务台

由大阪府政府、大阪市政府联手和多家企业支持,设立了大阪一站式商务服务台。以其及时妥善地处理来自海外的商务咨询、为在阪企业创造商机。  
在2025年世博会期间有意在大阪地区举办商务活动或派遣商务代表团前的海外官方机构,欢迎各位咨询。

### 【联系方式】

大阪国际大厦 29 楼日本贸易振兴机构(JETRO)大阪办事处  
地址: 大阪市中心安土町 2-3-13 大阪国际大厦 29 楼  
电话: +81-6-4705-8607  
(办公时间: 工作日 9:00-17:00, 年末 / 年初假期例外)  
电子邮箱: Osaka\_Business\_Onestop@jetro.go.jp  
【URL】 [https://www.jetro.go.jp/en/osaka\\_bsd/](https://www.jetro.go.jp/en/osaka_bsd/)



## 帮助中小型制造企业安排参观考察的接待服务

“Osaka Machiju Monozukuri Pavilion”门户网站提供有关大阪府各地展厅以及希望参观考察当地工厂的详细信息。平台助力展示大阪府中小型制造商的技术能力及其产品的吸引力。

此网站为有意向者提供有效的考察信息,申请者可在网站内报名感兴趣的企业。

此外,还有专门的接待人员根据参观者需求提供量身定制的咨询。

### 【联系方式】

大阪商业发展局 MOBIO 业务部  
地址: 大阪府东大阪市荒本北 1-4-17 Creation Core 东大阪 北馆 1 楼  
电子邮箱: factory@m-osaka.com  
【URL】 <https://shisaly-pavilion.com/>



## 大阪商业投资中心 (O-BIC)

由大阪府政府、大阪市政府和大阪工商会议所联合,于2001年4月成立了大阪商业投资中心(O-BIC)。

大阪商业投资中心是一个一站式服务中心,为希望在大阪拓展业务的海外企业、外交使团和经济组织提供综合支持,包括基本信息和专家建议。它还为已在日本正常经营但计划在大阪再扩建的海外公司提供帮助。

### 【联系方式】

大阪商工会议所国际部  
地址: 大阪市中心本町桥 2-8  
电话: +81-6-6944-6298  
传真: +81-6-6944-6293  
(办公时间: 工作日 9:00-17:15, 年末 / 年初假期例外)  
【URL】 <https://o-bic.net/>



## 2025大阪世博会MOZUYAN MALL商务配对系统

2025大阪世博会MOZUYAN MALL商务配对系统是由大阪府政府建立的采购支持平台。网站提供大阪府中小企业的商品和服务信息,促进企业间的业务匹配。同时设立了呼叫中心,帮助寻找匹配的供应商。如需在大阪寻找合作伙伴,请随时联系呼叫中心。

### 【联系方式】

MOZUYAN MALL 呼叫中心  
电话: +81-6-7712-2806  
(办公时间: 工作日 9:00-17:30, 年末 / 年初假期例外)  
电子邮箱: mozuyanmall\_touroku@mail.bensys.jp  
提供日语、英语和法语支持  
【URL】 <https://www.expo-mozuyanmall.jp/en/>



\*免费注册/使用。

\*所有时间均为日本标准时间。

2025大阪世博会  
官方吉祥物  
MYAKU-MYAKU



请花点时间扫描右侧的二维码,完成  
我们关于本手册的调查。

本次调查由时事通信社进行分析。



请打开!! 大阪

~有关大阪创业的相关信息~



YouTube

联系方式

大阪府工商和劳工厅成长型产业促进办公室国际业务与创业支援课

电话: +81-6-6210-9502 / 传真: +81-6-6210-9296 / 电子邮箱: [global@gbox.pref.osaka.lg.jp](mailto:global@gbox.pref.osaka.lg.jp)

地址: 大阪府大阪市住之江区南港北 1-14-16 大阪府咲洲厅舍 (咲洲宇宙塔) 25 楼



日本公益财团法人大阪产业局上海代表处(大阪府上海事务所)

电话: +86-021-6270-1901 / 传真: +86-021-6270-1351 / 电子邮箱: [osaka@ibo-sh.com](mailto:osaka@ibo-sh.com)

地址: 上海市延安西路 2201 号上海国际贸易中心 408 室



2025大阪世博会  
官方吉祥物  
MYAKU-MYAKU

