

OSAKA

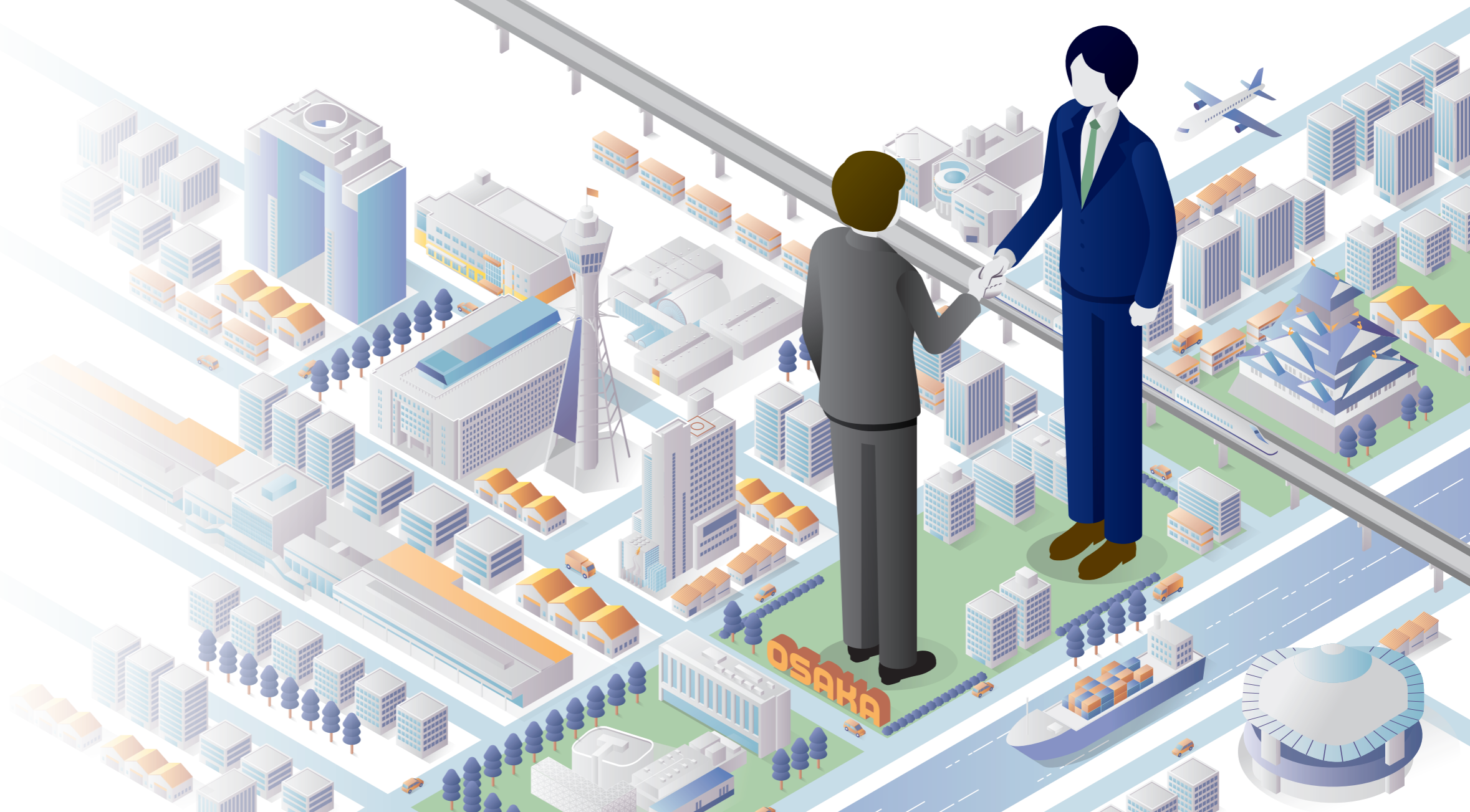
Investment Guide

International Business and Start-up Support Division,
Growth Industry Promotion Office
Osaka Prefectural Government,
Department of Commerce,
Industry and Labor

25F, Sakishima Cosmo Tower, 1-14-16
Nanko kita, Suminoe-ku, Osaka, 559-8555
Phone: +81-6-6210-9406 / +81-6-6210-9482



OPEN!! OSAKA



Osaka: Driving the Future

With its excellent accessibility, well-developed infrastructure, competitive business costs, and robust business support, Osaka—fueled by a long tradition of entrepreneurial spirit—continues to generate new opportunities across diverse industries. These strengths are driving its ongoing growth as a leading economic city.



Hosting of Expo 2025 Osaka, Kansai, Japan

Expo 2025, themed Designing Future Society for Our Lives, will drive innovation and advance the practical application of cutting-edge technologies, building on its lasting legacy.

The Social Implementation of AAM (Advanced Air Mobility)

Working with prefectures across the Kansai region, we are developing a wide-reaching transportation network that connects tourist destinations by AAM, taking the lead nationwide in bringing AAM for commercial flights.



Challenges Towards Realizing Global Financial City OSAKA

Osaka aims to become a global financial city that fosters growth and innovation among Osaka-based businesses, while driving broader economic development, by enhancing financial functions and attracting talent, corporations, and investment from around the world.



Building the Urban Infrastructure for Growth

Major projects, such as the Linear Chuo Shinkansen between Tokyo and Osaka, and the Naniwasuji Line, are moving forward, further enhancing the urban infrastructure that underpins Osaka's growth.

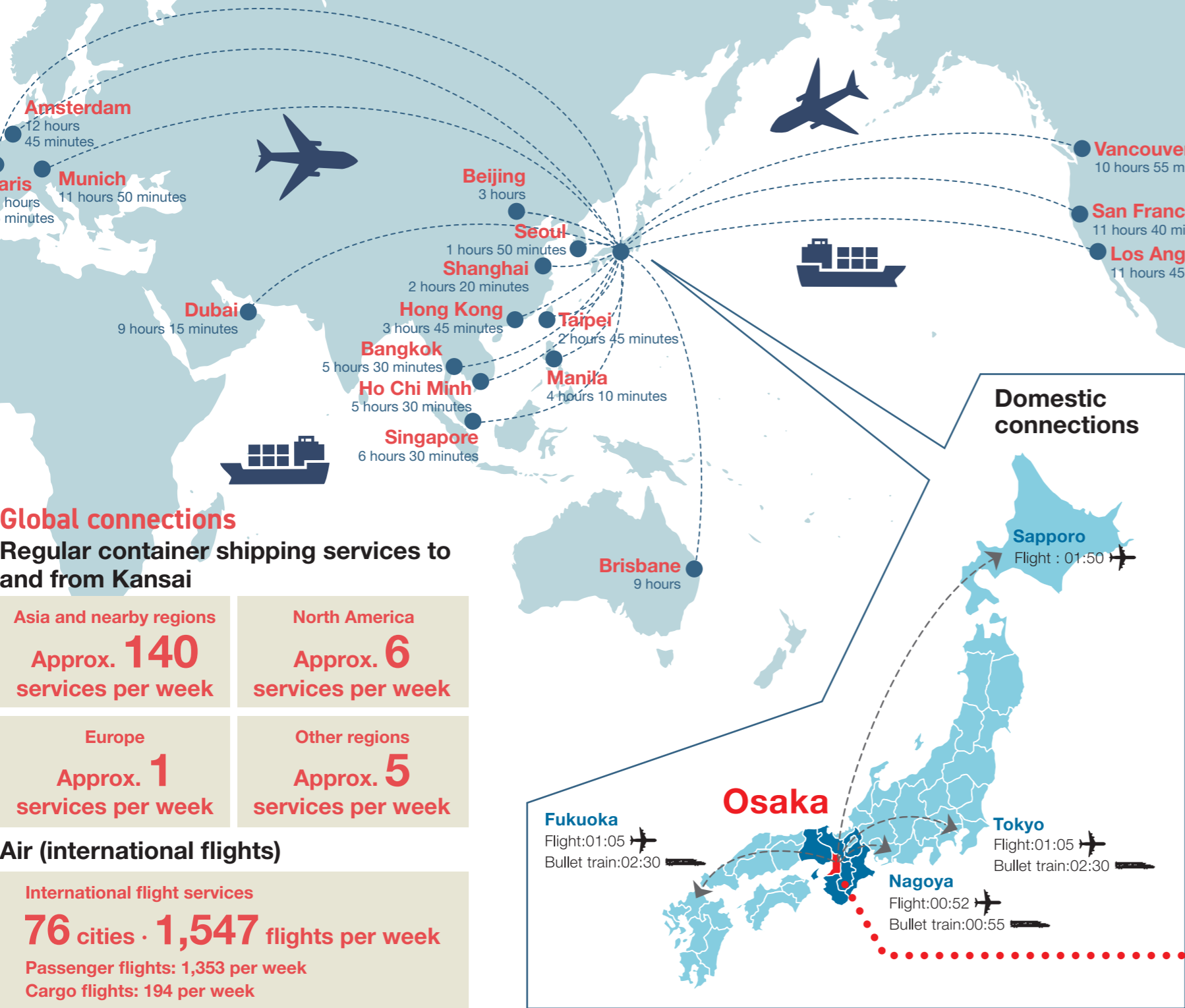
Enhancing Urban Appeal

Redevelopment is in full swing in key areas such as Umekita Phase 2, the eastern district of Osaka Castle, and the surroundings of Shin-Osaka Station. These projects are enhancing urban functionality and are poised to transform Osaka in a significant way.

Robust Infrastructure Supporting Business in Osaka and the Kansai Region

Seamless access to Osaka from across Japan and the world!

Osaka boasts a well-developed transportation network, encompassing land, air, and sea routes. With international airports that welcome people, goods, and information from around the world, along with busy ports, extensive railways, and major highways connecting across Japan, the city is exceptionally accessible. Beyond strong domestic links, Osaka serves as a hub to Asia and the wider world, making it an outstanding location for business and logistics.

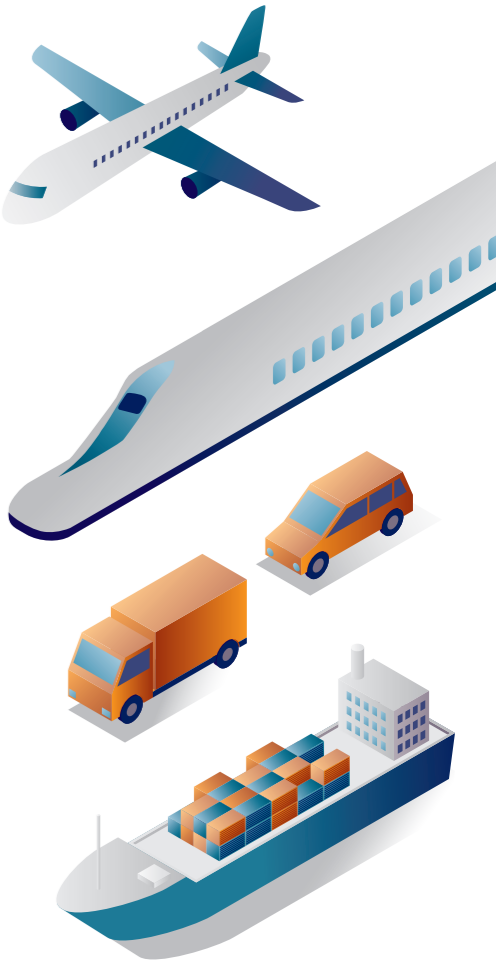


Population (Year 2024)
(Country/Region • City) (a million)

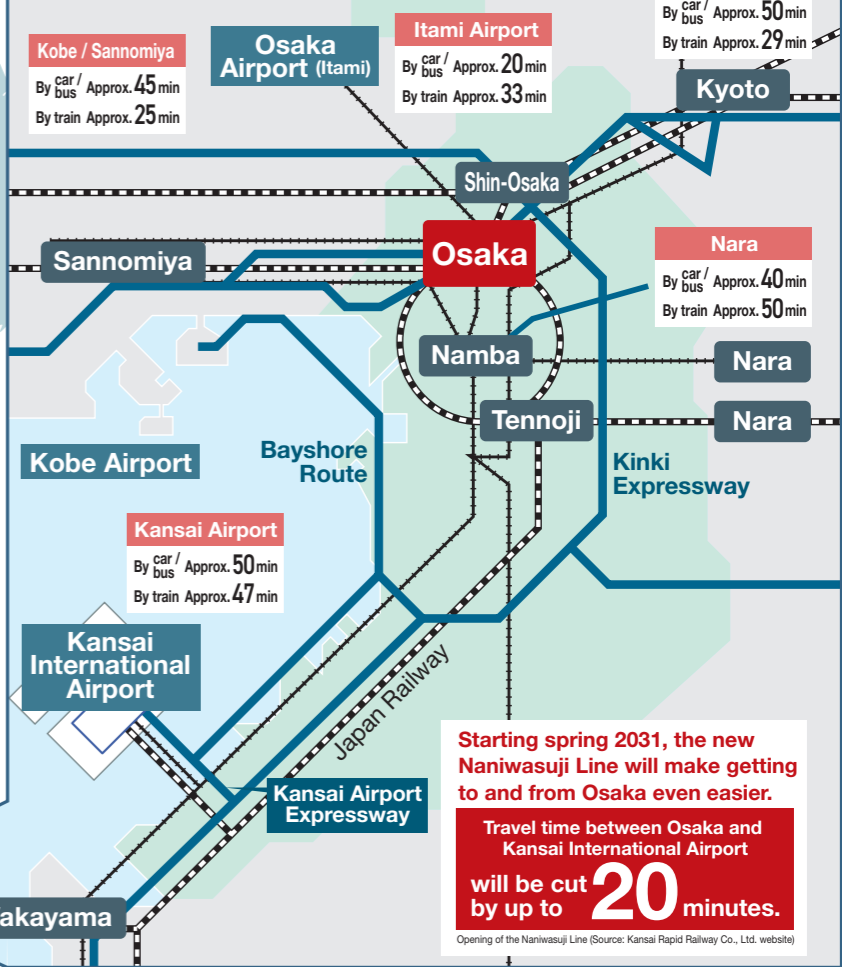
Country or Region	Population
U.S.A.	331.4
Japan	126.1
Mexico	126.0
Germany	80.2
Australia	25.4
Osaka Pref.	8.7

City	Population
Jakarta (Indonesia)	10,562
Seoul (South Korea)	9,411
Osaka Pref.	8,770
New York (U.S.A.)	8,258
Guangzhou (China)	8,525
Bangkok (Thailand)	8,444

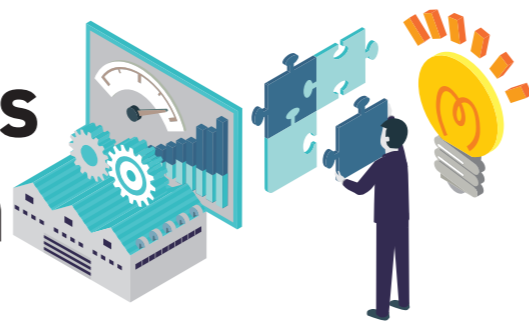
World Statistics 2025
Statistics Bureau, Ministry of Internal Affairs and Communications
For Osaka, data is based on Osaka Prefectural Government (as of October 1, 2024)



Connections from Osaka Station



Osaka-Kansai: An Outstanding Business Environment for Growth



Osaka – A City of Unmatched Appeal

One of the World's Leading Economic Powerhouses

Osaka, Japan's second-largest economic zone after Tokyo, boasts impressive potential. The GDP of the Osaka-Kansai region rivals that of many OECD member countries, with Osaka itself accounting for approximately half of the region's total GDP.

*Switzerland (OECD): USD 813.4 billion

Sources: United Nations, National Accounts Main Aggregates Database (downloaded August 2024), calendar year 2021.
Cabinet Office, Government of Japan, Prefectural Accounts 2020.
Annual exchange rate based on 1 USD = 112.36 JPY (Bank of Japan, Time-Series Data).

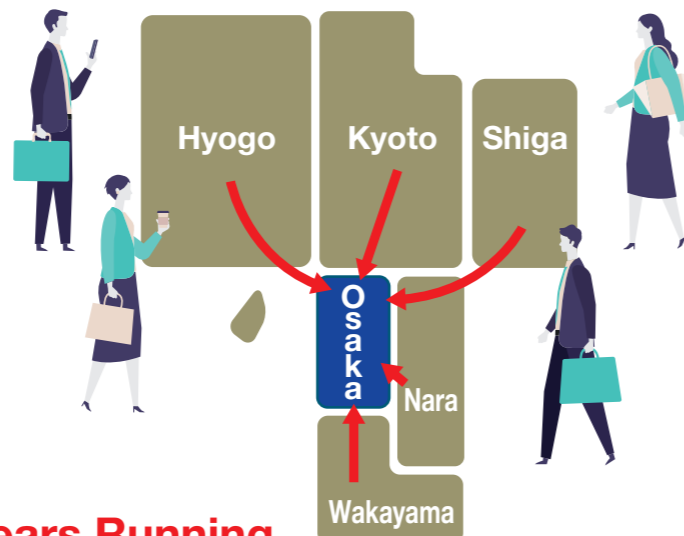


Plentiful Workforce, Easy Access to Talent

A large number of people from other prefectures in the Kansai region commute to Osaka for work or study.

Total **580,000** people

Source: 2020 Census of Japan – Population and Employment Status by Place of Work or Study



Japan's **Top-Ranked City** for **Four Years Running**

Easy access for work and study!

Lowest commuter congestion of Japan's three major metropolitan areas

No. 1^{*1}

Low cost of living!

Price index compared with major global cities

Approx. **70%**^{*2}

Affordable rent!

Rent compared with Tokyo

Approx. **40%**^{*3}
Osaka: ¥128,000 Tokyo: ¥305,000

*1 Among Japan's three major metropolitan areas, Osaka has the lowest commuter congestion rate—115%, compared with 136% in Tokyo and 123% in Nagoya (over 20% lower than Tokyo).
*2 Price index — Osaka: 95%, Singapore: 114%, Hong Kong: 135% (Tokyo = 100).
*3 With the same conditions (a 10-minute commute and a newly built 4DK apartment), you can live within 10 minutes of Osaka Station. However, for the same rent near Tokyo Station, your commute would be approximately 1 hour and 30 minutes.

Source: Ministry of Land, Infrastructure, Transport and Tourism – Results of the Urban Railway Congestion Rate Survey (FY2023)

Source: Statistics Bureau, Ministry of Internal Affairs and Communications, "World Statistics" (2022); Ministry of Internal Affairs and Communications, "Regional Difference Index of Consumer Prices" (September 2021)

Lower Business Costs Compared to Tokyo

In Osaka, lower rents and average wages help reduce the overall cost of doing business. *With Tokyo set at 100

Average commercial land price

48.2%

Average industrial land price

37.6%

Average office land price

66.5%

Average wage in warehousing

92.4%

Average wage

92.3%

Source: Ministry of Land, Infrastructure, Transport and Tourism, "2023 Prefectural Land Price Survey"; CBRE K.K., "Japan Office MarketView Q1 2024"; CBRE K.K., "Japan Logistics MarketView Q1 2024"; Ministry of Health, Labour and Welfare, "2023 Basic Survey on Wage Structure"

Shaping the Future of Central Osaka

Umekita Phase 2

In one of Osaka's most prestigious locations, a vast green space forms the centerpiece of a dynamic hub combining offices, retail, and a variety of other facilities.



Courtesy of Grand Green Osaka Developers

A next-generation workspace has emerged, fostering innovations possible only here.



Courtesy of Grand Green Osaka Developers

Known for having some of the best transport links in the Kansai region, the area will become even more accessible from southern Osaka, including Kansai International Airport, with the opening of the Naniwasuji Line in 2031.



Courtesy of Grand Green Osaka Developers

With its expansive office space, it offers a diverse range of work environments to suit various industries and working styles.

Osaka Castle East District

An innovation hub growing alongside leading universities



Osaka Metropolitan University Morinomiya Campus

*Artist's rendering for reference only; subject to change.

Courtesy of Osaka Metropolitan University Corporation

Building on its excellent transport links, the city aims to foster a vibrant, international community—led by Osaka Metropolitan University—where people of all ages and backgrounds can gather and connect.



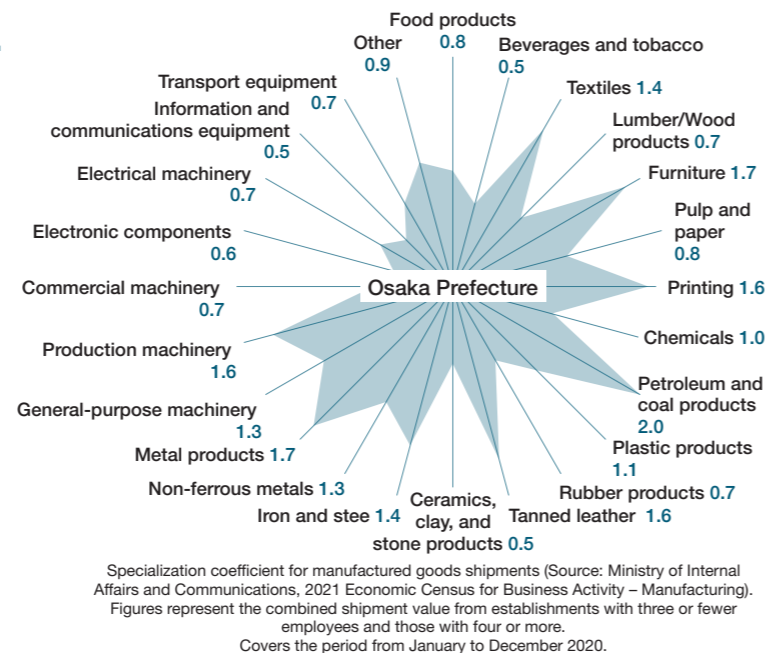
Diverse Partnerships That Power Your Growth



Osaka – Japan's Industrial Powerhouse

If it can be made, it can be made here.

Osaka, known as Japan's manufacturing hub, brings together a well-balanced mix of industries—from research and development to materials processing, mass production, and assembly—creating a stable and reliable supply chain.



Companies with World-Leading Technology and Market Share

The Ministry of Economy, Trade, and Industry has named 28 Osaka-based firms as Global Niche Top Companies, recognized for their success in highly specialized international markets.

JTEC Corporation



Used in leading synchrotron radiation facilities around the world, including SPring-8, the company's X-ray mirrors play a crucial role in boosting X-ray intensity and making important contributions to the advancement of science.

Taiyo Kogyo Corporation



With decades of experience in designing, manufacturing, and constructing membrane structures for stations, stadiums, and other buildings, the company leverages its unique technological expertise and advanced materials development to earn a world-class reputation in Japan and worldwide.

Companies founded in Osaka, succeeding worldwide



TM & © Universal Studios. All rights reserved.

Osaka: A hub for industry-academia collaboration

Universities and private companies in Osaka Prefecture conduct around **1,000** joint research and development projects annually.



The world's first automated ticket gate system

A joint development between The University of Osaka and private companies led to the world's first installation of automated ticket gates—one of Osaka's proudest achievements.

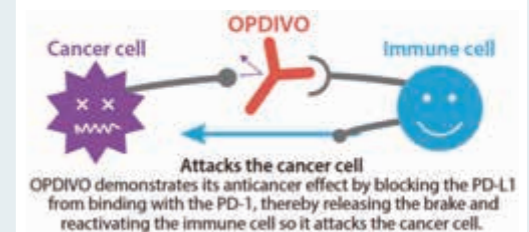
Source: Ministry of Education, Culture, Sports, Science and Technology – Status of Industry-Academia Collaboration at Universities, etc. (Joint Research)

World-leading research that began in Osaka

Opdivo

Ono Pharmaceutical Co., Ltd.

Developed by Ono Pharmaceutical Co., Ltd. from the research of Dr. Tasuku Honjo, Honorary Professor at Kyoto University, Opdivo is a cancer immunotherapy that, unlike conventional anticancer drugs, does not directly attack cancer cells but instead boosts the body's immune system to target and destroy them. This work earned Dr. Honjo the 2018 Nobel Prize in Physiology or Medicine. Opdivo is now used to treat various cancers, including lung and stomach cancer.



Exploring use cases for domestically developed quantum computers

Center for Quantum Information and Quantum Biology

In 2023, RIKEN, Fujitsu, and The University of Osaka developed a domestically produced superconducting quantum computer, which is now operational. The University of Osaka was responsible for developing the control systems and system software. One unit is housed at the Toyonaka Campus, making it the only university in Japan, the United States, or Europe to host a machine with more than 50 qubits. A consortium of over 40 companies and institutions is collaborating to explore potential applications for the quantum computer.



Creating innovation through advanced lasers

Institute of Laser Engineering

The Institute of Laser Engineering (ILE) at The University of Osaka develops cutting-edge laser technologies, including high-power systems, and promotes their application across diverse fields. It is a world leader in high-energy-density quantum science research, advancing industrial applications in areas such as energy generation, materials processing, pest control, and medical and materials diagnostics. The institute also collaborates with industries to apply its research outcomes in practical settings.

Producing Startups Ready to Take on the World

Building a Global Startup Hub City

Osaka positions startups as a pillar of its growth strategy, focusing on deep-tech fields with global competitiveness, and works to foster and support the growth of companies that can succeed worldwide and lead the next generation of industries.



A startup from Osaka aiming for the world

Microwave Chemical Co., Ltd.

The company was the first in the world to commercialize chemical production using microwaves, familiar from household microwave ovens. Today, it operates across various industries, including chemicals, steel, and metal refining, driving innovation in manufacturing processes and developing technologies to reduce CO₂ emissions through electrification, with the goal of achieving carbon neutrality.



Selected for the Osaka Prefecture Carbon Neutral Technology Development and Demonstration Project Subsidy

EX-Fusion Co., Ltd.

With the mission of “unlocking the ultimate potential of light to drive an energy revolution and create new industries through laser nuclear fusion,” EX-Fusion Co., Ltd., Japan’s only company working to commercialize a laser nuclear fusion reactor, is accelerating the development of the technologies required for its practical implementation.



Selected for the Osaka Business Development Agency’s Startup Support Program (Phase 2)

StemRIM Inc.

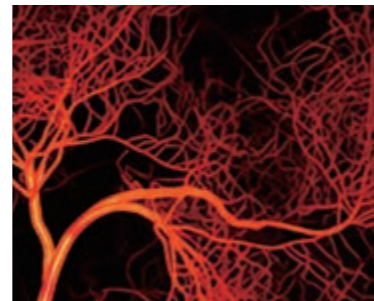
Using its proprietary Regeneration Inducing Medicine®, StemRIM Inc. mobilizes stem cells already present in the body to sites of injury or disease without removing them, promoting functional tissue regeneration through a novel mechanism of action. This technology aims to improve the quality of life for patients worldwide suffering from rare and intractable diseases, including epidermolysis bullosa.



Selected for the Osaka Prefecture Saito Bio-Venture Equipment Subsidy

Ravascular Bio Inc.

An The University of Osaka startup, the company is developing new vascular therapies using vascular endothelial stem cells—the first stem cells discovered that can form blood vessels. By creating cell-based medicines, it aims to help patients worldwide suffering from vascular diseases.



Selected for the Osaka Prefecture Drug Discovery Seed R&D Grant and the Osaka Business Development Agency’s Startup Support Program (Phase 2)

Creating University Startups Through Industry-Academia-Government Collaboration

Osaka and the Kansai region are home to many of Japan’s top universities, including The University of Osaka, Kyoto University, and Kobe University, which conduct a wide range of research that is globally competitive. Industry, academia, and government in the region are collaborating to harness this potential and promote the creation of university startups.

Research and Development Before Launch Entrepreneur Training



A platform for creating university startups, bringing together over 80 institutions in Kansai, including universities, financial institutions, and local governments.

Business Development Support at and After Startup Launch



An innovation program led by industry, academia, and government in Kansai.

Matching University Startups with Industry



A program uniting around 90 institutions in Kansai, including universities, business organizations, financial institutions, and local governments, to foster industry-academia collaboration centered on university startups.

Osaka’s New Innovation Hub

A Launchpad for Startups in Osaka and the Kansai Region

OSAKA INNOVATION HUB (Osaka Business Development Agency)

An innovation hub where entrepreneurs and engineers with global ambitions come together. Under the theme “From Osaka to the World,” it runs events and programs that support the creation and scaling of new businesses. As the central hub for Osaka, it connects startup stakeholders across the city and the Kansai region, driving business matching.



Number of annual users
19,000+
(FY2022 results)

Number of annual events
200+
(FY2022 results)

Number of projects created
500+
(Cumulative since 2013)

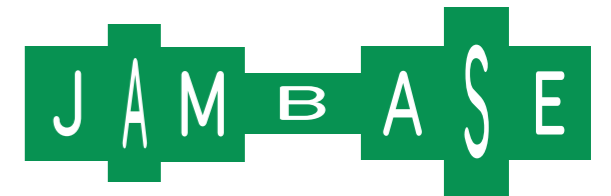
OIH Members
Players **1,200+**
Partners **450+**
(FY2022 results)

*1 Entrepreneurs (startups), individuals planning to start a business, and corporate new business managers

*2 Investors, financial institutions, large corporations and business associations, media, universities, research institutions, and support organizations

JAM BASE

A core facility within Grand Green Osaka, JAM BASE brings together people from diverse backgrounds to spark ideas and drive innovation. It supports companies, universities, research institutions, startups, and venture capital firms in transforming new ideas into practical applications and viable businesses.



Key Facilities at JAM BASE

AIST-Kansai Economic Federation Umekita Site



A joint base established by the National Institute of Advanced Industrial Science and Technology (AIST), which has extensive research seeds and networks, and the Kansai Economic Federation, which has strong corporate networks. Leveraging JAM BASE’s innovation support functions, it collaborates with universities, public testing institutions, and support organizations to promote business support and co-creation initiatives.



An open innovation hub operated by Sakura Internet, where passion sparks collaboration and transforms ideas from “what you want to do” into “what you can do,” inspiring new first steps.



The University of Osaka and its affiliated research institutions are collaborating on three projects, leveraging a location that attracts a diverse range of visitors every day. The project’s focus is on creating an avatar-based symbiotic society where everyone can participate freely, building a future through the use of personal data, and developing communities that harness brain information.



Leading Japan's Life Sciences Cluster



Osaka is home to numerous universities and research institutions, as well as a high concentration of life sciences companies. Innovation is driven by three main hubs: drug discovery, health and medical care, and regenerative medicine.



Saito

A research and development hub for life sciences, including drug discovery

Located in the hills from northern Ibaraki City to eastern Minoh City, Saito is being developed as a multifunctional city that integrates research and development facilities.

KENTO

An innovation hub for health and medical care

Industry, academia, government, and the community are collaborating to develop a world-class integrated medical industry hub and create a healthy city that leads the world in extending healthy life expectancy.

Nakanoshima

A hub for advancing the practical application and industrialization of future medicine based on regenerative medicine

Situated in central Osaka, this hub unites medical institutions and companies under one roof, fostering the creation, implementation, and sharing of next-generation medical innovations.

Saito

Saito Life Science Park is a leading hub that brings together research institutes and companies in the life sciences, including pharmaceuticals and biotechnology. It is home to organizations such as the National Institutes of Biomedical Innovation, Health, and Nutrition (NIBN), as well as other institutions with advanced research and technology development capabilities.

Incubation facilities at Saito Life Science Park

Offering access to animal testing facilities within the Saito Bio-Incubator, along with substantial rent subsidies and equipment grants, we provide comprehensive support for the research and development activities of biotech ventures.



Saito Bio-Incubator



Saito Bio Hills Center



Saito Bio Innovation Center

Company based in the incubation facilities

GeneDesign Inc. operates from both the Saito Bio Incubator and the Saito Bio Innovation Center.

In addition to a clinical trial drug manufacturing facility, the complex hosts Japan's first nucleic acid pharmaceutical research center and the nation's largest nucleic acid API development center. Through technological innovation, it drives research and development for biotech ventures and other organizations, ultimately contributing to the well-being of people, society, and the planet.

KENTO

KENTO aims to create new industries by leveraging the wealth of data and expertise within academia. With its concentration of community facilities that can serve as demonstration sites, it promotes collaboration between industry, academia, government, and the public, driving the development and testing of new products and services.

KENTO Innovation Park

The park is fostering the development of a medical cluster by attracting companies in the health and medical sectors. Alongside major corporations, it offers well-equipped, multipurpose facilities designed to accommodate businesses in health-related industries.

KENTO Innovation Park NK Building

Alongside rental laboratories and offices for health-related companies and organizations, the building offers the Turnkey Lab KENTO — a basically equipped rental lab available for hourly use.



Turnkey Lab KENTO



This integrated facility brings together a hospital, research institute, and open innovation center under one roof. The hospital houses four hybrid operating rooms and is equipped with cutting-edge medical technology, while the research institute conducts pioneering research. The site also offers both private and shared laboratories, providing an ideal environment for collaborative projects between companies and research institutions.

Contributing to the community and health as part of KENTO

Centered around the Open Innovation Center, KENTO fosters unique collaborations and initiatives that support its vision to become a model community leading the world in lengthen healthy lifespan.



Founded in 1920 as a national institution, the National Institute of Health and Nutrition has played a central role in shaping Japan's health and nutrition policies for more than a century. Drawing on its expertise in nutrition, physical activity and energy metabolism, along with its extensive health-related big data, the institute is developing social systems that support personalized approaches to diet, exercise, and sleep.

Building on its move to Osaka!

The National Institute of Health and Nutrition is accelerating collaboration with the NIBN in Saito (Ibaraki City, Osaka). Working closely with local governments and businesses, it is driving healthcare innovation across Osaka and the Kansai region.



Nakanoshima

Hospitals, companies, startups, and support organizations come together under one roof, creating a unique hub for the commercialization of healthcare innovation.

Nakanoshima Cross

Three core areas and their roles

[Practice] Future Medicine MED Center

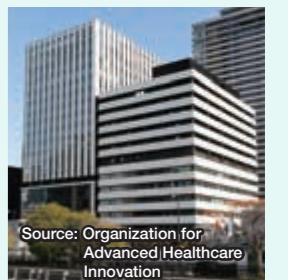
Delivers cutting-edge healthcare in collaboration with the Future Medicine R&D Center

[Innovation] Future Medicine R&D Center

A hub where companies and startups driving future medicine come together

[Collaboration] Nakanoshima International Forum

A venue for events and knowledge sharing on future medicine



Source: Organization for Advanced Healthcare Innovation

Mitsui Link Lab Nakanoshima

Well-equipped with rental wet labs, shared wet labs with experimental devices, and common areas such as offices and meeting rooms. A lounge is available for use by tenants, and we promote active communication as a center of open innovation.



CiRA Foundation

The new "my iPS" project in Nakanoshima, which supplements our main activities in Kyoto. We provide iPS cells and related technology to research institutions and companies at a reasonable price. We have established a new research facility in Nakanoshima, where we collaborate with companies to conduct joint research into developing closed-type automatic cell culture equipment for the goal of reducing manufacturing costs.



Pharmaceuticals and Medical Devices Agency (PMDA), Kansai Branch

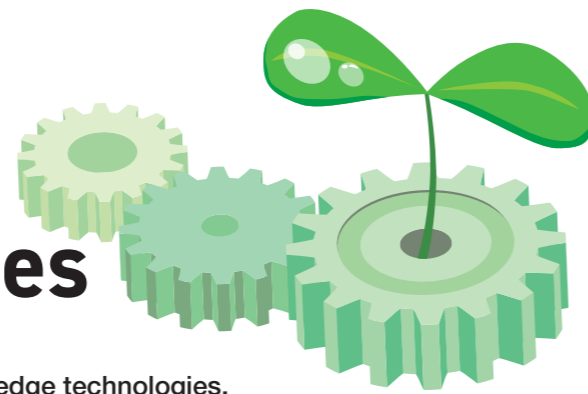
Consultations available on pharmaceuticals, medical devices, and regenerative medicine products



Emerging New Innovations and Business Opportunities

Advancing a Carbon-Neutral Society with Innovative Technologies

Osaka is a hub for carbon-neutral businesses!
Home to world-class companies and research institutes with cutting-edge technologies.



Batteries

With leading battery manufacturers driving the market from their base in Osaka, Kansai has become home to numerous companies that hold a strong share in production equipment and related technologies.

Examples of companies working on next-generation batteries

Japan's largest R&D system

Panasonic ENERGY

Moriguchi City



Japan's largest battery R&D hub is in place, with state-of-the-art facilities for next-generation materials and advanced production processes that support the growing demand for automotive lithium-ion batteries.

R&D facility established within the Suminoe plant

Redox flow batteries — long-lasting and highly safe

SUMITOMO ELECTRIC

Osaka City



Redox flow batteries are being developed and manufactured as a key technology for expanding renewable energy sources, providing grid stability, balancing peak loads, and enhancing energy resilience.

Redox flow batteries — long-lasting, safe, and designed for grid-scale storage

Hydrogen and related fields

Kansai is home to a large concentration of hydrogen-related companies, including industry leaders with Japan's top market share.

Examples of companies leading in hydrogen

A pioneer of hydrogen technology in Japan

Iwatani

Osaka City



Hydrogen fuel cell ship "Mahoroba"

Since 1941, the company has been involved in hydrogen, from production and supply chain development to new applications, helping expand its use across Japan. In Sakai City, it operates one of the world's largest liquid hydrogen production plants.

The Bay Area is advancing the development of hydrogen and ammonia supply chains to support carbon neutrality, while also exploring large-scale production of e-methane.



The Osaka Bay Area

Growth sectors (energy efficiency, perovskite solar cells, SAF)

Efforts are underway to put advanced technologies such as storage batteries and hydrogen into practical use and expand them into industrial applications.

Examples of companies advancing cutting-edge technologies

Promoting energy efficiency

DAIKIN

Osaka City



Technology and Innovation Center (TIC), Settsu City

A global leader in air-conditioning systems, driving the global adoption of energy-efficient products and helping build a more sustainable future.

Flying on used cooking oil

COSMO

Sakai Refinery



Under construction at Cosmo Oil's Sakai Refinery

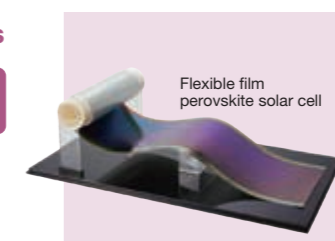
To achieve Japan's first domestic mass production of SAF, Cosmo Oil, JGC Holdings, and Revo International established Sapphire Sky Energy. A new SAF production facility is being built at the refinery, with plans to begin producing approximately 30,000 kiloliters annually using 100% waste cooking oil as feedstock from spring 2025.

Thin, light, and flexible next-generation solar cells

SEKISUI

Osaka City

Film-type perovskite solar cells are being developed and tested for practical use as a promising next-generation technology. The local R&D facility also features an Innovation Center that promotes the development of new ideas and technologies.



Flexible film perovskite solar cell



Minase Innovation Center

Universities, research institutes, and testing organizations

Home to leading academic and research institutions working together to advance carbon neutrality.

Universities and research institutes advancing cutting-edge technology

AIST

Ikeda City



National Institute of Advanced Industrial Science and Technology (Kansai Center)

The Kansai Center of the National Institute of Advanced Industrial Science and Technology (AIST) is conducting research and development on high-capacity, compact lithium-ion batteries, as well as next-generation storage batteries, spanning the entire spectrum from basic science to practical applications.

LIBTEC

Ikeda City



Consortium for Lithium-Ion Battery Material Evaluation and Research Center

The center supports the development of new lithium battery materials by forecasting market trends, creating standard battery models, and developing and analyzing material evaluation methods.

大阪公立大学
Osaka Metropolitan University

Sakai City

The Kansai Center conducts fundamental and academic research on all-solid-state batteries, while also fostering and training the next generation of researchers.

Osaka Metropolitan University – Research Promotion Organization, Research Center for All-Solid-State Batteries



ORIST
大阪産業技術研究所
Osaka Research Institute of Industrial Science and Technology

Osaka City / Izumi City

As a hub for knowledge and technology supporting manufacturing and industrial innovation, the center fosters small and medium-sized enterprises, drives economic and industrial growth in Osaka, and improves residents' quality of life. It carries out testing, research, and other initiatives related to industrial technology.



Osaka Research Institute of Industrial Science and Technology (Izumi Center)



NLAB



MIDDLE Chamber Advanced Technology Evaluation Building

NITE

National Institute of Technology and Evaluation (NITE)

Osaka City

The institutes support Japanese companies in developing and commercializing storage battery systems by providing testing services at the National Laboratory for Advanced Battery Testing (NLAB), the world's largest facility of its kind.

Available Incentive Programs in Osaka, Tailored to Your Needs

Establishing a new base of operations

Subsidy for business startups of foreign-affiliated companies

Foreign-affiliated companies that establish headquarters functions in Osaka Prefecture are eligible for subsidies to offset part of their investment expenses.

Eligible applicants:

Foreign-affiliated companies moving into Osaka Prefecture to set up headquarters functions.

*Headquarters functions include divisions such as planning and research, information processing, research and development, international business, information services, and other administrative functions.

Incentives:

[Acquiring building] 5% of the acquisition costs of building and depreciable properties. (up to 100 million yen*)

[Leasing building] One-third of building rent for 24 months from the month following the month when the subsidy requirements are fulfilled. (up to 60 million yen*)

*The maximum amount is determined based on the number of full-time employees.

Applicable areas: Entire Osaka Prefecture



Local tax incentives for foreign financial corporations

Foreign financial corporations entering Japan and Osaka City for the first time and establishing operations in Osaka City to conduct asset management or related businesses may be eligible for full exemption from corporate inhabitant tax and corporate enterprise tax.

Eligible applicants:

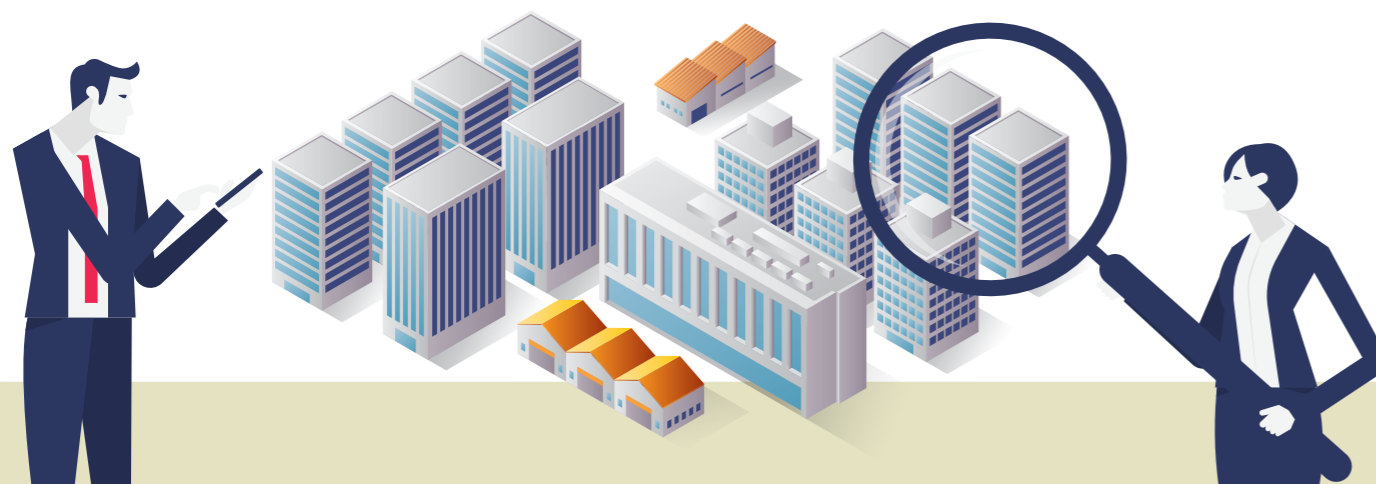
Foreign financial corporations engaged in asset management or fintech business.

Incentives:

Corporate Inhabitant Tax and Corporate Enterprise Tax, reduced in proportion to the share of asset management and related activities, are exempt for up to 10 years.

Tax-exempt Area: Osaka City

*Corporations making a secondary expansion into Osaka are also eligible for a subsidy that covers part of their necessary expenses. For more details, please check the QR code.



Relocating or expanding headquarters functions

◆ Regional Headquarters Enhancement Tax Incentive

The national government offers corporate tax reductions for companies that relocate their headquarters from Tokyo's 23 wards to regional areas (relocation projects) or expand their headquarters functions in regional areas (expansion projects).

Eligible applicants: Businesses relocating or expanding their headquarters functions, including offices, research facilities, and training centers.

Incentives: These include office-related incentives such as special depreciation or tax credits on the cost of acquiring buildings and facilities, employment incentives offering corporate tax credits for hiring new staff, and debt guarantees provided by the Organization for Small & Medium Enterprises and Regional Innovation, Japan (SMRJ).

Applicable areas: Areas designated under the Regional Revitalization Plan as Regional Vitalization Areas (for relocation and expansion projects) and Semi-Regional Vitalization Areas (for relocation projects).



Want to Launch a Project in New Energy or Life Sciences?

◆ Special Growth Zone Tax Incentives

Companies entering designated growth zones in Osaka Prefecture and pursuing advanced projects in fields such as new energy or life sciences may qualify for significant tax reductions—up to full exemption from real estate acquisition tax, prefectural corporate tax, and enterprise tax.

Eligible applicants: Businesses operating in the fields of new energy or life sciences, as well as those supporting both sectors.

Incentives: Real estate acquisition tax: up to a full exemption (reduced in proportion to the share used for growth industry projects).

Corporate inhabitant and enterprise taxes: up to five years tax-free, followed by a 50% reduction for the next five years (reduced in proportion to the increase in regular employment).

Eligible area: Special Growth Industry Cluster Zone



Set up or expand a factory or research facility (SMEs)

◆ Industrial Cluster Promotion Tax Program

To promote industrial clustering in Osaka Prefecture, the real estate acquisition tax is reduced for factories, research facilities, and related land or buildings.

Eligible applicants: Small and medium-sized enterprises that acquire factories, research facilities, warehouses, or related land (companies or individuals with a capital or total investment of 100 million yen or less.)

*Applies only to those who have received preferential measures from the municipality for acquiring the eligible property.

Incentive: Up to 50% reduction in real estate acquisition tax on eligible properties (capped at 200 million yen).

Eligible areas: Industrial cluster promotion zones (for warehouses, limited to port districts and other areas designated under the City Planning Act).



◆ In-Prefecture Investment Promotion Subsidy

Osaka Prefecture provides subsidies to companies that build new factories or research and development facilities, or expand and renovate existing ones.

Eligible applicants: Small and medium-sized enterprises engaged in the construction or renovation of factories or research and development facilities. (For manufacturing businesses, this exclusion applies to certain occupations, and eligibility is limited to companies or individuals with 300 or fewer employees or a capital of 300 million yen or less.)

Incentive: Covers 5% of the cost of buildings and equipment (10% for companies with their head office, factory, or research and development facility in Osaka Prefecture), up to 30 million yen.

Applicable areas: Industrial cluster promotion areas (factories and R&D facilities), as well as municipalities with investment promotion plans for R&D facilities in advanced sectors such as life sciences and new energy.



Looking to invest in new buildings or equipment?

◆ Act on the promotion of future regional investment

The national government provides focused support for regional economy advancement projects, which create high added value by leveraging regional strengths and deliver significant economic benefits to local businesses.

Eligible applicants: Businesses undertaking regional economic driver projects that align with the regional characteristics defined in each Basic Plan.

*Examples include growing manufacturing sectors, though the focus areas vary by plan.)

Incentives: Corporate tax incentives such as special depreciation or tax credits for capital investment in buildings, machinery, and other equipment (under the Regional Future Investment Promotion Act), along with access to fixed-rate loans from the Japan Finance Corporation, among others.

Applicable areas: Areas designated in the Basic Plan jointly developed by Osaka Prefecture and its municipalities.



Organizations Supporting Business in Osaka

O-BIC(Osaka Business and Investment Center)

A detailed support system that targets your specific needs.



Examples of the Wide Range of Supports

- General information on Osaka in English and Japanese
- Real estate information regarding office space, warehouses, factories, and residential properties
- Introductions to outsourcing services for processes such as acquiring resident status for employees and corporate registration
- Information on investment incentives offered by Osaka Prefecture and Osaka City
- Introductions to interpreters, translators, market researchers, lawyers, genera/tax accountants, and other helpful enterprises
- Assistance in meeting potential business partners through websites, meetings, and seminars

Support Program for Foreign Companies

- Subsidy for registration cost of establishing a new head office or branch: up to 100,000 yen per applicant
- Subsidy for cost of obtaining status of residence: up to 50,000 yen per applicant

TEL : +81-6-6944-6298
Email : o-bic@osaka.cci.or.jp
URL : <http://o-bic.net/>



Temporary Offices

IBPC Osaka and JETRO Osaka have set up free temporary offices for foreign companies considering investment in Osaka.

IBPC (International Business Promotion Center) Osaka

TEL : +81-6-6615-7130
Email : info@investosaka.jp
URL : <https://www.investosaka.jp/eng/>



JETRO Osaka

TEL : +81-6-4705-8660 (Direct) -8603 (Representative)
Email : OSD@jetro.go.jp
URL : <http://www.jetro.go.jp/en/invest>



Support for Development and Related Issues

Osaka Research Institute of Industrial Science and Technology (ORIST)

ORIST is a public research institute that supports manufacturing businesses with advanced technical expertise. Backed by top-tier staff, state-of-the-art equipment, and extensive research achievements, it is recognized as one of Japan's leading centers for industrial support. The institute helps companies apply cutting-edge technologies and know-how, and also provides on-site incubation facilities.

URL <https://orist.jp/en/>



Software Industry Plaza TEQS

Operated by the Osaka Industrial Bureau, Software Industry Plaza TEQS is a tech-business support center that empowers innovators tackling real-world challenges. It combines incubation facilities with acceleration programs that help entrepreneurs build businesses, along with robust proof-of-concept support in sectors such as IoT, AI, and robotics. From ideation and development through testing and demonstration, TEQS provides comprehensive, end-to-end support—all under one roof.

URL <https://teqs.jp/en/>



Pharmaceuticals and Medical Devices Agency (PMDA)

PMDA offers regulatory science consultations on nonclinical studies and clinical trial planning in the early stages of development. It also provides video-conference advice on clinical trials and application documents. In addition, PMDA conducts on-site and document inspections to ensure that pharmaceutical manufacturing facilities and quality management systems comply with GMP standards, supporting the production of safe, high-quality products.

URL <https://www.pmda.go.jp/english/index.html>



National Institute of Technology and Evaluation (NITE)

NITE supports five key areas: product safety, chemical management, biotechnology, conformity assessment, and international evaluation standards. It conducts testing, analysis, and inspections of industrial products, while also gathering, evaluating, and sharing information on product quality and safety.

URL <https://www.nite.go.jp/en/index.html>



Osaka Foreigner Recruitment Support Center

The center offers comprehensive support for companies seeking to hire foreign talent. It works with businesses to identify challenges and recruitment needs, offers practical advice, and connects them with the right support organizations to ensure a smooth hiring process.

URL <https://www.gaikokujinzai-osaka.jp/>



Core Talent Employment Strategy Desk (Osaka Pro Talent Program)

This desk supports companies that tackle challenges such as market expansion, overseas operations, and business succession. It helps clarify the ideal talent profiles needed for growth, connecting businesses with highly skilled professionals to drive innovation and transform management.

URL <https://www.projinzai.osaka.jp/>



SME Recruitment Concierge

We provide comprehensive support for small and medium-sized businesses, from strategic hiring advice and practical solutions to connecting you with the right support companies and partner organizations. Our one-stop service streamlines the entire recruitment process, making it easier and more efficient.

URL <https://jinzai-platform.jp/index.html>



Osaka Innovation Hub (OIH)

The Osaka Innovation Hub is a dynamic center where entrepreneurs and innovators come together to tackle global challenges. Through events and programs, OIH sparks new business creation and growth, while fostering the exchange of people, companies, and ideas. It also helps build communities and supports the successful commercialization of business plans.

URL <https://www.innovation-osaka.jp/>



Osaka Business Innovation Center (Osaka Sangyo Sozokan)

The center offers a wide range of support for small and venture businesses, including expert management consultations, business seminars, trade fairs, and networking events. Partnering with other support organizations provides one-stop solutions to help companies address challenges and grow their businesses.

URL <https://www.sansokan.jp/>



Monozukuri Business Center Osaka (MOBIO)

MOBIO is one of Japan's largest support hubs for manufacturing SMEs. It offers a wide range of services, including a permanent exhibition hall, business matchmaking (partnership development), market expansion support, industry-academia collaboration, intellectual property consulting, and business seminars—all designed to help manufacturing companies grow and succeed.

URL <https://www.m-osaka.com/en/>



Hiring Challenges

Business Matching (Partnership Development)