

## *East Osaka Area*

### Hirakata City

- 44. Pedestrian Bridge to See Hirakata T-SITE
- 45. Kyokaido Road With a View of Hirakatashuku Kagiya Museum

### Moriguchi City

- 46. Kyokaido Road to See Bunroku-tsutsumi Embankment and Moriguchijuku

### Neyagawa City

- 47. Uchiagegawachisui-ryokuchi Green Space to View Cherry Blossom Trees

### Kadoma City

- 48. Sunago-suiro Waterway Side Road to See Cherry Blossoms Along the Waterway

### Shijonawate City

- 49. Mizubeshizenen Water Park With a View of Muroike Pond

### Katano City

- 50. Hoshida Park's Hoshi no Buranko Overlooking the Fall Foliage
- 51. Kannon-iwa Rock on the Summit of Mt. Kono Overlooking Keihanshin Area's Townscape

### Daito City

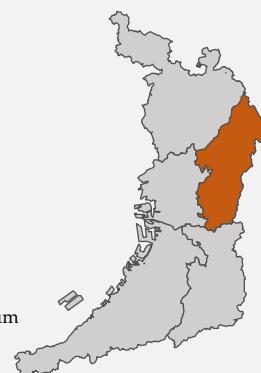
- 52. Summit of Mt. Iimori Overlooking Osaka Prefecture
- 53. Goryobashi Bridge Area to See Goryo Waterway and Goryo Sugawara Shrine

### Higashiosaka City

- 54. Hotel Seiryu, Higashi Osaka Sky Terrace Overlooking the Sunset of Osaka Plain
- 55. Hanazono Rugby Stadium With a View of Higashiosaka Civic Art Center
- 56. Kuragaritoge Pass to View Kuragaritoge-Narakaido Road
- 57. "Bokura no Hiroba" in Narukawa Park Overlooking Osaka Plain

### Yao City

- 58. Kyuhoji Jinaimachi With a View of Kenshoji Temple Roof and Historical Townscape
- 59. Mizunomi-Jizoson Overlooking Osaka Plain
- 60. Promenade Overlooking Shionjiyama Kofun
- 61. Village Road to See the Satoyama Landscape of Kodachi Area







#### 44. *Pedestrian Bridge to See Hirakata T-SITE*

The shopping mall in front of Hirakatashi Station has a unique structure which looks like stacked blocks. This building is designed to look like combined glass cubes, and different sceneries can be experienced during various times such as morning, daytime and nighttime.

▼19-14 Okahigashi-cho, Hirakata City／

Directly connected to Hirakatashi Station on the Keihan Main Line

45.

*Kyokaido Road With a View of  
Hirakatashaku Kagiya Museum*

*Hirakata City*





## 46. *Kyokaido Road to See Bunroku-tsutsumi Embankment and Moriguchijuku*

TOYOTOMI Hideyoshi who built the castles in Osaka and Fushimi maintained Bunroku-tsutsumi Embankment along Yodogawa River to connect two castles with the shortest route, so this embankment road became Kyokaido Road. You can feel traces of the Bunroku-tsutsumi Embankment's history around the Moriguchi area.

### ▼2 Hommachi, Moriguchi City／

3 min walk from Moriguchi Station on the Osaka Metro Tanimachi Line

5 min walk from Moriguchishi Station on the Keihan Main Line

### *Moriguchi City*



Hirakatashuku was the 56th post town counting from Tokaido-Shinagawajuku, and you can feel the atmosphere of the Kyokaido Road, which flourished as a port for transportation along the Yodogawa River. Kagiya Museum uses a building that had been a Japanese style restaurant until 1997. Currently, it is used for various events as the only museum that introduces the history of Hirakatashuku.

### ▼10 Tsutsumicho, Hirakata City／

5 min walk from Hirakata-koen Station on the Keihan Main Line





## 47. *Uchiagegawachisui-ryokuchi Green Space to View Cherry Blossom Trees*



Uchiagegawachisui-ryokuchi Green Space was built to adjust the flow rate of both the Neyagawa and Uchiagegawa Rivers during floods. Inside the green space, a stream connects the upper and lower ponds and wild birds fly around, allowing you to enjoy this space that coexists with water. There is an event that colorfully illuminates about 200 cherry blossom trees in the spring. You can enjoy the “Minamozakura,” which is a phenomenon that occurs when the cherry blossoms are reflected into the water. That makes them look like they are blooming upside down.

▼25 Uzumasa-sakuragaoka, Neyagawa City /  
25 min walk from Neyagawashi Station on the Keihan Main Line

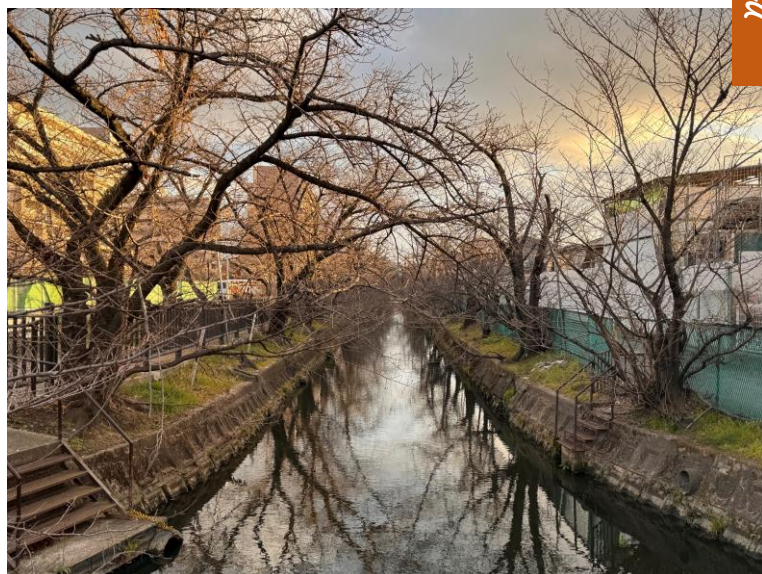
*Neyagawa City*



## 48. Sunago-suiro Waterway Side Road to See

### Cherry Blossoms Along the Waterway

Approximately 200 Yoshino cherry trees bloom every spring along Sunago-suiro Waterway running vertically across Mitsushima in Kadoma City. It is the best cherry blossom viewing spot in Kadoma City, and its scenery has been selected as one of the “Top 100 Greenery Places in Osaka.” Members of the preservation society of Sunago-suiro Waterway operate a boat to view the cherry blossoms, so it's crowded with many people who come to enjoy the cherry blossoms during the viewing season.



▼6 Mitsushima, Kadoma City／

16 min walk from Kadoma-minami Station on the Osaka Metro Nagahori Tsurumi-ryokuchi Line

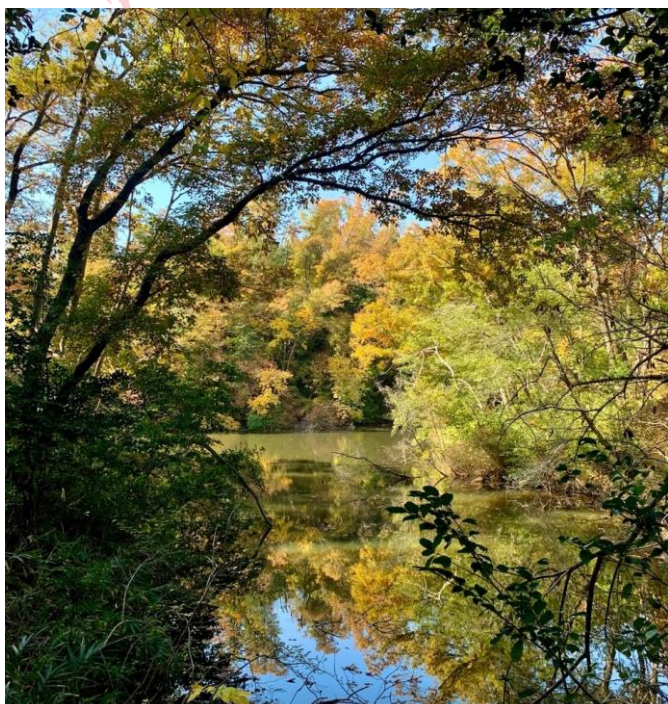
Kadoma City







## 49. *Mizubeshizenen Water Park With a View of Muroike Pond*



Around Muroike Pond located in the southern part of Muroike Park, there are two promenades which are popular as the Mizubeshizenen Water Park. With the open view of the pond surrounded by greenery, you can enjoy the beautiful nature of each season, such as various flowers in the spring and foliage in the fall.

▼ Minamino, Shijonawate City /

60 min walk from Shijonawate Station on the JR Gakkentoshi Line / Transfer to the Bus bound for Satsukigaokakoen Stop from Shijonawate Station on the JR Gakkentoshi Line, (Weekday) get off at Ousaka Stop, then walk 10 min/ (Weekend, holiday) get off at Midorinobunkaen Stop, then short walk

*Shijonawate City*



## 50. Hoshida Park's Hoshi no Buranko Overlooking the Fall Foliage

Hoshi no Buranko (Star Swing) is one of the largest wooden suspension bridges in Japan with a length of 280m and a highest ground height of 50m. From the observatory, you can see Yodogawa River and Mt. Tennozsan through the fall foliage while looking at Hoshi no Buranko. You can also enjoy the colored forest, suspension bridge and distant scenery all at once. It represents Osaka as a fall foliage spot.

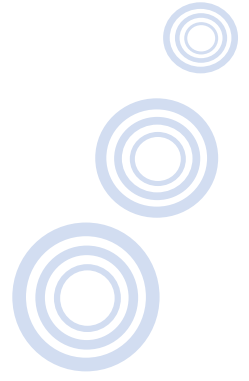
▼Hoshida, Katano City /

55 min walk from Kisaichi Station on the Keihan Katano Line

Katano City







*Katano City*

## *51. Kannon-iwa Rock on the Summit of Mt. Kono*

### *Overlooking Keihanshin Area's Townscape*

From the gigantic Kannon-iwa Rock on the summit of Mt. Kono, you can see the panoramic view of Osaka Plain, Abeno Harukas, Akashi-Kaikyo Bridge, Kyoto Tower and Mt. Wakakusa. There are multiple hiking routes to Mt. Kono, and it is popular as a hiking course where you can see the breathtaking view.

▼Kuraji, Katano City／

55 min walk from Tsuda Station on the JR Gakkentoshi Line



## *52. Summit of Mt. Iimori Overlooking Osaka Prefecture*

Mt. Iimori straddles Daito City and Shijonawate City and you can see the Osaka Plain from the summit. You will not only see beautiful scenery, but also feel its history by being able to see all territories that MIYOSHI Nagayoshi ruled at that time. In addition, the hiking course where you can walk in the historical mountain is also popular.

▼Hojo, Daito City／

100 min walk to the summit from Nozaki Station on the JR Gakkentoshi Line

*Daito City*



## 53. Goryobashi Bridge Area to See

### Goryo Waterway and Goryo Sugawara Shrine



A waterway once ran crisscrossing the village in the Goryo area located in the northwestern part of Daito City, and people and crops were often transported back and forth by using barges.

At the part of the waterway that remains today, you can experience riding a boat and enjoy the historic townscape such as old folk houses and Goryo Sugawara Shrine.

#### ▼1 Goryo, Daito City／

Transfer to Kintetsu Bus at Suminodo Station on the JR Gakkentoshi Line, get off at Goryo-Higashi Stop, then walk 7 min







## 54. *Hotel Seiryu, Higashi Osaka Sky Terrace Overlooking the Sunset of Osaka Plain*



Higashiosaka Sky Terrace located on the 4th floor of Hotel Seiryu built at the foot of Mt. Ikoma is near the prefectural border between Osaka and Nara. The height of the terrace is equivalent to 70 floors above ground. You can enjoy the spectacular scenery of the Osaka Plain with the sunset in the background and the romantic atmosphere created by the car taillights on Hanshin Expressway at night.

▼1-11-12 Kamiishikiricho, Higashiosaka City /  
5 min walk from Ishikiri Station on the Kintetsu Nara Line

*Higashiosaka City*



## 55. Hanazono Rugby Stadium With a View of Higashiosaka Civic Art Center



Hanazono Rugby Stadium is the Mecca of high school rugby as Japan's first rugby-only field. There is a monument that symbolizes the rugby history and tradition in front of Hanazono Rugby Stadium. You can see the beautiful contrast of the blue sky with white clouds and the building when you look at the Higashiosaka Civic Art Center through the monument in front of Hanazono Rugby Stadium.

▼7-10 Yoshida, Higashiosaka City /  
8 min walk from Higashi-Hanazono Station on the Kintetsu Nara Line

## 56. Kuragaritoge Pass to View Kuragarigoe-Narakaido Road

Kuragarigoe-Narakaido is a road known as the shortest route connecting Osaka and Nara, and it used to be bustling with goods transportation and Sankin-kotai, which is one of the Japanese administrative systems in the Edo period to make Daimyo (lords) live in Edo and their domain alternately for a year. The cobblestone road of Kuragaritoge Pass located at the prefectural border was paved by Koriyama Domain in the Edo period. You can feel the trace of the past, and the steep hills and roads too narrow to pass by bicycle are also called the best "Kokudo" (difficult roads) in Kansai.

▼Higashi-toyouracho, Higashiosaka City /  
60 min walk from Nukata Station on the Kintetsu Nara Line

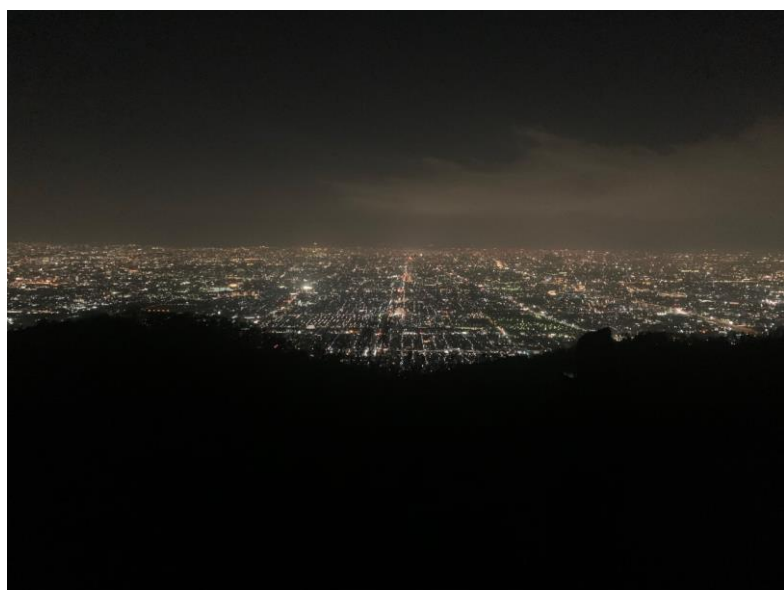






## 57. "Bokura no Hiroba" in Narukawa Park

### *Overlooking Osaka Plain*



"Bokura no Hiroba Square" is located at the highest point of the vast Narukawa Park. You can enjoy magnificent panoramic views such as from Osaka Plain to Osaka Bay, Mt. Rokko, Awaji Island, and Mt. Katsuragi and Mt. Kongo to the south. On a sunny day, an impressive scenery of the sky, ground, and sea spreads out before your eyes. You can see the ground colored by the sunset in the evening. The lights of the city shine brightly as if it were a painting, making it heartwarming.

▼Kamishijocho, Higashiosaka City／

70 min walk from Hiraoka Station on the Kintetsu Nara Line

*Higashiosaka City*



## 58. Kyuhoji Jinaimachi With a View of Kenshoji Temple Roof and Historical Townscape



Kyuhoji Jinaimachi has a history of over 450 years and was established in the late Muromachi Period with Kenshoji Temple as the center. Although it was affected by the Yamatogawa River Rerouting and Hoei Earthquake, the town remains unchanged with the grid pattern since the Edo Period. You can experience the atmosphere as if you returned to the past. From this view spot, you can see the historical townscape such as Asano Residence, which was selected as “YAO KIRARI” (landscape resource in Yao City), with a background of Kenshoji Temple Roof.

▼5 Kyuhoji, Yao City／

8 min walk from Kyuhoji Station on the JR Yamatoji Line

Yao City







## 59. Mizunomi-Jizoson Overlooking Osaka Plain



Mizunomi-Jizoson is located halfway up Ju-santoge Pass, and Jizo Bodhisattva is enshrined in the temple hall. There is also a spring called “Kobosui-water” beside the Jizo Hall. You can overlook beautiful sceneries such as the Osaka Plain, rural landscapes, cityscapes, Osaka Bay, and Kansai International Airport under the blue sky and clouds. The scenery completely changes at night, and you can see the beautiful nightscape that unfolds in front of you.

▼Kodachi, Yao City／

50 min walk from Hattorigawa Station on the Kintetsu Shigi Line







## 60. Promenade Overlooking Shionjiyama Kofun

Shionjiyama Kofun (tomb) is a largest keyhole-shaped kofun in Nakakawachi and was built in the middle of the Kofun period. It is said to be the tomb of the ruler of this area. It is one of the largest kofuns in Japan and is a rare kofun you can actually climb. The two large paulownia trees bloom flowers in the spring and provide a beautiful scenery with a surrounding waterside environment.

▼5 Otake, Yao City／

Transfer to Kintetsu Bus at Kawachiyamamoto Station on the Kintetsu Osaka Line, get off at Otake Stop, then walk 7 min



## 61. Village Road to See the Satoyama Landscape of Kodachi Area

Kodachi area is located on the most mountainside as a village of former Takayasu, and old folk houses are built along the mountainous terrain.

It is a Satoyama Landscape characterized by old folk houses built on a stone wall. You can enjoy the various sceneries such as old folk houses, stone wall, and Osaka Plain spreading out in the opposite direction with Mt. Takayasu in the background.

▼4 Kodachi, Yao City／

25 min walk from Hattorigawa Station on the Kintetsu Shigi Line