



Osaka City Area

Kita Ward

18. Osaka Station "Tenku-no-Noen" to See the Sunset Between the Buildings
19. Sky Lobby in Osaka Umeda Twin Towers North to See the Starting Point of Midosuji (Umeda Intake Tower)
20. LUCUA Overlooking JR Osaka Station Platform
21. Umeda Sky Building "Kuchu Teien" Overlooking the "Skyscrapers in Central Osaka"
22. Umekita Hiroba With a View of Umeda Sky Building
23. Nakanoshima Park to See Osaka City Central Public Hall and Skyscrapers

Chuo Ward

24. River Station Hachikenya With a View of Tenjinbashi Bridge and Night Lights
25. Temmabashi Bridge With a View of the Scenery Along Okawa River
26. KKR Hotel Osaka Terrace With a View of the Tower of Osaka Castle

Nishi Ward

27. Chuo-Odori Main Street to See Awaza Junction

Miyakojima Ward

28. Gempachibashi Bridge to See Gimbashi Bridge, Okawa River and Osaka Castle

Taisho Ward

29. Ochiaikami Ferry to See Kizugawa-Suimon Sluice Gate

Minato Ward

30. Chuo-Tottei Diamond Point to See Osaka Bay and Sunset
31. Hydrophilic Seawall of Chikko in Minato Ward to See Minato Ohashi Bridge
32. Tempozan Ferry to View Tempozan Giant Ferris Wheel

Tennoji Ward

33. Sammon Gate With a View of Shitennoji Temple
34. Tennoji Park(TEN-SHIBA) With a View of Abeno Harukas
35. Genshojizaka Hill to View Historical Scenery

Naniwa Ward

36. Shinsekai With a View of Tsutenkaku Tower
37. Minatomachi River Place, Dotonbori River View From Fukaribashi Bridge
on the Osaka Namboku City Road
38. Parks Garden Overlooking the Oasis in Downtown

Yodogawa Ward

39. Yodogawa River Riverbed to View the Nightscape of Umeda

Abeno Ward

40. Abeno Harukas Observatory "Harukas 300" Overlooking Osaka Plain
41. Hankai Railway "Abeno Stop" With a View of Abeno Harukas

Suminoe Ward

42. Sakishima Cosmo Tower Observatory Overlooking Osaka Bay

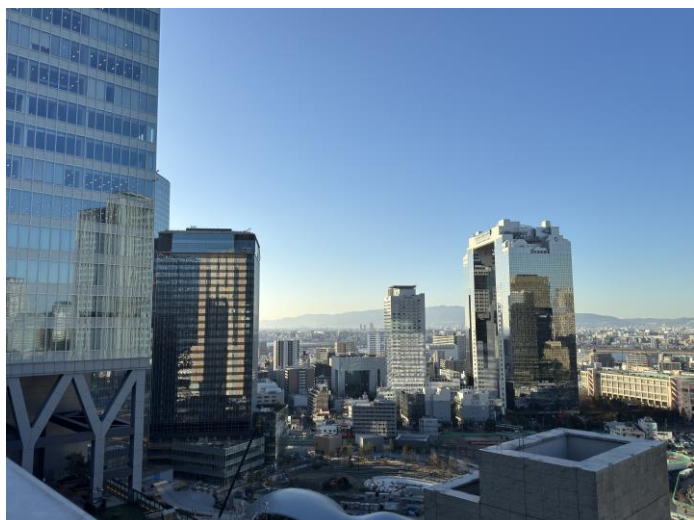
Konohana Ward

43. Universal Studios Japan With a View of the Townscape Inside the Park





18. Osaka Station "Tenku-no-Noen" to See the Sunset Between the Buildings



Do you know "Tenku-no-Noen (Farm in the Sky)"? There is a small farm when you go upstairs from the 11th floor of the North Gate Building in the JR Osaka Station. Despite being in the center of the city, it is a precious spot where you can observe vegetables growing. You can also see the skyscrapers of Nishi-Umeda and the vivid sunset over Mt. Rokko with the Umeda Sky Building in the foreground.

▼14F Osaka Station City North Gate Building, 3 Umeda, Kita Ward, Osaka City
(Access 14th floor by stairs from the 11th floor)／
Directly connected to JR Osaka Station

Kita Ward

19.

Sky Lobby in Osaka Umeda Twin Towers North to See the Starting Point of Midosuji (Umeda Intake Tower)

In the back of the Sky lobby's large window glass on the 15th floor of the Osaka Umeda Twin Towers North, the view of Midosuji stretching southward spreads out starting from the "Umeda Intake Tower." It was designed by "Togo MURANO," an architect from Osaka. Many people take use of the must-see huge elevator, which goes to the Sky lobby.

▼15F Sky Lobby, Osaka Umeda Twin Towers North, 8 Kakuda-cho, Kita Ward, Osaka City /
3 min walk from Hankyu Osaka-umeda Station



Osaka City



20.

LUCUA Overlooking JR Osaka Station Platform

A dynamic streamlined dome covers the area above JR Osaka Station's platform. You can see the frame of the "Truss structure" from LUCUA, the shopping mall directly connected to JR Osaka Station, and also enjoy the entire view of the huge terminal station where many people come and go, with the dynamic structure in the background.

▼5F LUCUA, 3-1-3 Umeda, Kita Ward, Osaka City /
Directly connected to JR Osaka Station

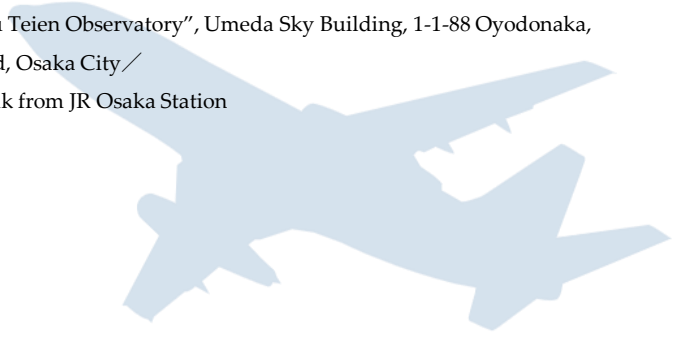
21. Umeda Sky Building "Kuchu Teien"

Overlooking the "Skyscrapers in Central Osaka"



Kuchu Teien (Floating garden) is designed taking the hint from ruins of the Mayan civilization, "Kuchu Teien Fantasy." It is built by the "Lift-up" technique, which is an advanced construction method that lifts using wires from the rooftops of two buildings. This observation facility where you can see the skyscrapers so close is rare. "Kuchu Teien" is a world-class view spot with distinctive views in all directions, such as mountains and rivers that divide the city and the sun that sets over the ocean.

▼"Kuchu Teien Observatory", Umeda Sky Building, 1-1-88 Oyodonaka, Kita Ward, Osaka City /
9 min walk from JR Osaka Station





22. Umekita Hiroba With a View of Umeda Sky Building

There is a massive square in front of the central north exit of JR Osaka Station. You will immediately see Umeda Sky Building when you visit the square. Many people come and go and sometimes stop for a break. We could say it is the city landscape including these movements. Throughout the year, many types of events are held in Umekita Hiroba Square, so it is one of the attractive points to enjoy various beautiful scenery depending on the season you visit and timeframe.

▼4 Ofuka-cho, Kita Ward, Osaka City／

2 min walk from JR Osaka Station

23.

*Nakanoshima Park to See
Osaka City Central Public Hall
and Skyscrapers*



Nakanoshima Park is the waterside park and located between Dojimagawa River and Tosaborigawa River. It is familiar to local people as a downtown greenery oasis. You can see Nakanoshima's sophisticated landscape, which has old and new buildings such as Nakanoshima Central Public Hall, a historical building represents Osaka City, and the Nakanoshima skyscrapers in west of Midosuji. There is also one of Osaka's leading rose gardens near Nakanoshima Park, so you can see the wonderful scenery with park greenery.

▼1 Nakanoshima, Kita Ward, Osaka City／

Short walk from Naniwabashi Station on the Keihan Nakanoshima Line



24. River Station Hachikenya With a View of Tenjinbashi Bridge and Night Lights



River Station Hachikenya was built in 2009 as a base for the exchange of people and things in Osaka, the aqua metropolis. You can enjoy food, tourism, and going out as much as you want. From Hachikenya, you can see the light up events on Tenjinbashi Bridge from sunset to 11 p.m. The concept of the event is “flickering lights.” The lights give the image of lanterns highlighting the beautiful bridge arches, making you imagine the Tenjin festival, allowing you to see the fantastical view with the night lights.

▼1-2 Kitahamagishi, Chuo Ward, Osaka City／

3 min walk from Temmabashi Station on the Keihan Main Line

Chuo Ward



25.

*Temmabashi Bridge
With a View of
the Scenery Along Okawa River*

Temmabashi Bridge is one of the “Naniwa Three Major Bridges,” which are Temmabashi, Tenjinbashi and Naniwabashi Bridges from the upstream. The shape of the Temmabashi Bridge is known as “birds spreading their wings freely.” You can enjoy various panoramic views that represent the aqua metropolis Osaka such as the skyscrapers, Tenjinbashi Bridge with a beautiful arch design made of steel, water bus and the nature along the Okawa River. The illuminations showing the Temma Kiriko pattern (being the birthplace of Temma glass) is also recommended.

▼Temmabashi-kyomachi, Chuo Ward, Osaka City／

2 min walk from Temmabashi Station on the Keihan Main Line

26.

*KKR Hotel Osaka Terrace
With a View of
the Tower of Osaka Castle*



From the banquet halls of KKR Hotel Osaka and the terrace on the 5th floor, you can see the stunning tower of Osaka Castle closely from an elevated position. Osaka Castle illuminates during the nighttime, so if the timing is good, you can enjoy the limited time illumination events from the guest rooms.

▼2-24 Bamba-cho, Chuo Ward, Osaka City／

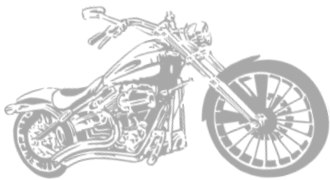
10 min walk from Morinomiya Station on the Osaka Metro Chuo Line, Nagahori Tsurumi-ryokuchi Line and JR Osaka Loop Line

27. Chuo-Odori Main Street to See Awaza Junction



The overlapping junction of Hanshin Expressway Route 16 Osakako Line is the starting point of the Route 3 Kobe Line. The complicated junction looks impressive, as if it is alive and has its own will. The night view which creates supernatural scenery with cars coming and going and the lights of the town might be a unique scenery of the big city, Osaka.

▼2 Enokojima, Nishi Ward, Osaka City／
8 min walk from Awaza Station on the Osaka Metro Chuo Line and Sennichimae Line



Nishi Ward



28.

Gempachibashi Bridge to See Gimbashi Bridge, Okawa River and Osaka Castle



Osaka City

Gempachibashi Bridge is named after the “Gempachiwatashi” ferry, which used to be the only way of transportation until the bridge was built there. It is also known from the Haiku about crossing the Gempachi to see plum blossoms, written by YOSA Buson. You can enjoy the view of cherry blossoms in full bloom, Gimbashi Bridge, Okawa River, and Osaka Castle from Gempachibashi Bridge in the spring.

▼4 Nakano-cho, Miyakojima Ward, Osaka City /
4 min walk from JR Sakuranomiya Station

Miyakojima Ward



29.

Ochiaikami Ferry to See Kizugawa-Suimon Sluice Gate



The estuary of Ajigawa River, Shirinashigawa River, and Kizugawa River which flow through the west Osaka area has a rare arched sluice gate to protect urban areas from high tides. The arched steel green gate of Kizugawa-Suimon sluice gate is stunning, and you will be shocked at how big it is. However, it is going to be remodeled to endure tsunamis, so you might be able to see the current sluice gate only a few times.

▼1 Chishima, Taisho Ward, Osaka City /

【Chishima side boarding point】 Transfer to the Osaka City Bus from Taisho Station on the JR Osaka Loop Line and Osaka Metro Nagahori Tsurumi-ryokuchi Line, get off at Chishimakoen-mae Stop, then walk 5 min

【Kitatsumori side boarding point】 9 min walk from Tsumori Station on the Nankai Shiomibashi Line

Taisho Ward

30. Chuo-Tottei Diamond Point to See Osaka Bay and Sunset

Diamond Point located in Chuo-Tottei at Osaka Port is famous as the place that has the most beautiful sunset at Osaka Port.

If the timing is good, you can see the sightseeing sailing boat called Santa Maria sailing with the sunset in the background.

Santa Maria is a motif of Columbus's flagship "Santa Maria". You can fully enjoy Osaka Port cruising leisurely while feeling the sea breeze. The world's largest aquarium, Osaka Aquarium KAIYUKAN and Tempozan Marketplace are also located there, so children to adults can enjoy shopping and playing all day long in this area.

▼1 Kaigandori, Minato Ward, Osaka City /
8 min walk from Osakako Station on the Osaka Metro Chuo Line



Minato Ward



31.

Hydrophilic Seawall of Chikko in Minato Ward to See Minato Ohashi Bridge

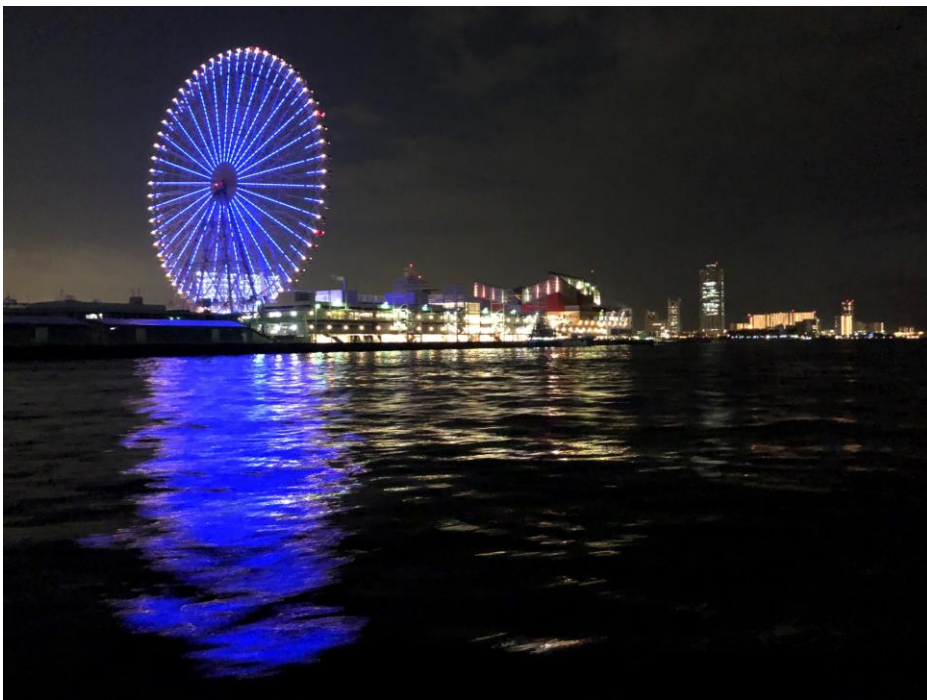


Osaka City

Minato Ohashi Bridge was completed in 1974 and has a total length of 980m. It is Japan's longest truss bridge and is one of the most distinctive landmarks in the Osaka Port area. You can see the full view of Minato Ohashi Bridge from the Hydrophilic seawall. There is a Chikko Akarenga-soko (Red Brick Warehouse) near the Hydrophilic seawall. It has a history of about 100 years, so you can enjoy the atmosphere of the port town.

▼2 Kaigandori, Minato Ward, Osaka City／

7 min walk from Osakako Station on the Osaka Metro Chuo Line



32.

Tempozan Ferry to View Tempozan Giant Ferris Wheel



Tempozan Ferry goes back and forth between Tempozan (Minato Ward) and Sakurajima (Konohana Ward). It is a means of transportation for residents and one of the spots you can feel Osaka, the Aqua Metropolis. You can also see the Tempozan Giant Ferris Wheel up close while changing the angle as the ship sails. The LED illuminations reflect on the water surface during the dusk and colorize Ajigawa River beautifully.

▼3 Chikko, Minato Ward, Osaka City／

【Chikko side boarding point】 10 min walk from Osakako Station on the Osaka Metro Chuo Line

【Sakurajima side boarding point】 10 min walk from Sakurajima Station on the JR Yumesaki Line



33. *Sammon Gate With a View of Shitennoji Temple*



Shitennoji temple is a temple that represents Osaka and was founded in 593 by Prince Shotoku. It has a history of over 1400 years. You can see the unique layout of the temple with the main buildings lined up in a straight line, which is called "Shitennoji Temple style Garan Layout," one of the oldest architectural styles in Japan. It is a valuable view spot that has been opened to the public since ancient times as a place to pray for peace.

▼1-11 Shitennoji, Tennoji Ward, Osaka City /
5 min walk from Shitennojimae-Yuhigaoka Station on the Osaka Metro Tanimachi Line

Tennoji Ward

34.

Tennoji Park (TEN-SHIBA) With a View of Abeno Harukas



Osaka City

“TEN-SHIBA”(Tennoji Park) is located in Tennoji. Many railway companies have lines running to Tennoji station, the gateway to southern Osaka. “TEN-SHIBA” is familiar to citizens as a place that offers a new way to enjoy the park and city at once. The contrast between the horizon of the wide lawn and the skyscraper’s skylines is splendid.

▼5 Chausuyama-cho, Tennoji Ward, Osaka City／

Short walk from JR Tennoji Station or Tennoji Station on the Osaka Metro Midosuji Line and Tanimachi Line



35.

Genshojizaka Hill to View Historical Scenery

Genshojizaka Hill is one of the Tennoji Nanasaka (7 hills in Tennoji), and the name originates from the temple at the foot of the hill, “Genshoji Temple.” There are many temples around this area. When you walk the hill, you can feel the history of the area looking down from the top of the curved stone step slope and plaster wall.

▼1 Shitaderamachi, Tennoji Ward, Osaka City／

7 min walk from Tanimachi 9-chome Station on the Osaka Metro Tanimachi Line and Sennichimae Line



36. Shinsekai With a View of Tsutenkaku Tower

Shinsekai has a classic atmosphere that feels like the Showa era. There are many Kushikatsu restaurants and flour-based foods, so you can enjoy famous Osaka foods. There are also shops where you can play games such as shogi (chess) and shateki (shooting game). The nearby Nanyodori shopping street is called Janjan-Yokocho. It is said that the shopping street came to be called Janjan-Yokocho before the war because the sound of the shamisen used to attract people to the shops made the sound, "Jan-Jan."

Naniwa Ward

▼3 Ebisuhashi, Naniwa Ward, Osaka City／

3 min walk from Ebisucho Station on the Osaka Metro Sakaisuji Line

6 min walk from JR Shinimamiya Station on the Osaka Loop Line and Dobutuen-mae Station on the Osaka Metro Midosuji Line and Sakaisuji Line

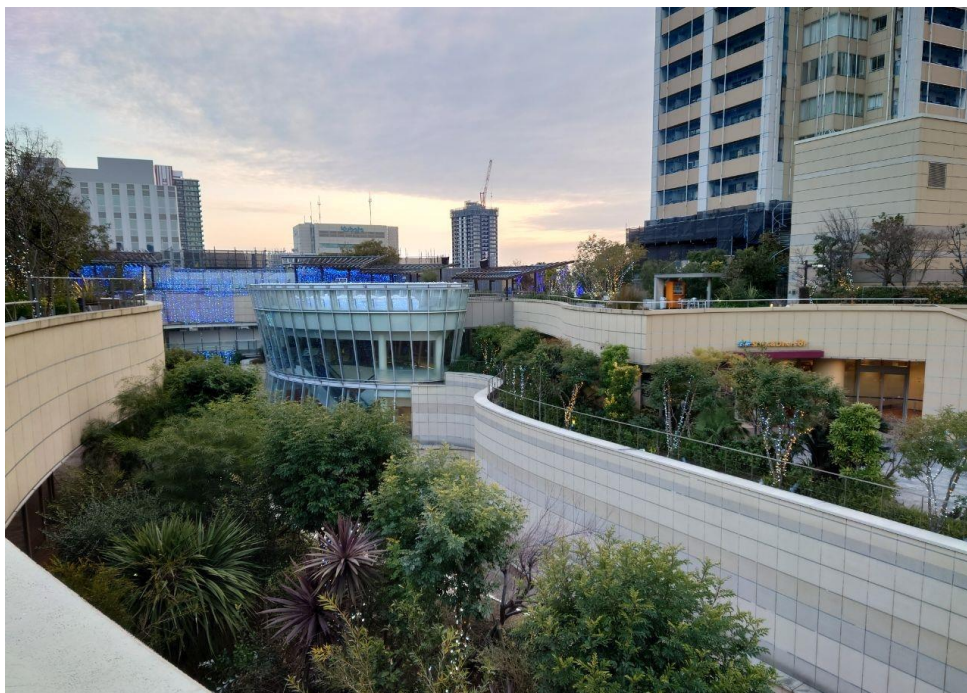
37. *Minatomachi River Place, Dotonbori River* *View From Fukaribashi Bridge on the Osaka Namboku City Road*

The Minatomachi Dock of the Dotonbori River is the western endpoint for the sightseeing boats on the river. Unlike the lively Ebisubashi Bridge area, it is a comforting townscape. The combination of the blue sky after the sun sets and the townscape will make you emotional. The surrounding “Horie area” lined with stylish shops is also very popular.

▼1 Minatomachi, Naniwa Ward, Osaka City /
 3 min walk from Osaka Metro Namba Station



38. *Parks Garden Overlooking the Oasis in Downtown*



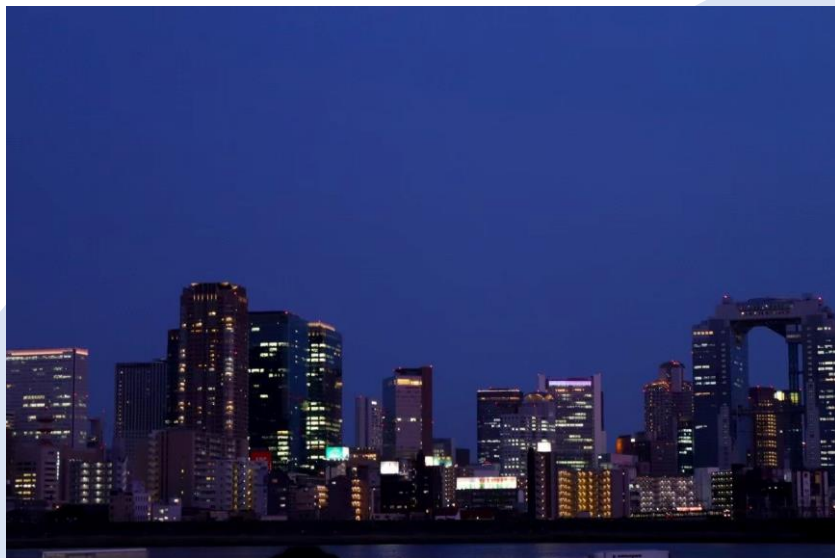
This is a space that is filled with flowers and trees allowing you to feel the four seasons. Although it is in the downtown, you can feel the breath of living things. It is familiar to people as “Forests close to you without going very far.” It is a great place to spend a relaxing time away from the hustle and bustle of the city.

▼2 Nambanaka, Naniwa Ward, Osaka City /
 Directly connected to the central and south exits of Nankai Namba Station

39. Yodogawa River Riverbed to View the Nightscape of Umeda

This is a night view of the business district in Umeda from Yodogawa River riverbed. You can enjoy the illumination of the skyscrapers along with the gentle flow of the river a little away from the bustling urban area. The building lights reflected on the water surface creates a very beautiful scenery.

▼Tsukamoto, Yodogawa Ward, Osaka City／
8 min walk from Tsukamoto Station on the JR Kobe Line



Yodogawa Ward



40. Abeno Harukas Observatory "Harukas 300"

Overlooking Osaka Plain



Abeno Ward

The view of the urban area from the skyscraper observatory 300m above ground looks like an elaborate diorama. If the weather is good, you can see beautiful sceneries such as the area from Kyoto to Mt. Rokko, from Akashi-Kaikyo Bridge to Awaji Island, Mt. Ikoma, and Kansai International Airport. There is a department store, offices, hotels, and an art museum inside Abeno Harukas. The building is very popular with tourists because of the easy access from the station.

▼1 Abenosuji, Abeno Ward, Osaka City／

Directly connected to Kintetsu Osaka-Abenobashi Station

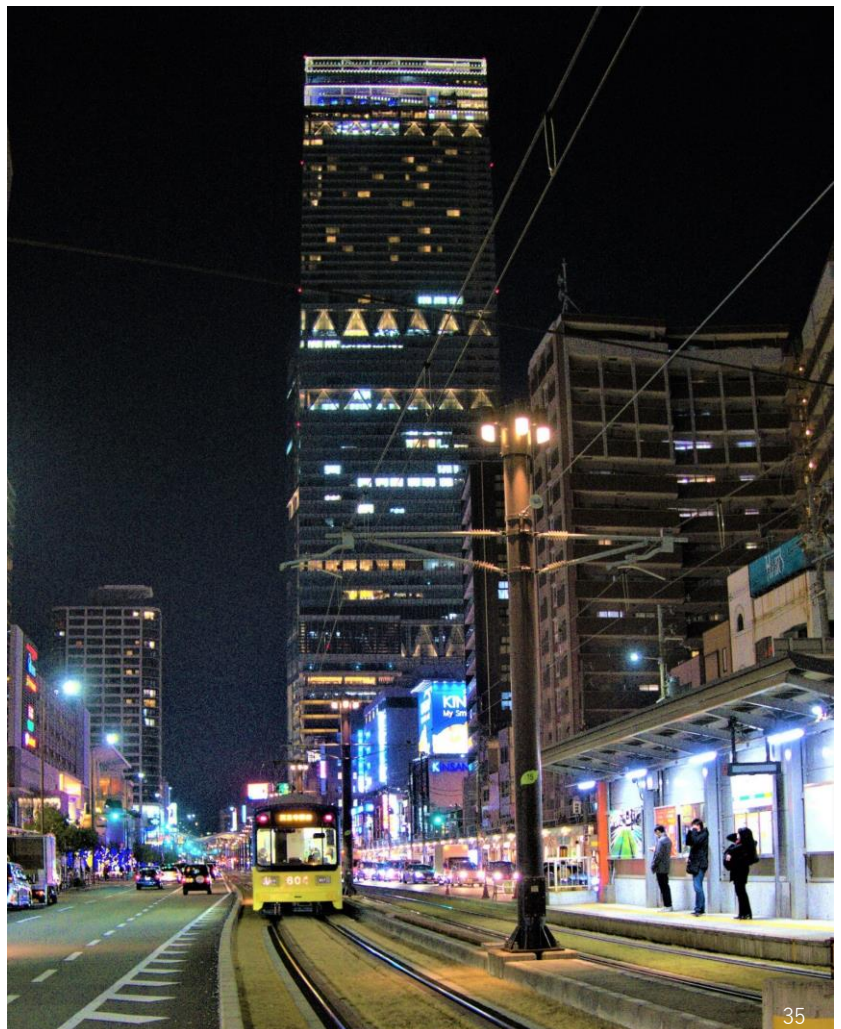
41.

Hankai Railway "Abeno Stop"
With a View of Abeno Harukas

With Abeno Harukas in the background, the retro Hankai Railway called "Chinden" runs slowly on the grass lined tracks. It connects southern Osaka City and Sakai City. "Chinden" is familiar with tourists and citizens as the only remaining tram in Osaka. You can see the combination of the historical train and current townscape regardless of time of day.

▼3 Abenosuji, Abeno Ward, Osaka City／

3 min walk from JR Tennoji Station





42. Sakishima Cosmo Tower Observatory Overlooking Osaka Bay



From Sakishima Cosmo Observatory, a landmark of the Osaka Bay area, you can view the sunset over Osaka Bay, Awaji Island, and Akashi-Kaikyo Bridge. It is also very popular as a night view spot overlooking Osaka Plain from the seaside. You can see the panoramic view of Yumeshima, the venue for Expo 2025 Osaka, Kansai, Japan.

▼1 Nankokita, Suminoe Ward, Osaka City/
7 min walk from Trade Center-mae Station on the Osaka Metro Nanko Port Town Line

Suminoe Ward



43. *Universal Studios Japan With a View of the Townscape Inside the Park*

Universal Studios Japan is a theme park based on movies. You can feel as if you have become one of the characters in the movies. The Jurassic Park area recreates the cityscape of New York, so you can enjoy the feeling of traveling abroad while staying in Japan. It is a popular spot for tourists because new areas and attractions have been introduced one after another.

▼2-1-33 Sakurajima, Konohana Ward, Osaka City／
5 min walk from Universal City Station on the JR Yumesaki Line

Konohana Ward

