

VIEW SPOT OSAKA

Encountering Beautiful
Landscapes in Osaka

OFFICIAL GUIDEBOOK

OSAKA

VIEW SPOT OSAKA



Nominations for beautiful views of Osaka's world-class attractive, unique and colorful landscapes will be accepted from the public and chosen as "View Spot Osaka" locations. By sharing this information, we hope that the project will encourage both residents, entrepreneurs and visitors to become interested in the landscape, and help promote the beautification of Osaka's landscape.

For this issue, we selected 100 View Spot Osaka locations collected through four selections. All locations have unique features in history, nature, infrastructure, etc. We hope that you will take some time to enjoy visiting them!

Contents

North Osaka Area 04

Osaka City Area 18

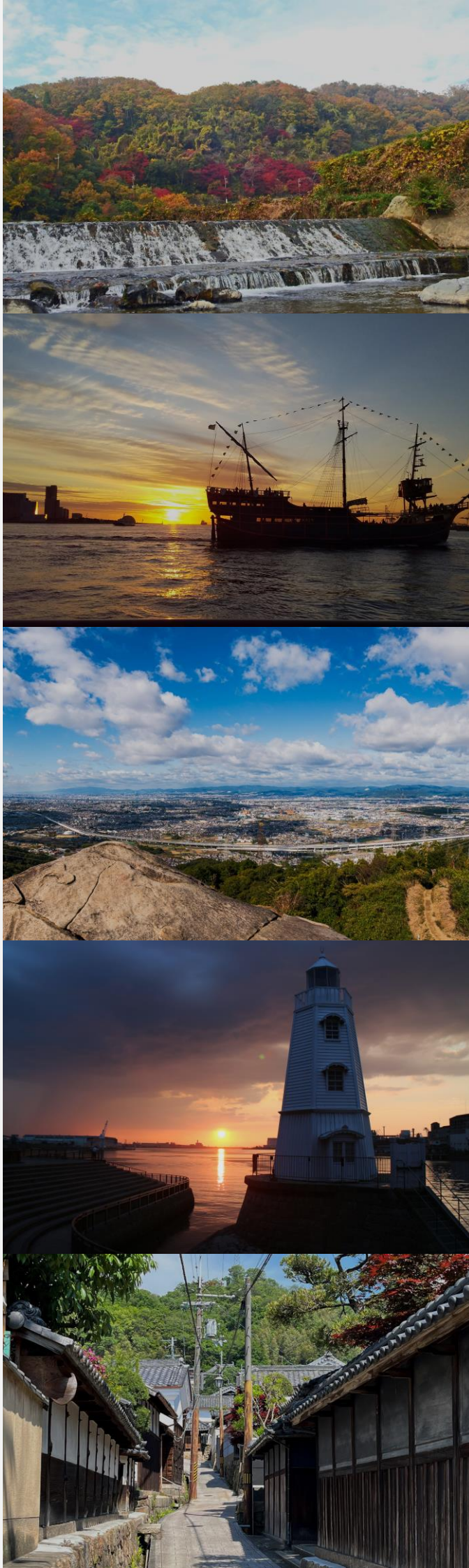
East Osaka Area 38

Senshu Area 54

Minami Kawachi Area 72

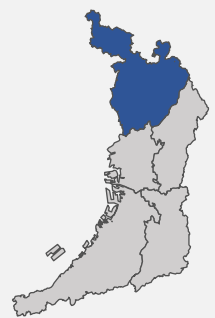
MAPS 84

Information 98





North Osaka Area



Nose Town

01. Mt. Myokenzan Seirei Terrace Overlooking Osaka Bay
02. Entrance of the Togo Bypass, Seifuji Temple With a View of Jiojo-Castle, Castle Town's Stone Wall

Toyono Town

03. Slope Overlooking the Takayama Terraced Rice Fields

Ikeda City

04. Ikeda City Satsukiyama-ryokuchi Green Space Overlooking Northern Osaka and Osaka City Area

Minoh City

05. Takimae Rest Area With a View of Minoh Falls
06. Katsuo-ji Temple Overlooking the Kachi-Daruma With Massive Nature

Toyonaka City

07. Senrigawa River Bank With a View of Osaka International Airport and Planes

Suita City

08. Sanshikisaido Road to See the Fall Foliage
09. Expo'70 Commemorative Park Grand Staircase Overlooking the Tower of the Sun and Hokusetsu Mountain Range

Settsu City

10. Taishogawa River Riverbed to See Taishogawa River
11. Monorail Window Spot Overlooking Bullet Trains

Takatsuki City

12. Settsukyo Park With a View of Akutagawa River With Fall Foliage of Mt. Miyoshi in the Background
13. Shinkawa River Bank, Flows in Parallel Along the Akutagawa River With a View of Cherry Blossom Trees and Spring Flowers

Shimamoto Town

14. Choshibashi Bridge to See Minasegawa River and Hokusetsu Mountain Range

Ibaraki City

15. Aigawa River Dam Observation Spot to View the Dam
16. Hankyu Bus Kurumagawasho Stop to View Zenihara Terraced Rice Fields and Satoyama Landscape
17. Former Ibarakigawa-ryokuchi Green Space to See the Greenway



01. Mt. Myokenzan Seirei Terrace Overlooking Osaka Bay

Mt. Myokenzan is known as a world-famous sacred place for worshipping the North Star and is a popular hiking spot where you can enjoy the beautiful scenery of each season. The view from the Seirei Terrace at the summit of the Mt. Nose Myokenzan is great and Osaka Plain spreads out below. You can also see the magnificent scenery of Osaka Bay and Awaji Island from there. It is the best place to enjoy the beauty of nature and stillness.

▼661 Nomanaka, Nose-cho／

Hike about 5 hours from Myokenguchi Station on the Nose Electric Railway Myoken Line

※You can use a shuttle bus (need pre-booking) from Myokenguchi Station

Nose Town

02.

*Entrance of the Togo Bypass,
Seifuji Temple With a View of Jiojo-Castle,
Castle Town's Stone Wall*





Toyono Town

03. Slope Overlooking the Takayama Terraced Rice Fields

Toyono Town, Takayama district is TAKAYAMA Ukon's birthplace. He is the warlord who fought under ODA Nobunaga and TOYOTOMI Hideyoshi in the Sengoku Period and is well-known as a Christian Daimyo. The scenery of spreading terraced rice fields that is surrounded by the mountain range is beautiful. You can see the beautiful scenery of it especially from rice planting in May to harvesting in September.

▼Takayama, Toyono-cho／

Transfer to the Hankyu Bus from Senri-Chuo Station on the Kita-Osaka Kyuko Railway Namboku Line and Osaka Monorail Line.
Get off at Takayama Stop and walk 6 min



Seifuji Temple is located along the National Route 477 (Togo Bypass) that goes through the eastern part of Nose Town. You can see the view of the castle town where the historical look remains. The stone wall stretches about 1 km and retains the old atmosphere. In addition, the way of piling up the stones and types of stones are different, so the changing of scenery while moving along the national highway is also fascinating.

▼Jio, Nose-cho／

Transfer to the Myokenguchi-Nose-go (Bus) from Myokenguchi Station on the Nose Electric Railway Myoken Line.
Get off at Okunoin Stop and walk 5 min.

*Nose-cho residents and commuters can use the above bus.
Others should use a taxi, etc.



04. Ikeda City Satsukiyama-ryokuchi Green Space Overlooking Northern Osaka and Osaka City Area

Ikeda City



From Satsukidaira Observatory halfway up Mt. Satsukiyama in Ikeda City, you can see the skyscrapers of Osaka City and mountains such as Mt. Ikoma in the distance. The night view and the sunrise overlooking the Osaka Plain are also famous. Satsukiyama-ryokuchi Green Space has a family-friendly hiking course, so you can enjoy hiking easily in the various seasons such as cherry blossom, azalea and fall foliage seasons.

▼5 Satsukigaoka, Ikeda City／
60 min walk from Ikeda Station on the Hankyu Takarazuka Line

05.

Takimae Rest Area With a View of Minoh Falls



Minoh Falls is well-known as a “world famous waterfall” and the only waterfall in Osaka selected as one of the “Top 100 Waterfalls in Japan.” During the fall, the powerful flow of the falls and the vivid fall foliage create a wonderful landscape. Beautiful nature surrounds the falls, so you can enjoy each season such as the fresh green Japanese maples in the spring, as a cool down spot in the summer, and the snow-covered scenery in the winter.

▼2 Minohkoen, Minoh City／

50 min walk from Minoh Station on the Hankyu Minoh Line



06.

Katsuo-ji Temple Overlooking the Kachi-Daruma With Massive Nature

Katsuo-ji Temple is well-known as a “temple of winning luck” and “temple of Kachi-Daruma (Winning Daruma),” so people believe it as a “temple of winning in every aspect of life,” such as examinations, warding off evil, illness, and sports. You can enjoy the Daruma offerings, which are displayed on the roof to reach good luck to the heavens, and the contrast of greenery of the Minoh Quasi-National Park after drawing a “64 Oracle Daruma Mikuji (Sixty-four Trigrams Daruma Fortune Slip)” at the temple.

▼2914-1 Aomadani, Minoh City／

- Transfer to the Hankyu Bus from Senri-Chuo Station on the Kita-Osaka Kyuko Railway, get off at Katsuo-ji Stop and short walk
- Walk about 100 min from Minoh Station on the Hankyu Minoh Line

07.

*Senrigawa River Bank
With a View of Osaka
International Airport and Planes*



Toyonaka City

You can see the large aircrafts approaching the runway overhead and planes taking off into the air on the Senrigawa River Bank, which borders the southern end of Osaka International Airport. You can also enjoy the natural beauty of the area throughout the day, such as the wide blue sky, the setting sun and the illumination of the runway guide lights.

▼2 Haradanaka, Toyonaka City／

19 min walk from Sone Station on the Hankyu Takarazuka Line

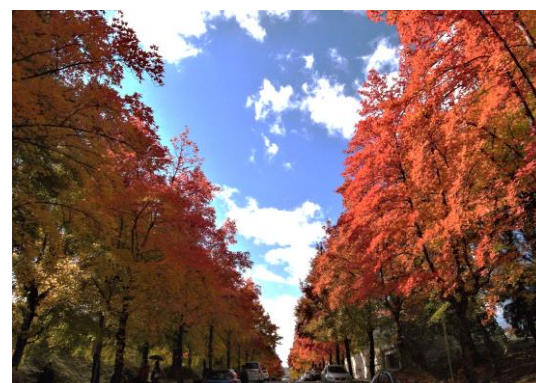




08. Sanshikisaido Road to See the Fall Foliage

Suita City

The road that runs north-northeast from the northern end of Hankyu Railway's Kita-senri station is called Sanshikisaido Road. A walk along the road allows visitors to enjoy the seasons. The fresh greenery of spring is beautiful, but the fall scenery colored light red, pale yellow, and pale green is breathtaking, and the fall foliage tunnel is a pleasure to your eyes.



▼4 Fujishirodai, Suita City／

9 min walk from Kita-senri Station on the Hankyu Senri Line

09. Expo'70 Commemorative Park Grand Staircase

Overlooking the Tower of the Sun and Hokusetsu Mountain Range

You can see the Tower of the Sun from the south with the Hokusetsu mountain range in the background. From the grand staircase next to the Expo City, you can enjoy the panorama that changes depending on the season and time from various heights. The grand staircase helps strengthen your legs and lower back.

▼Senri Bampaku Koen, Suita City／
5 min walk from Bampaku-kinen-koen Station
on the Osaka Monorail



Suita City

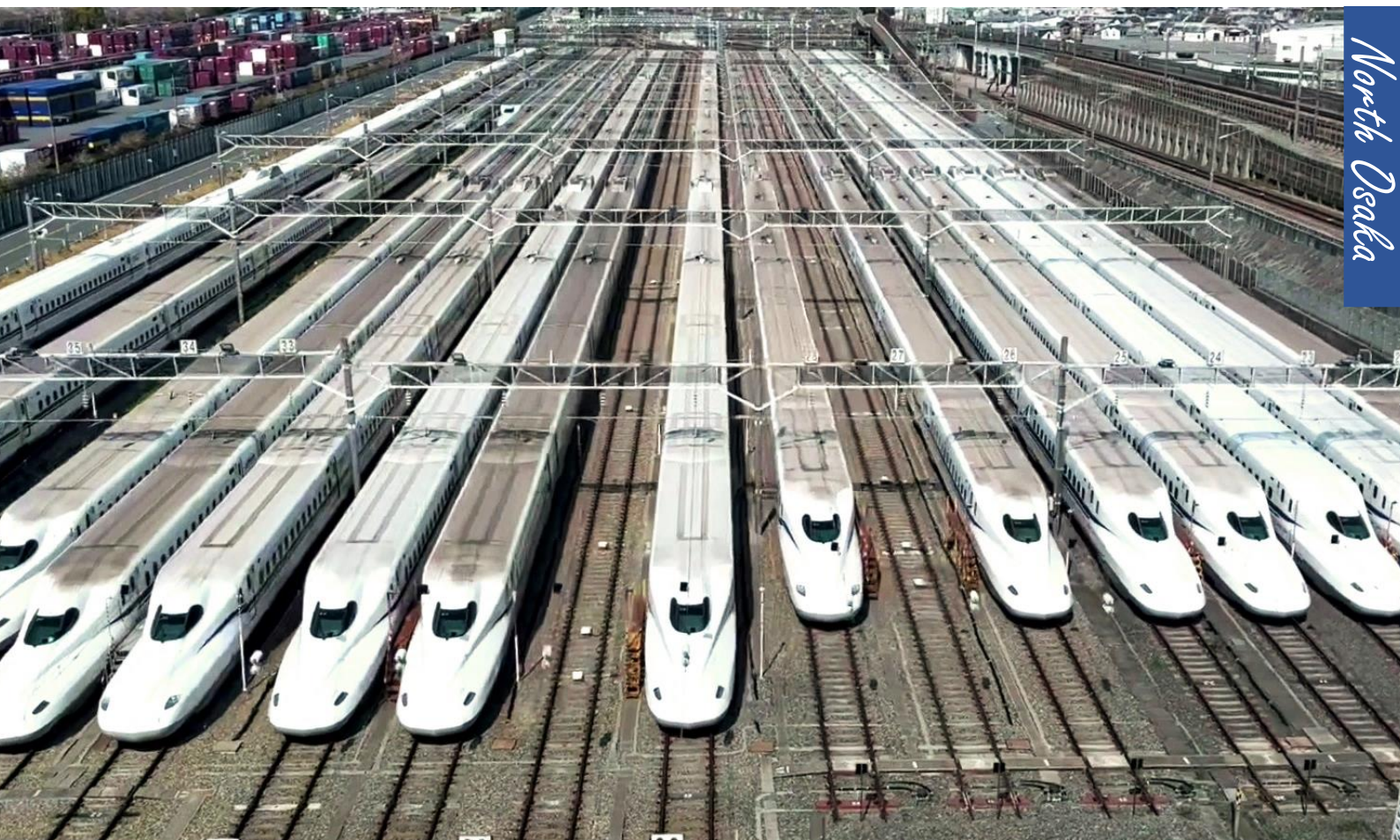
10. Taishogawa River Riverbed to See Taishogawa River



At the riverbed of the Taishogawa River that flows through Ibaraki City and Settsu City, there are some events using the large grounds throughout the year. During the most popular event held on “Children's Day,” you can see a magnificent sight of over 1,000 carp streamers swimming above the river.

▼34 Koroen, Settsu City／
11 min walk from Settsu Station on the
Osaka Monorail

Settsu City



11. Monorail Window Spot Overlooking Bullet Trains

You can see the bullet train depot from the window of the Osaka Monorail between Settsu Station and Minami-settsu Station. There are very few places where you can see so many bullet trains at once. Not only children, but adults will surely be excited by this view. Also, the Osaka Monorail temporarily runs a decorated train called “EXPO TRAIN 2025 Osaka Monorail.” It publicizes the theme of Expo 2025 Osaka, Kansai, Japan, which is “Designing Future Society for Our Lives.”

▼ Aigawaminamimachi, Settsu City /
Between Settsu Station and Minami-settsu Station
on the Osaka Monorail





12. *Settsukyo Park With a View of Akutagawa River With Fall Foliage of Mt. Miyoshi in the Background*

Settsukyo Gorge is a valley that spreads upstream of the Akutagawa River that flows to Takatsuki City, and a picturesque scenery you can feel abundant in nature of the valley. You can enjoy cherry blossoms in spring, fireflies in summer, and foliage in fall. The combination of different colors of Mt. Miyoshi's fall foliage and the clear stream of Akutagawa River is exquisite.

▼5-3 Tsukawaki, Takatsuki City／

Transfer to the City Bus at Takatsuki Station on the JR Kyoto Line, get off at Shimonokuchi Stop, then walk 5 min

Takatsuki City

13. *Shinkawa River Bank, Flows in Parallel Along the Akutagawa River With a View of Cherry Blossom Trees and Spring Flowers*





14. Choshibashi Bridge to See Minasegawa River and Hokusetsu Mountain Range

Choshibashi Bridge is a small bridge located in the southeastern part of Shimamoto Town. It is a valuable spot where you can see both Minasegawa River and Hokusetsu Mountain Range at once, which are scenic resources. At Todaiji Park spread out along the riverbed, you can enjoy cherry blossoms in the spring and bright foliage in the fall.

▼2-1 Todaiji, Shimamoto-cho／

15 min walk from Shimamoto Station on the JR Kyoto Line

Shimamoto Town



There are about 900m of cherry blossom trees on the promenade along the Shinkawa River that flows beside the bank of Akutagawa River. The scenery of flowers such as moss phlox and Thunberg spirea which are tended by members of the local residents' association are beautiful. You can see the spring flowers along the river and pass through the cherry blossom tunnel to enjoy spring.

▼24 Minamishodokoro-cho, Takatsuki City／

Transfer to the City Bus from Takatsuki Station on the JR Kyoto Line, get off at Hatachi Stop, then walk 2 min

15.

*Aigawa River Dam
Observation Spot
to View the Dam*



Aigawa River flows in a north-south direction through Ibaraki City, and Aigawa River Dam was constructed between the mountains. It is a precious beautiful urban dam in Japan, which uses an uncommon masonry technique. Construction started in July 1967 in response to heavy rain disasters in the Hokusetsu area. The project spanned over 50 years and was finally completed in March 2024. A lake has formed thanks to the dam and this spot has become abundant in greenery and water.

▼Daimonji, Ibaraki City／

Transfer to the Hankyu Bus from Ibarakishi Station on the Hankyu Kyoto Line, get off at Daimonkita Stop, then walk 10 min

Ibaraki City



16. Hankyu Bus Kurumagawasho Stop to View Zenihara Terraced Rice Fields and Satoyama Landscape



There is a beautiful scenery of terraced rice fields in the Zenihara district located in north of Ibaraki City. You can see the scenic view of each season such as dandelions in spring, green rice plants in summer, golden heads of rice and bright red spider lilies in fall, and snow-covered landscape in winter.

▼Zenihara, Ibaraki City／

Transfer to the Hankyu Bus from Ibaraki Station on the JR Kyoto Line, get off at Kurumagawasho Stop, then walk 7 min

17. Former Ibarakigawa-ryokuchi Green Space to See the Greenway

The former Ibarakigawa-ryokuchi Green Space was maintained as a greenbelt of the former Ibarakigawa River, which has a total length of 5km and became an abandoned river in 1949. You can enjoy the landscape that changes throughout the seasons. This spot is also selected as one of the "Top 100 Greenery Places in Osaka," and it is famous for cherry blossoms. Although it is in an urban area, the road is surrounded by greenery and provides a comfortable space.

▼7 Katagiri-cho, Ibaraki City/

12 min walk from Ibarakishi Station on the Hankyu Kyoto Line

