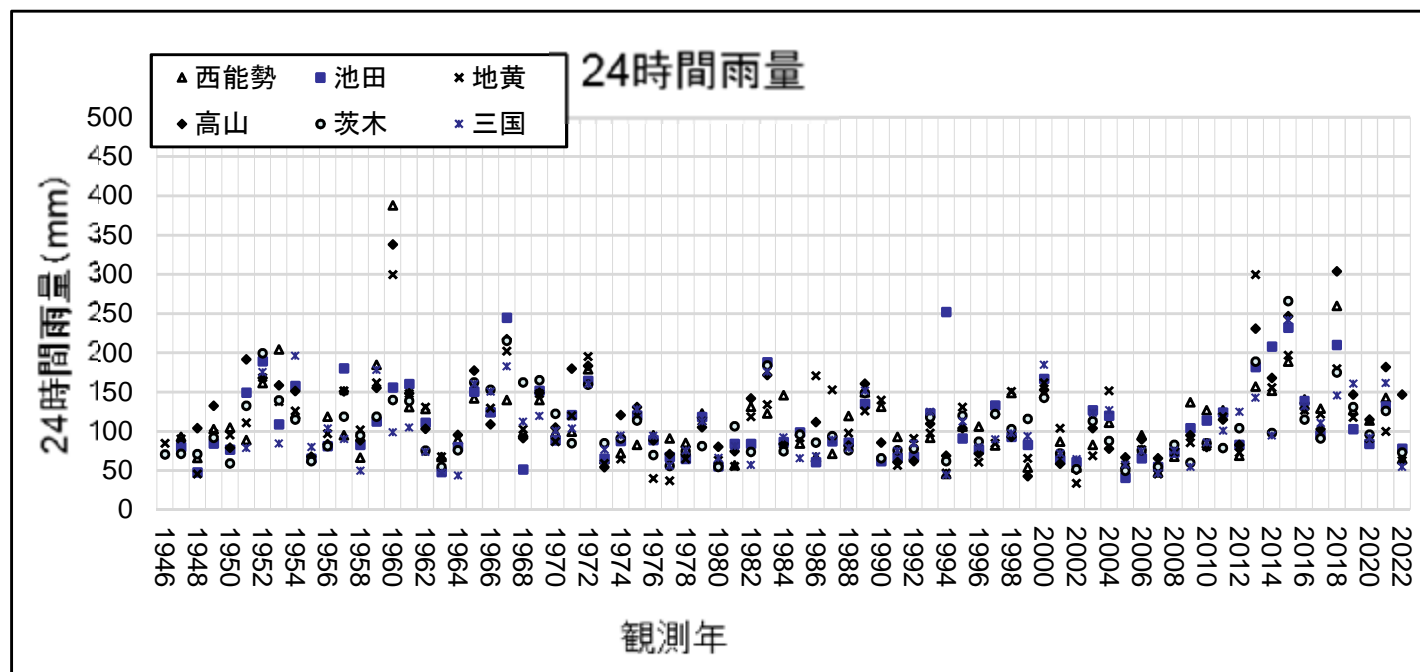
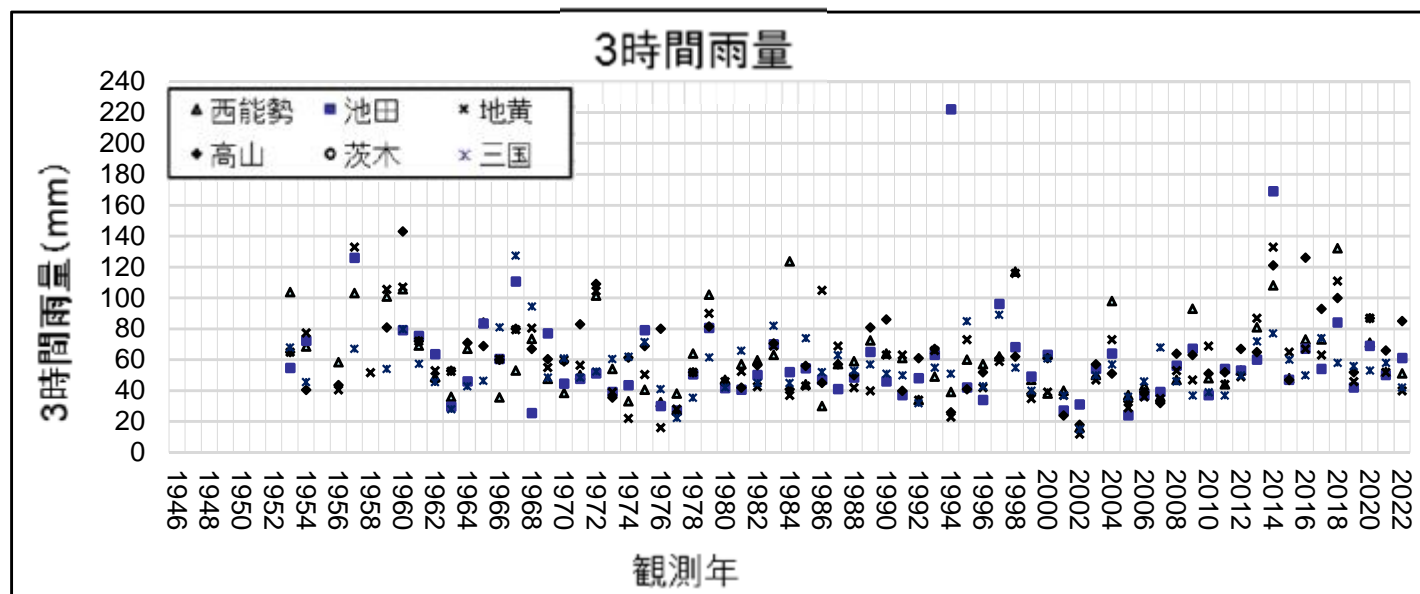
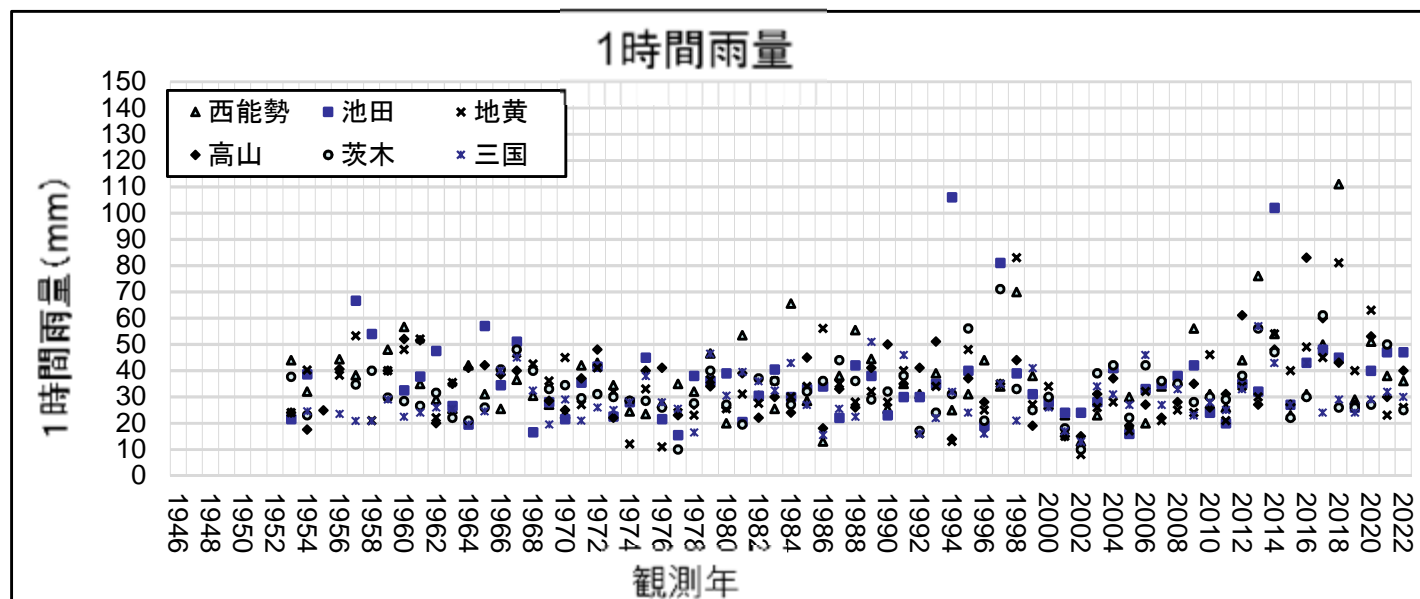

実績降雨の分析データ等

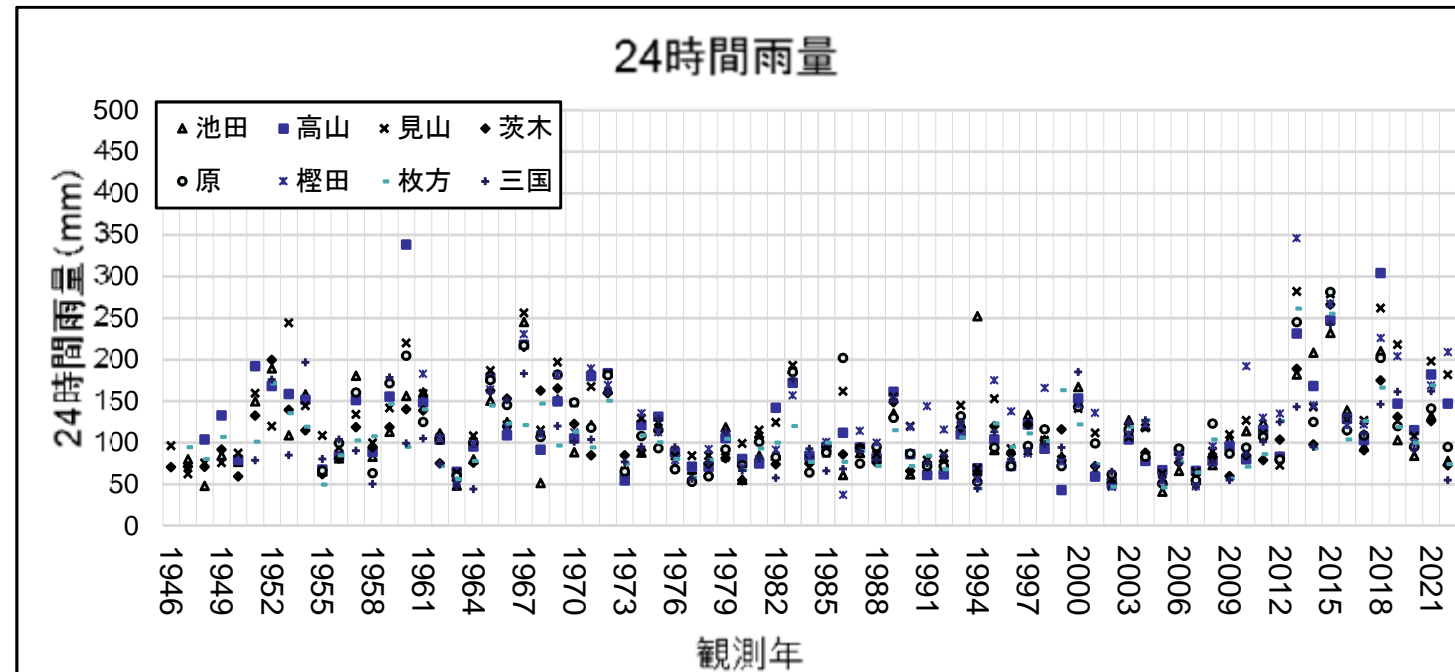
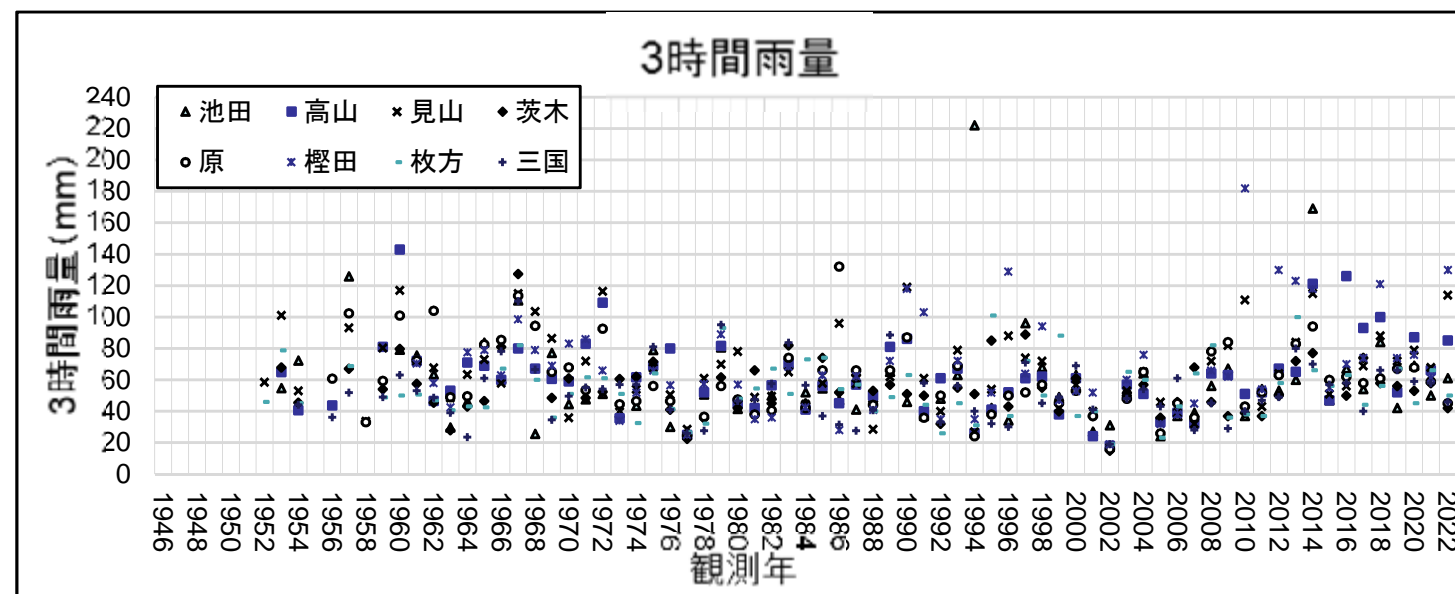
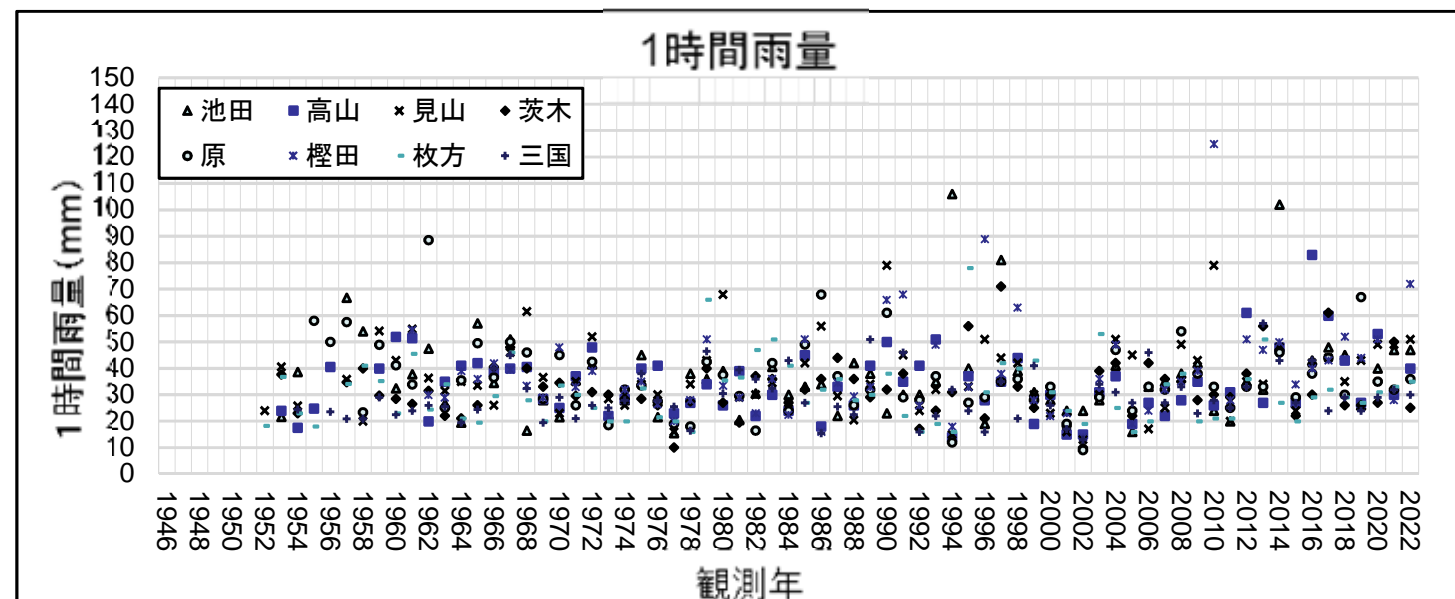
1. 雨量資料収集期間一覧表P 1
2. 地区別・各観測所の年最大雨量グラフP 2
3. 各観測所の年最大降雨量グラフP 5
4. 各観測所の確率雨量表P11

2. 地区別・各観測所の年最大雨量グラフ

【豊能地区】

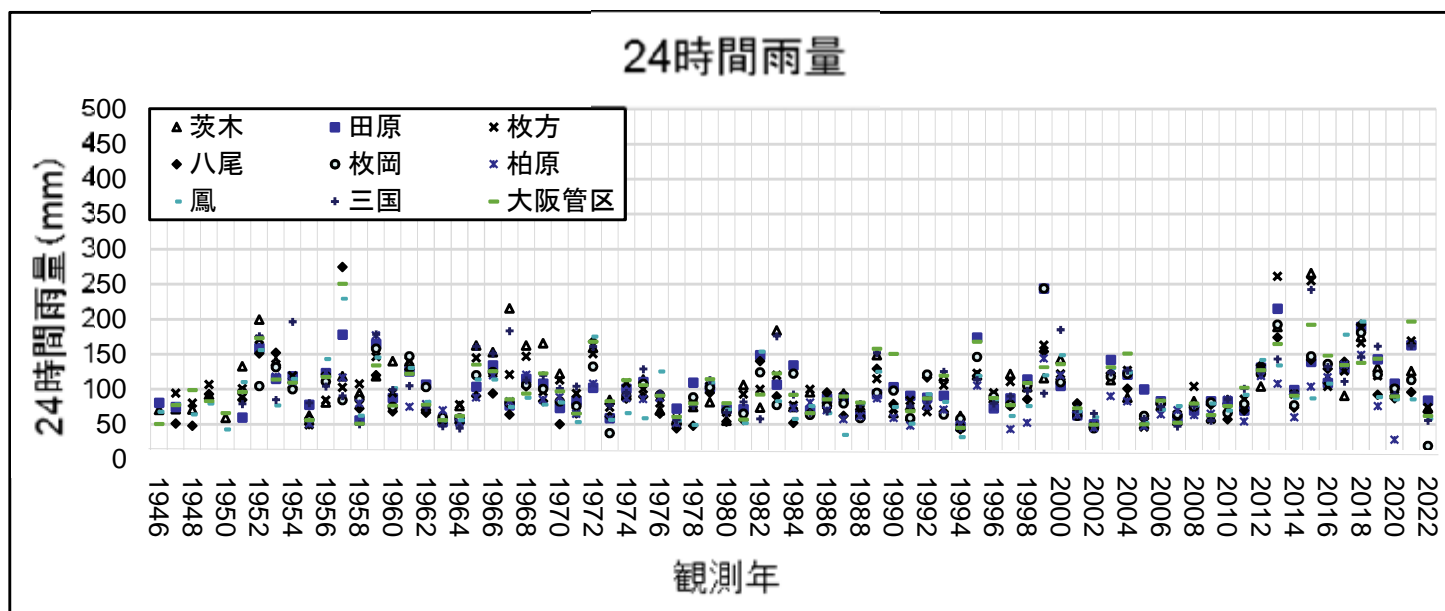
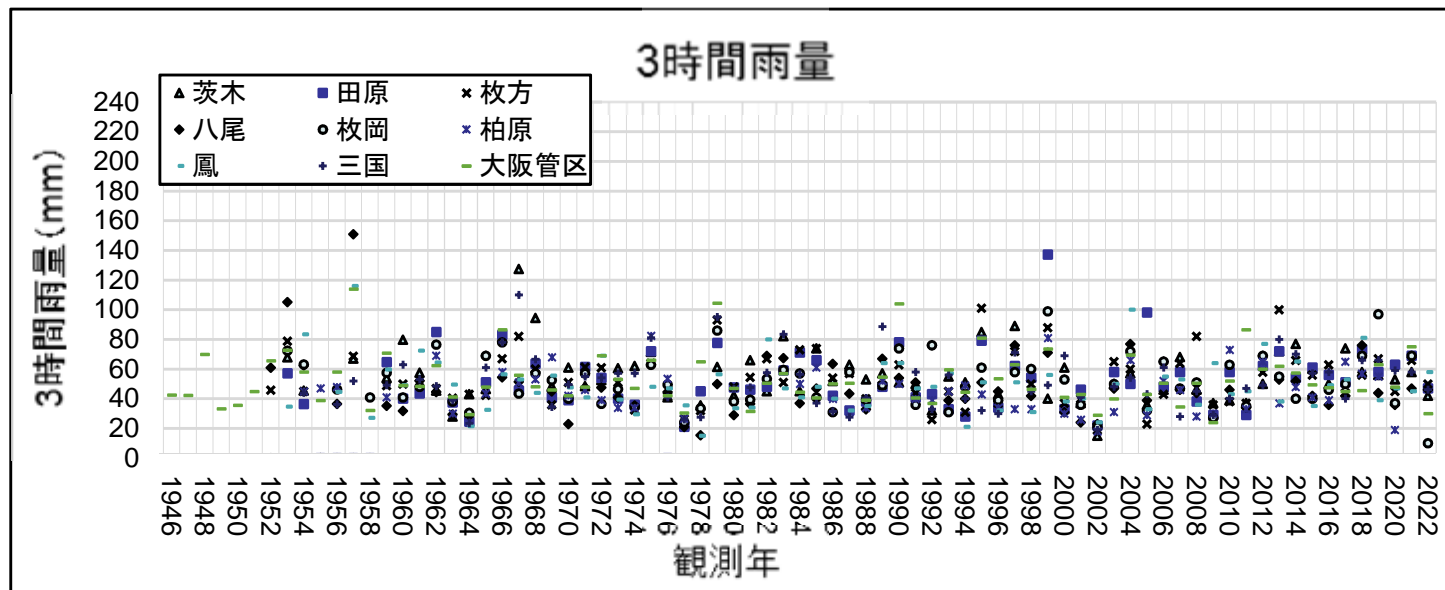
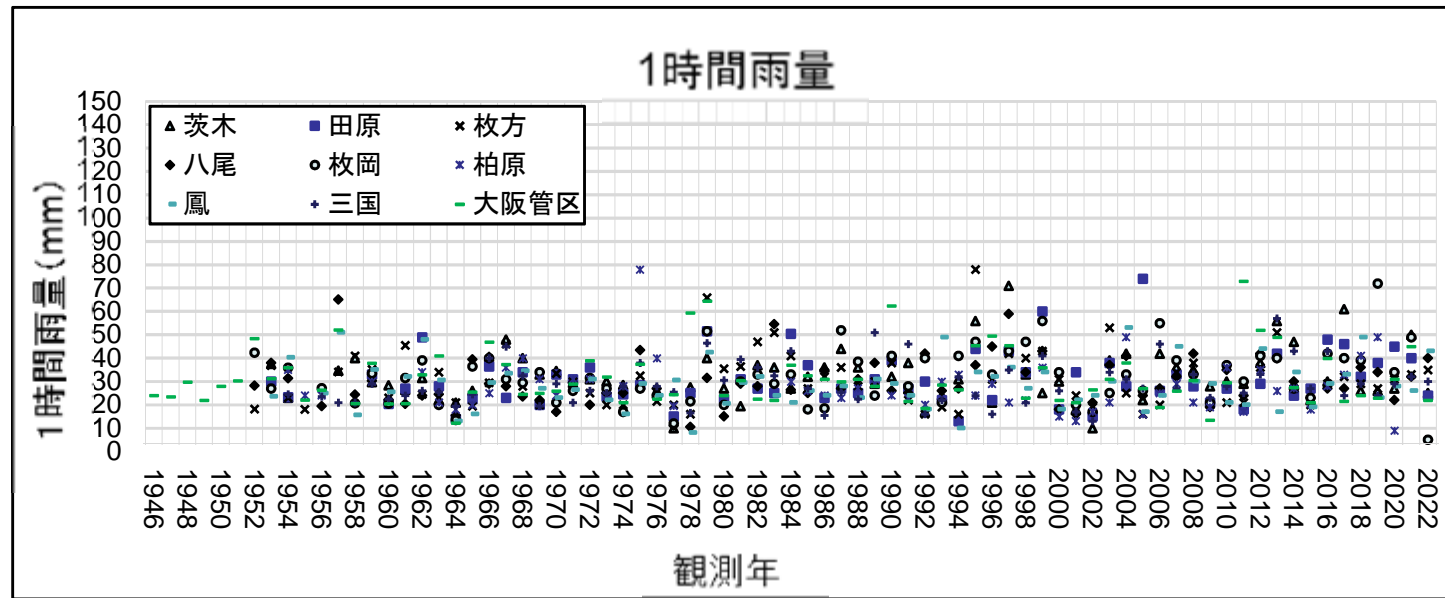


【三島地区】

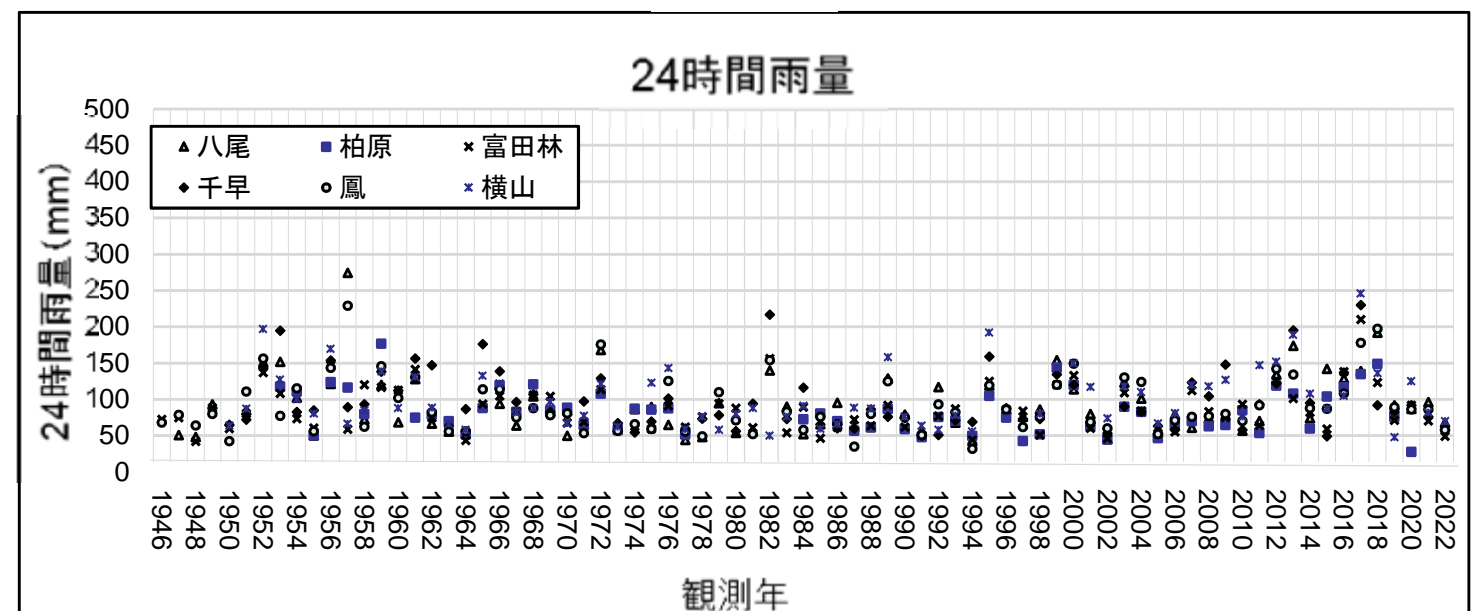
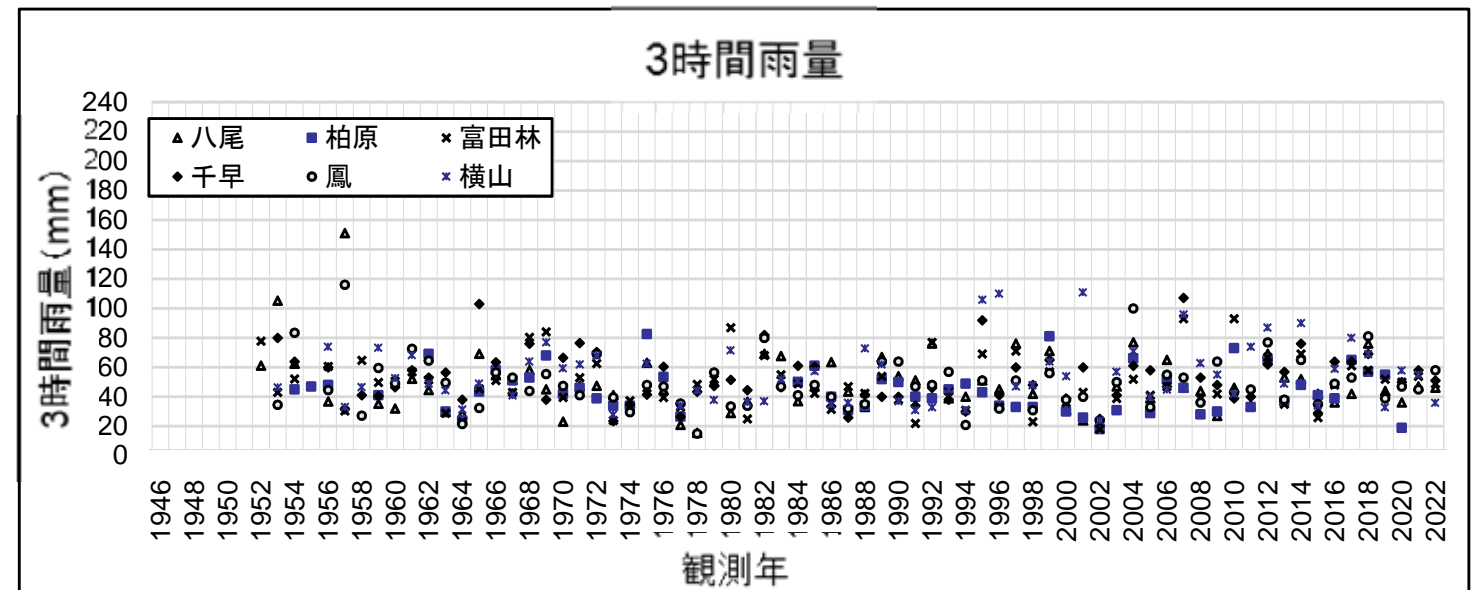
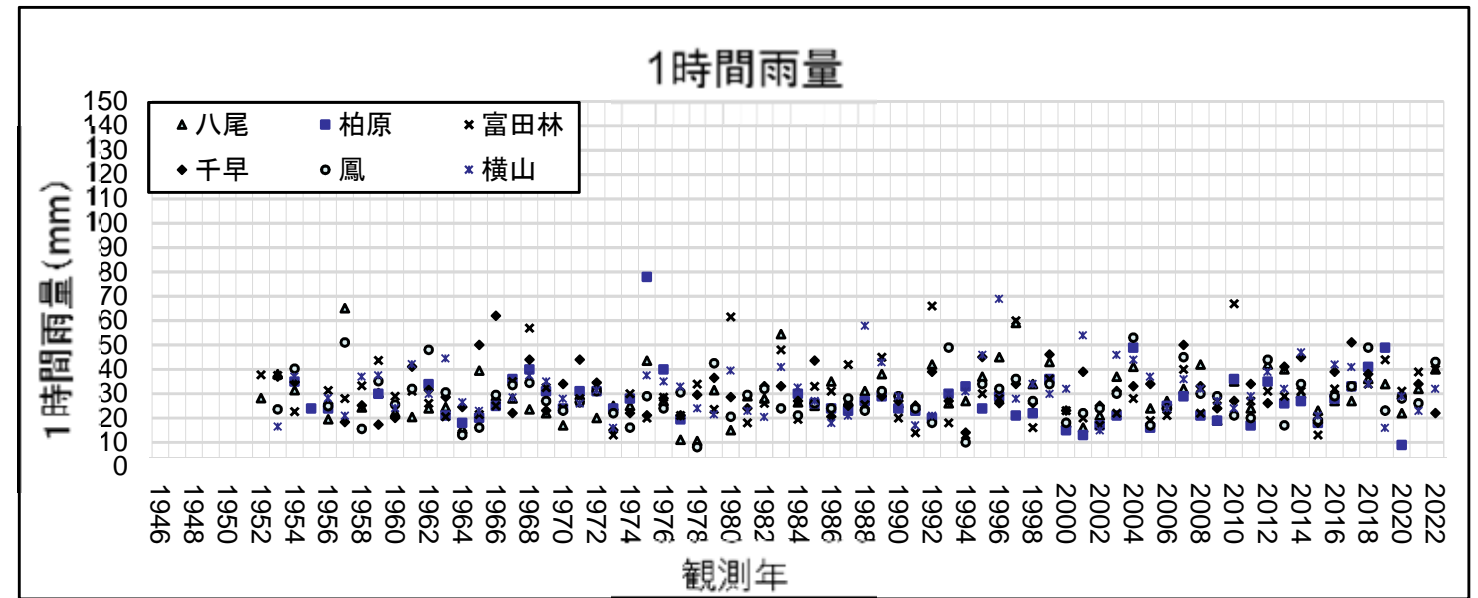


2. 地区別・各観測所の年最大雨量グラフ

【河内地区】

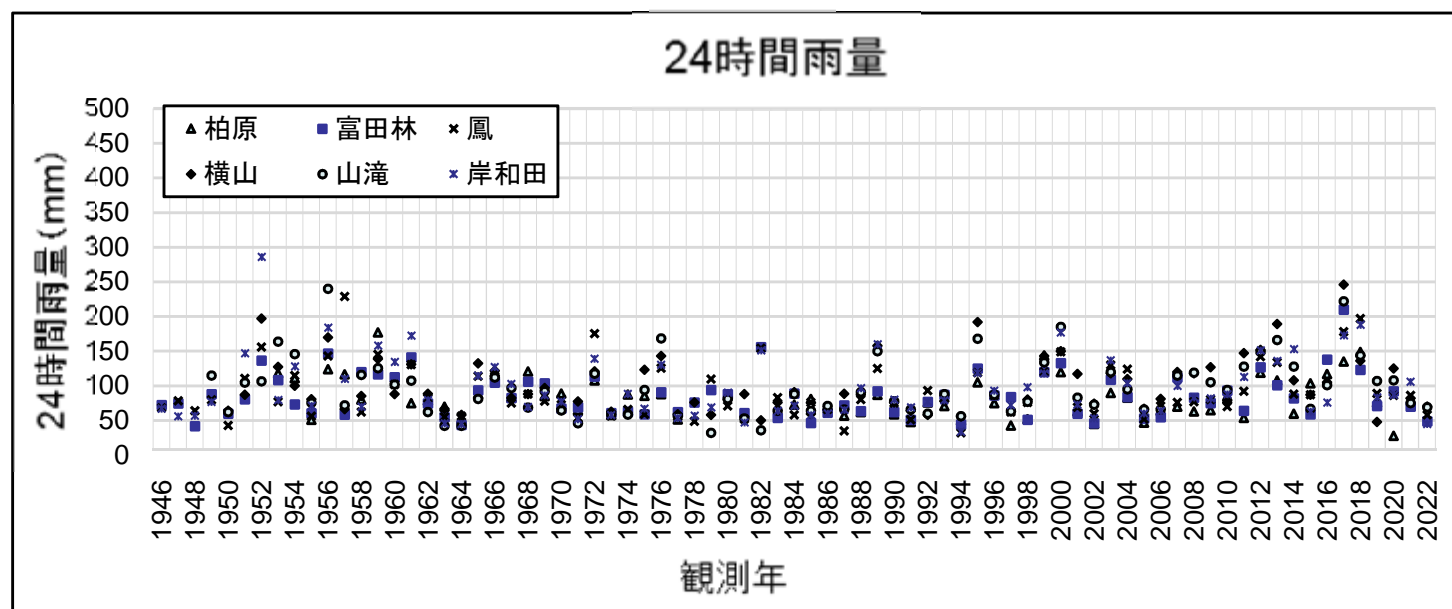
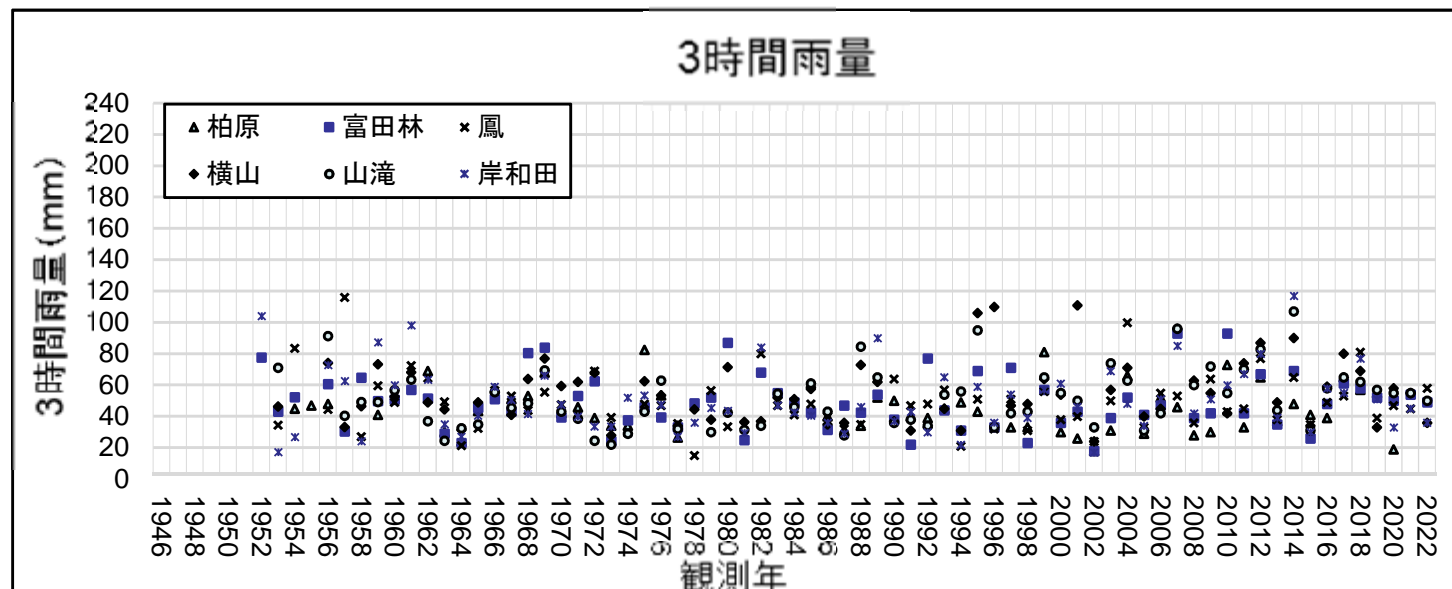
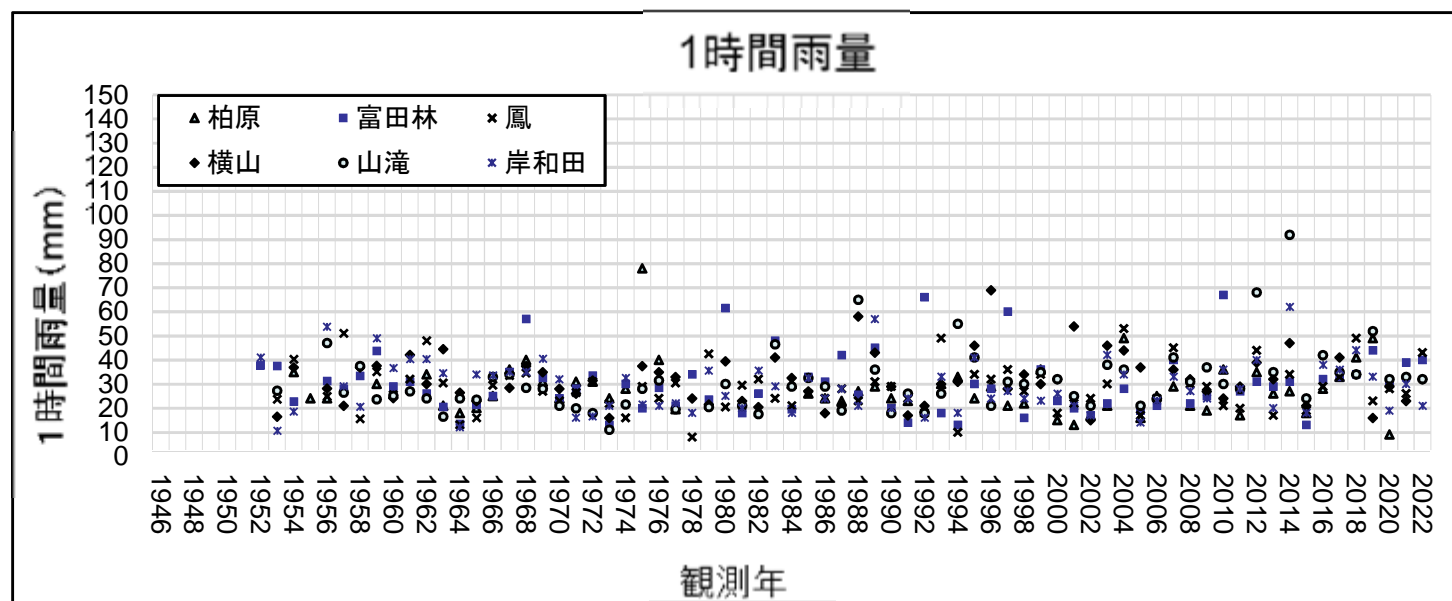


【南河内地区】

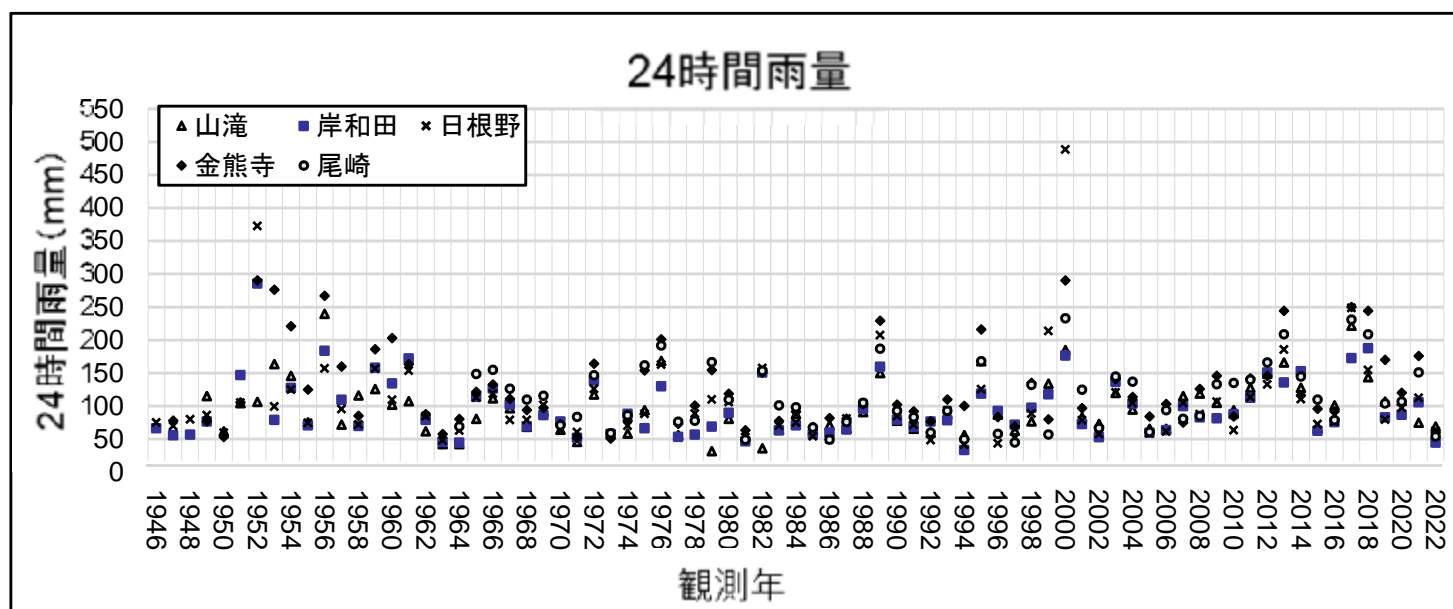
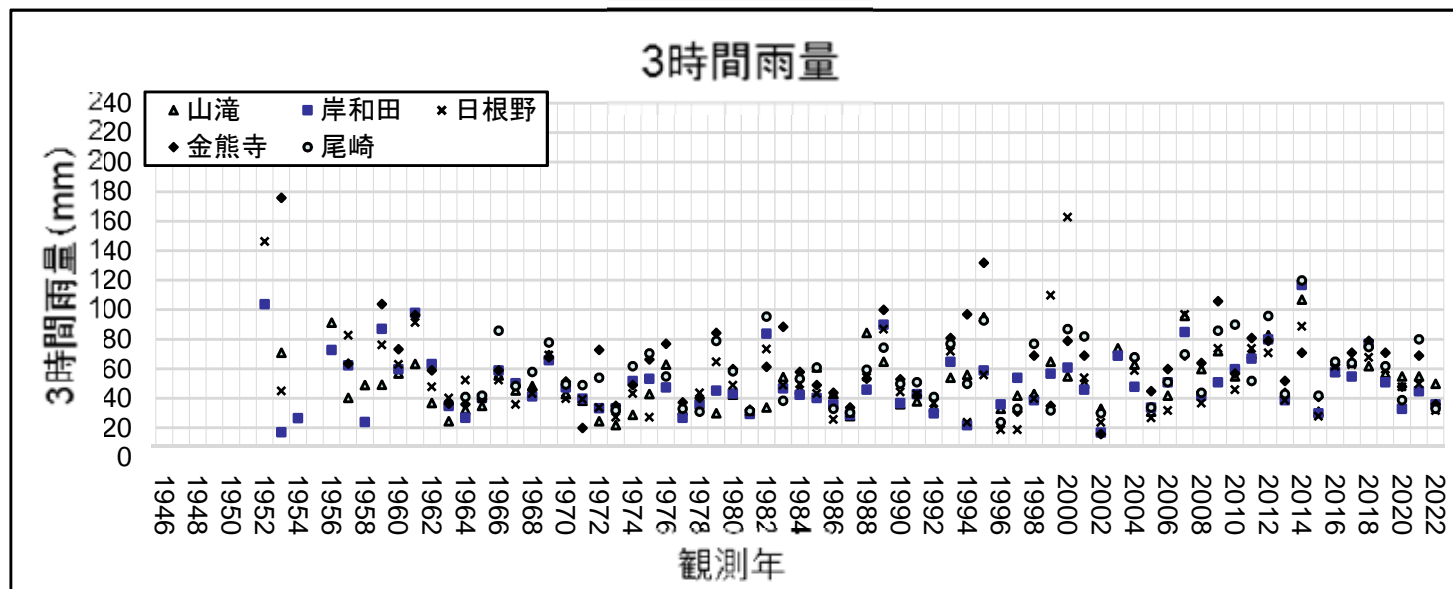
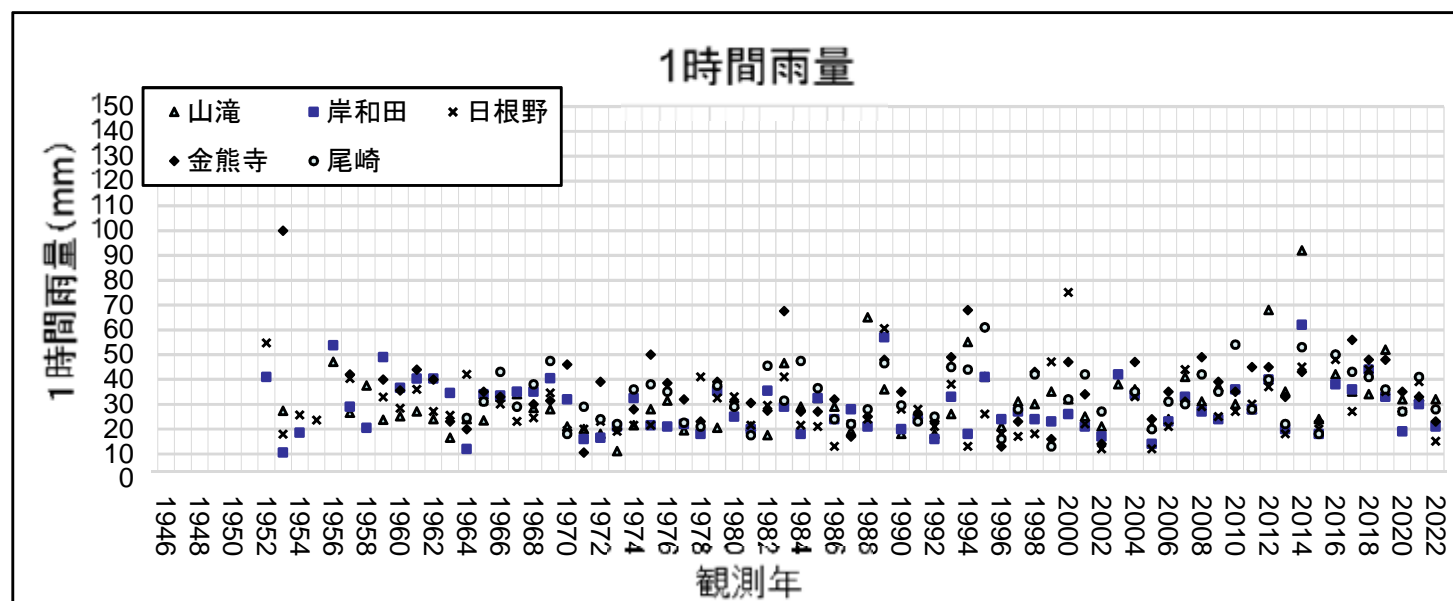


2. 地区別・各観測所の年最大雨量グラフ

【泉北地区】

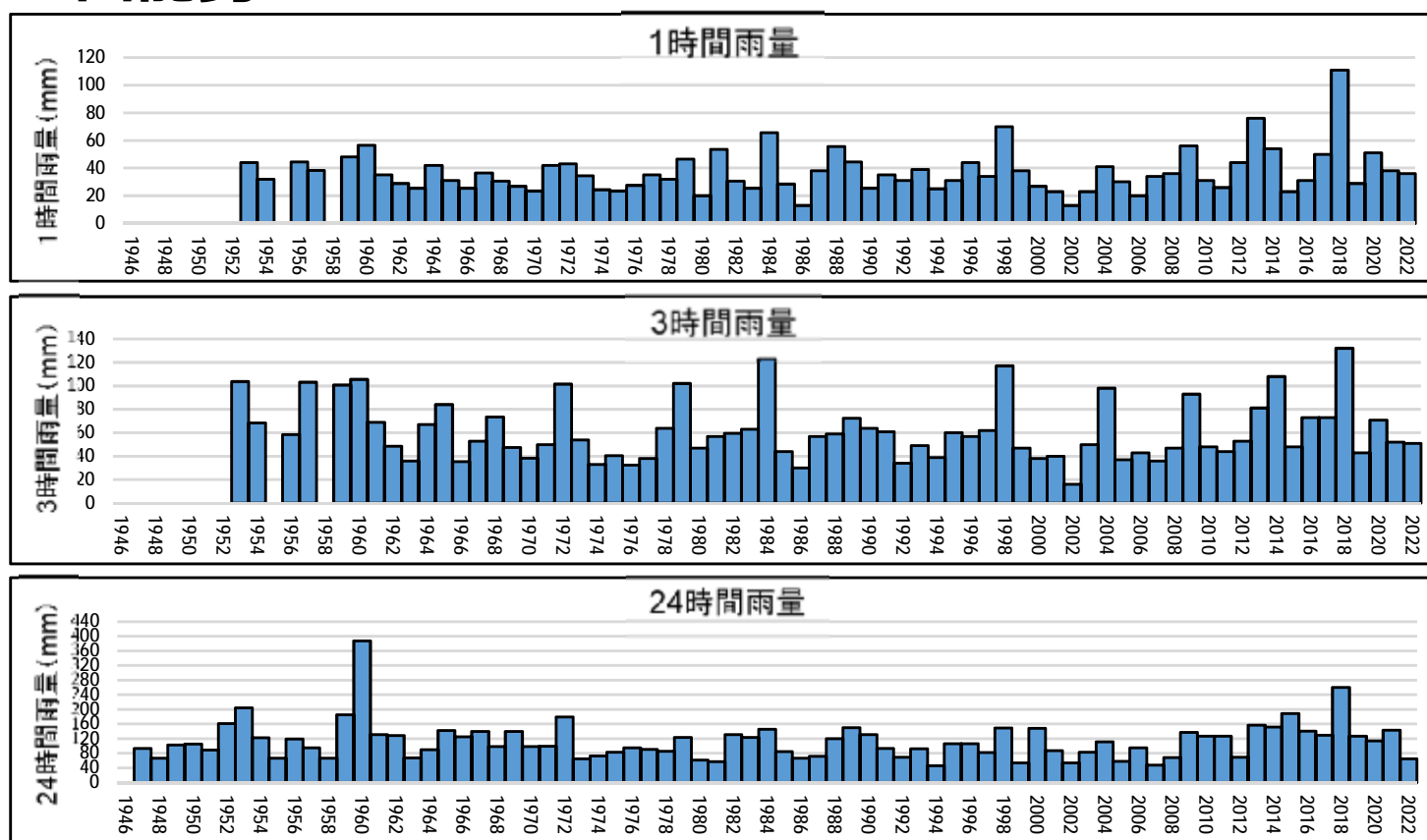


【泉南地区】

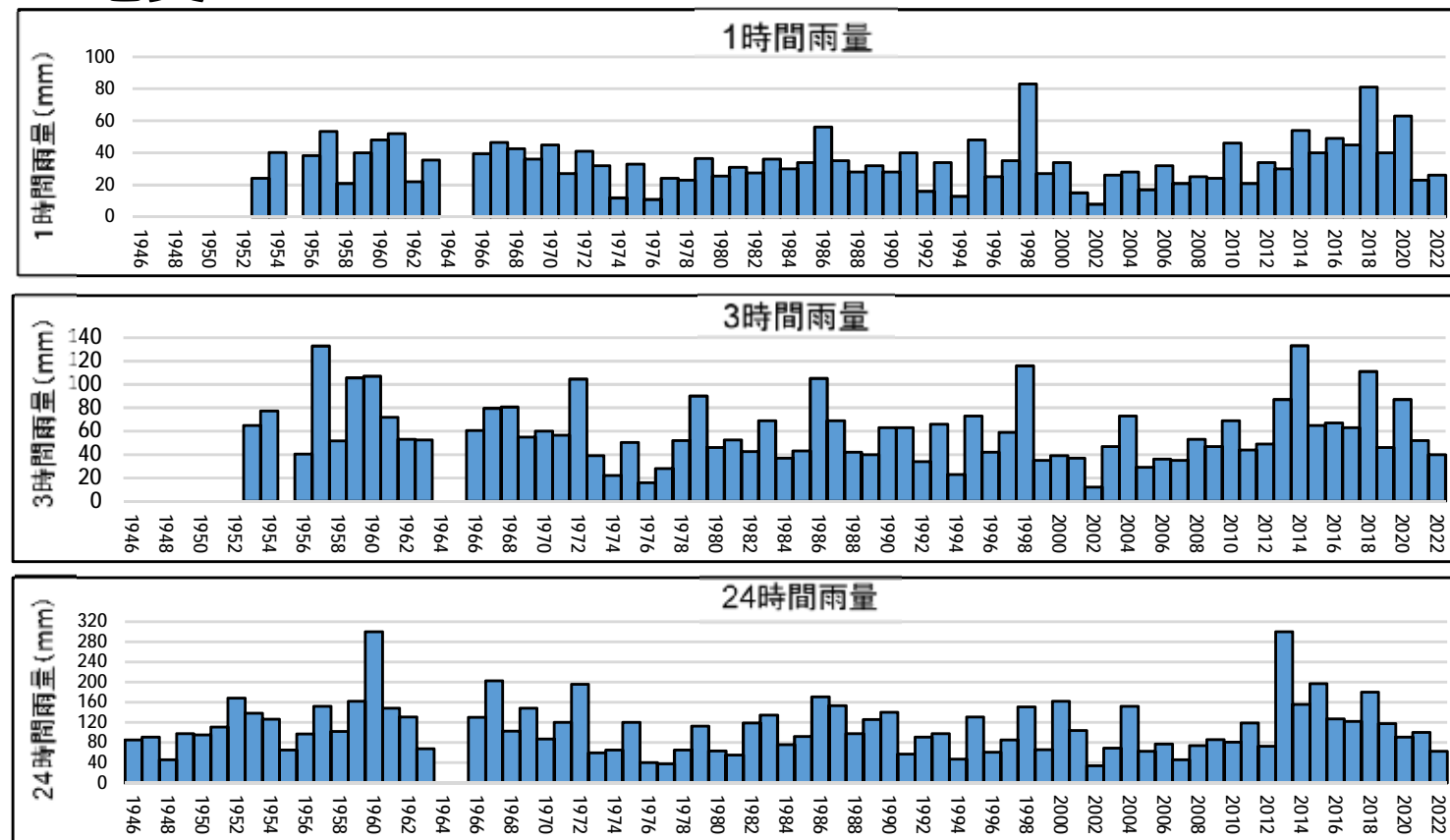


3. 各観測所の年最大降雨量グラフ

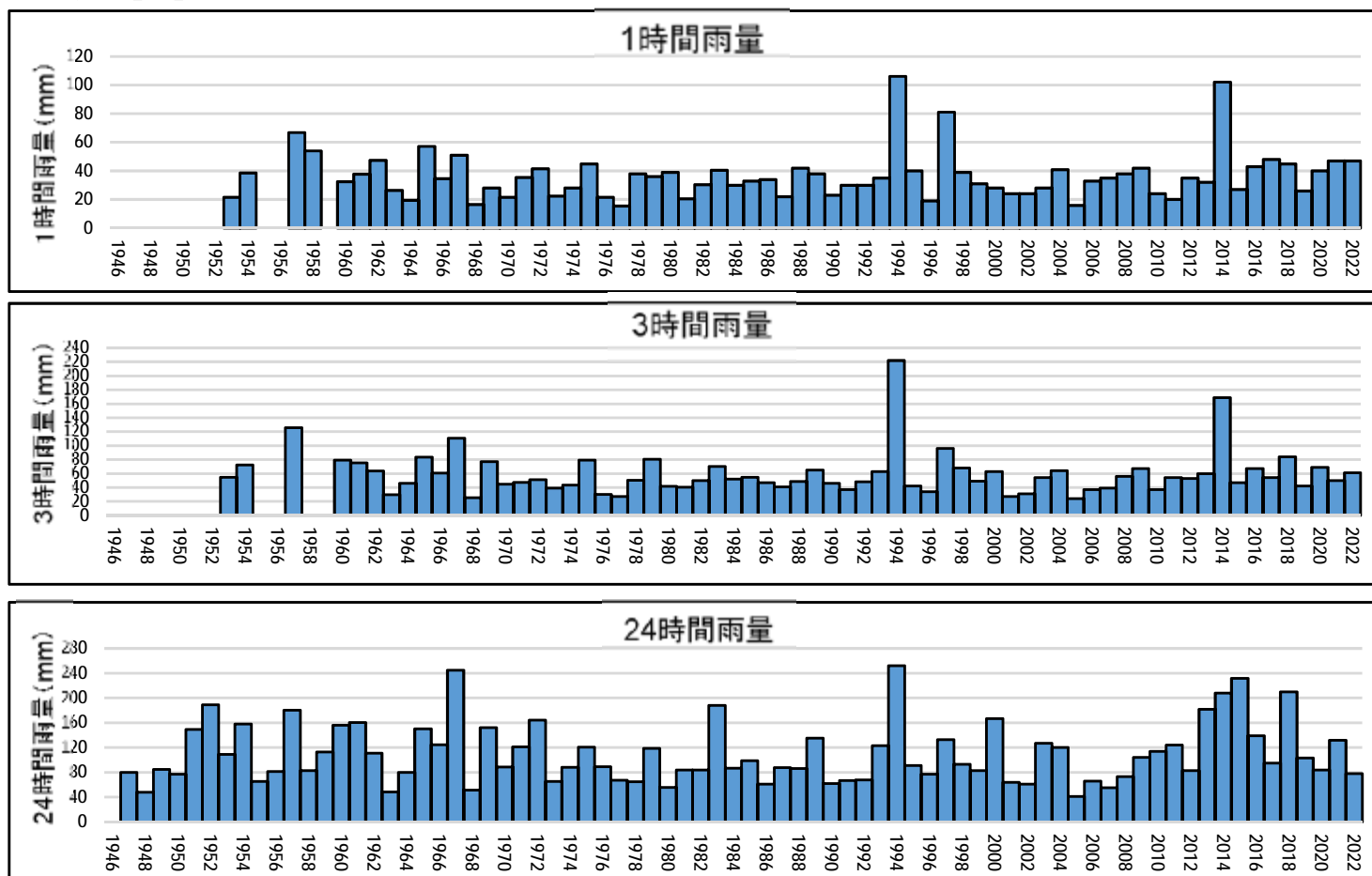
● 西能勢



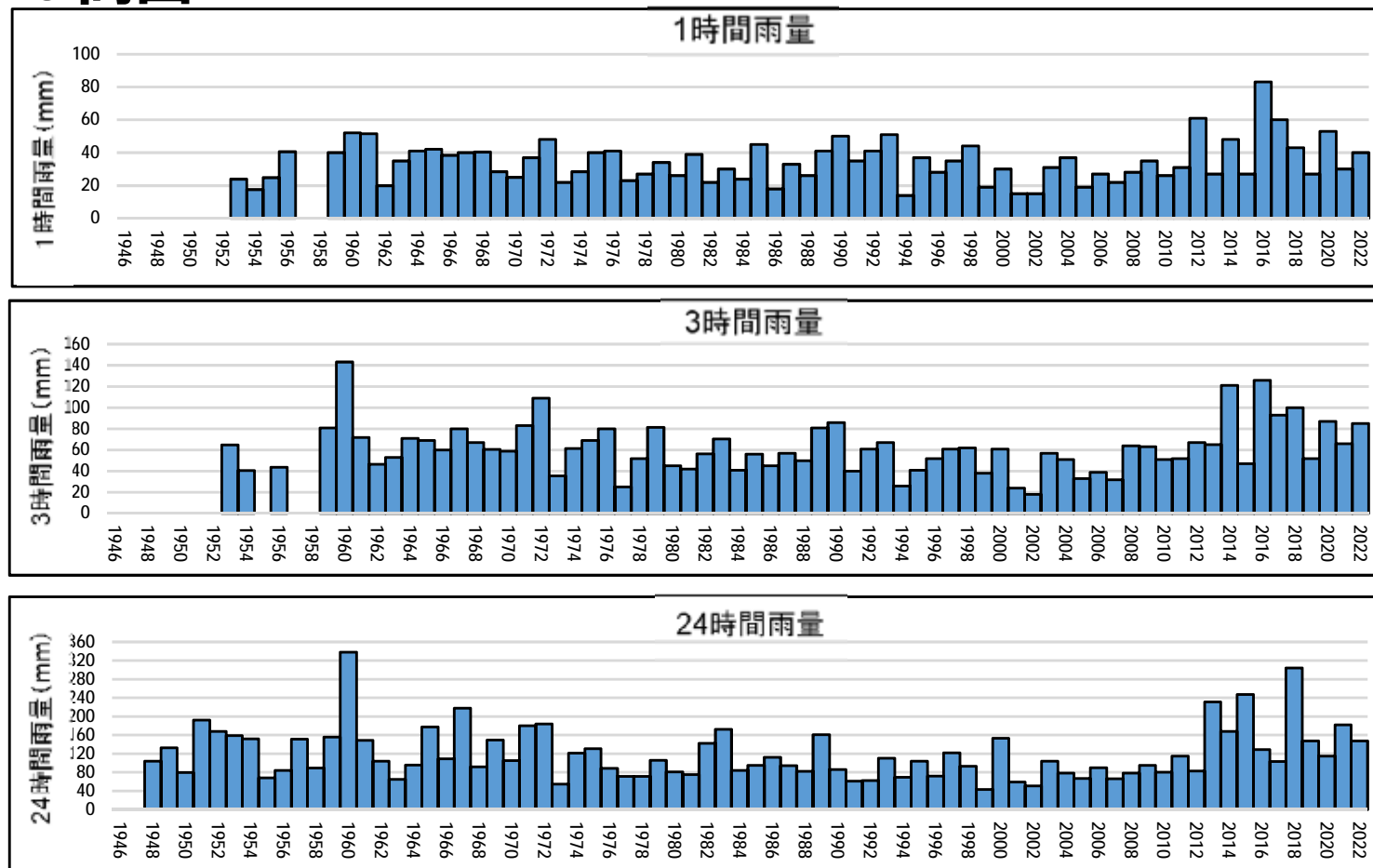
● 地黄



● 池田

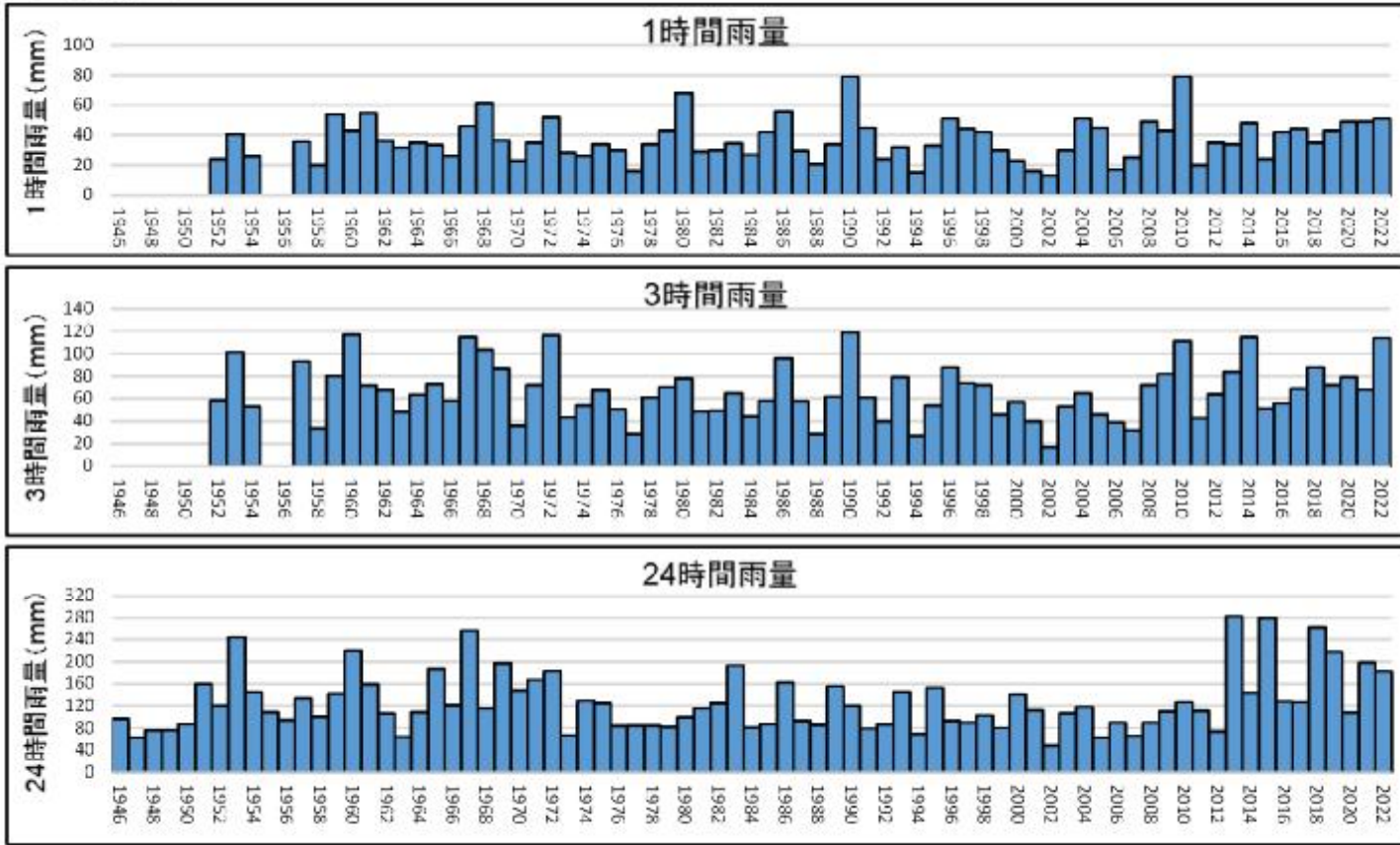


● 高山

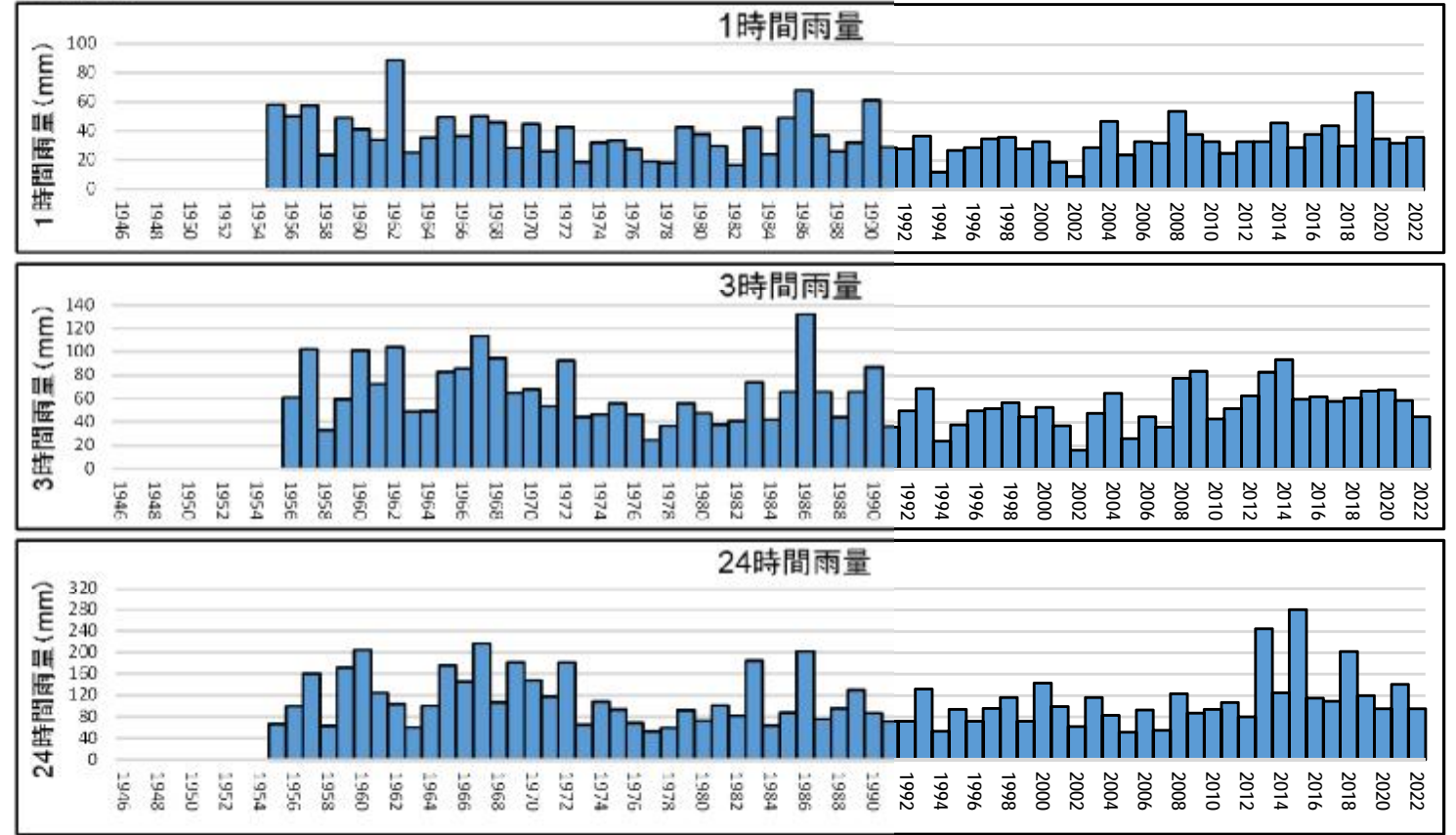


3. 各観測所の年最大降雨量グラフ

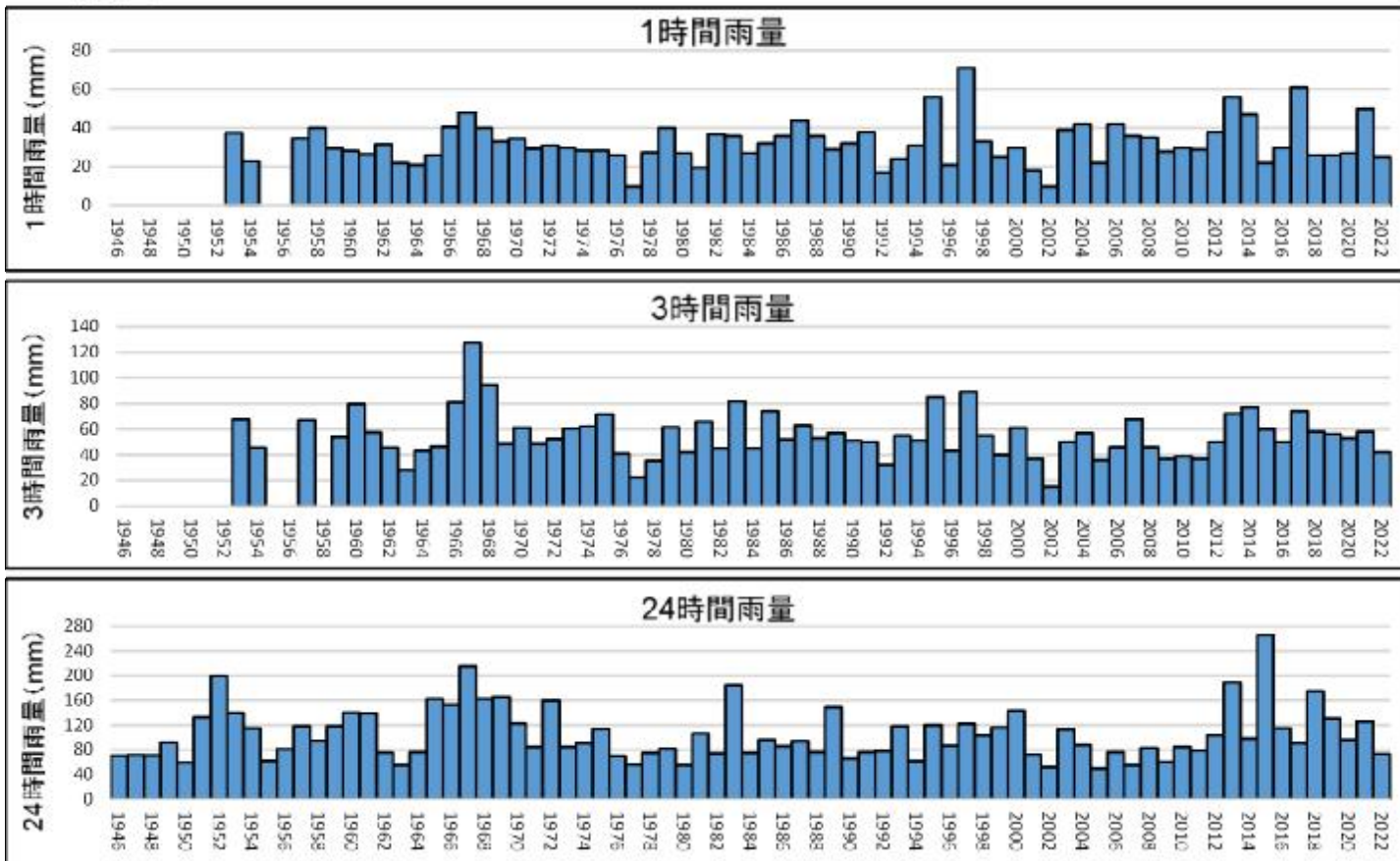
● 見山



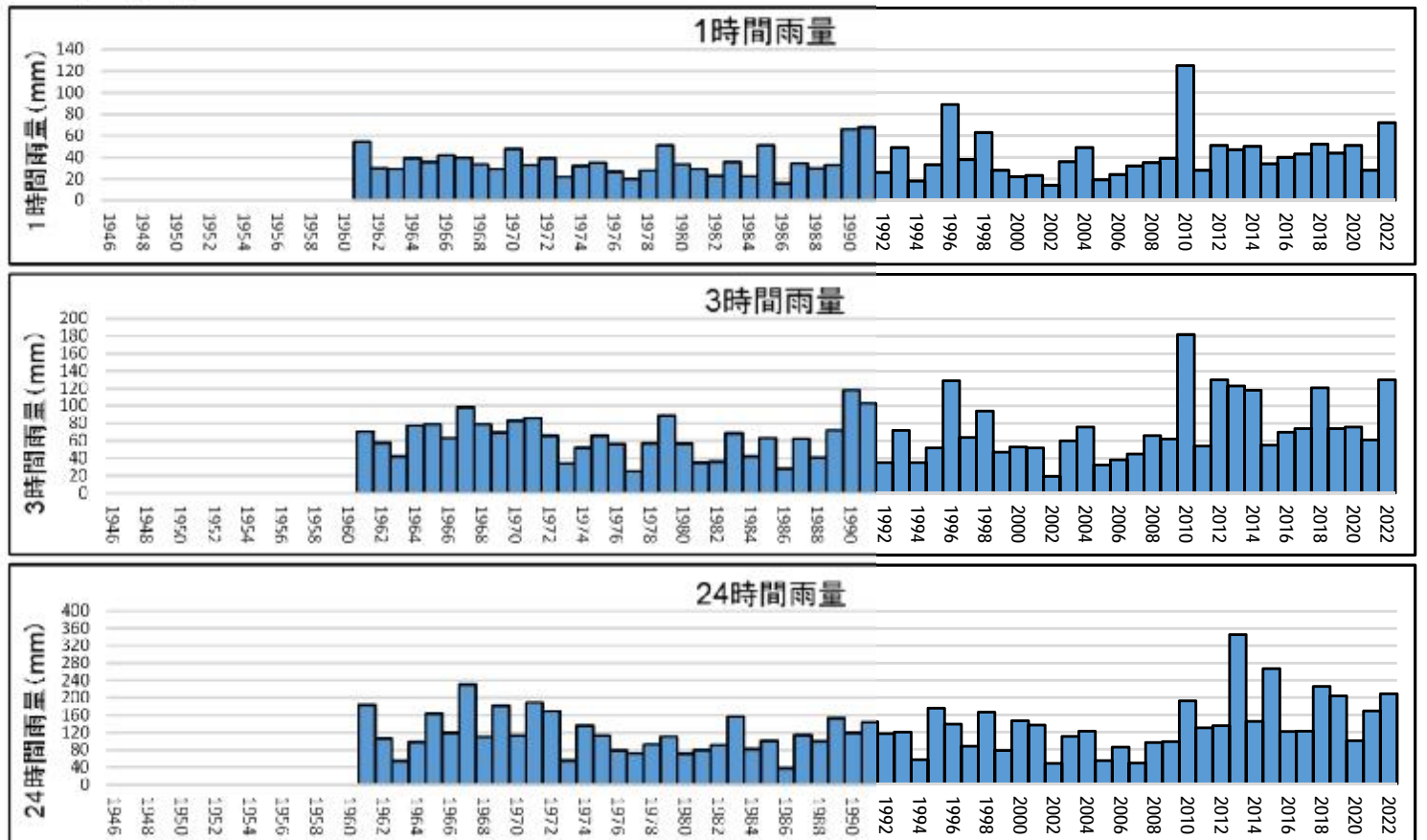
● 原



● 茨木

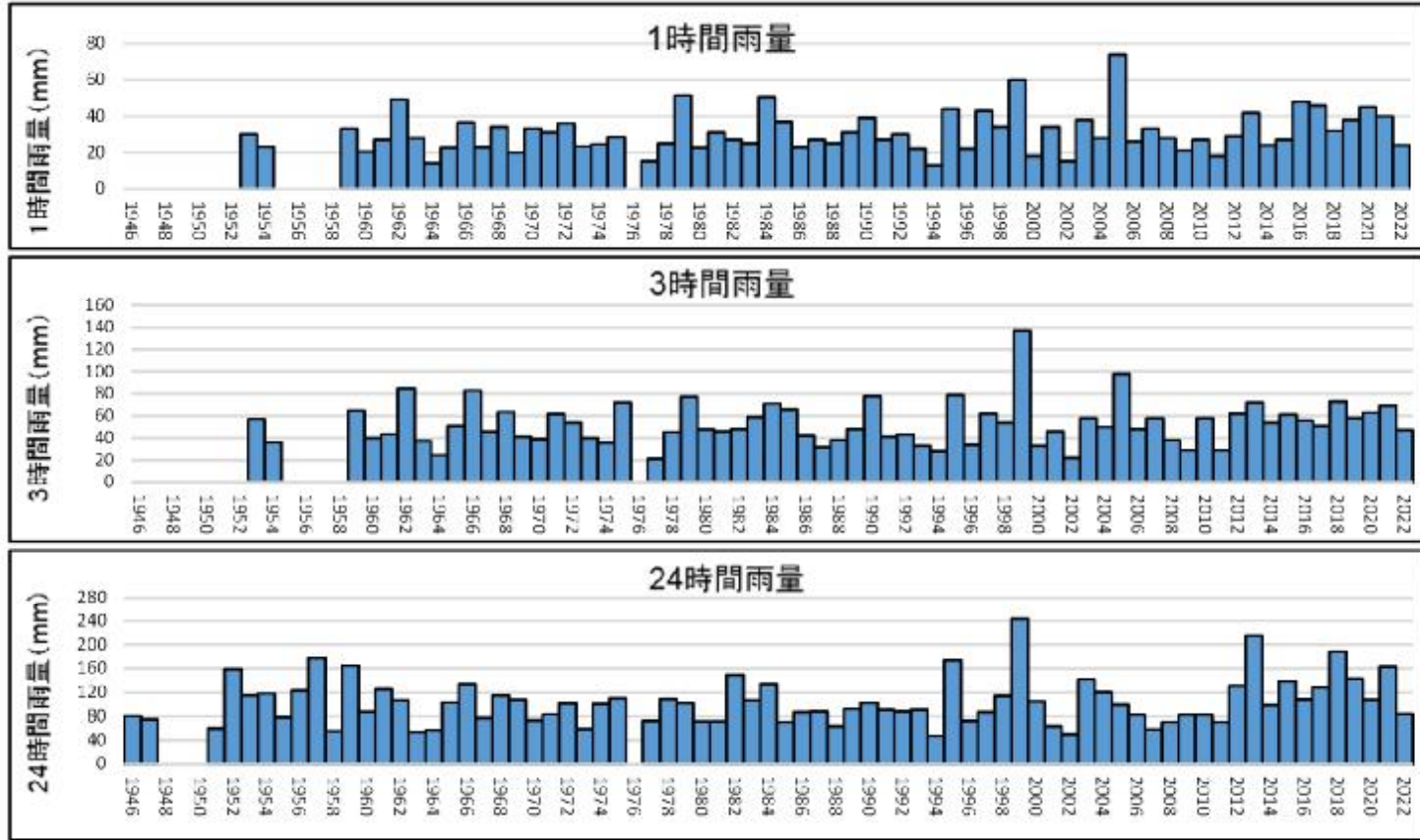


● 樫田

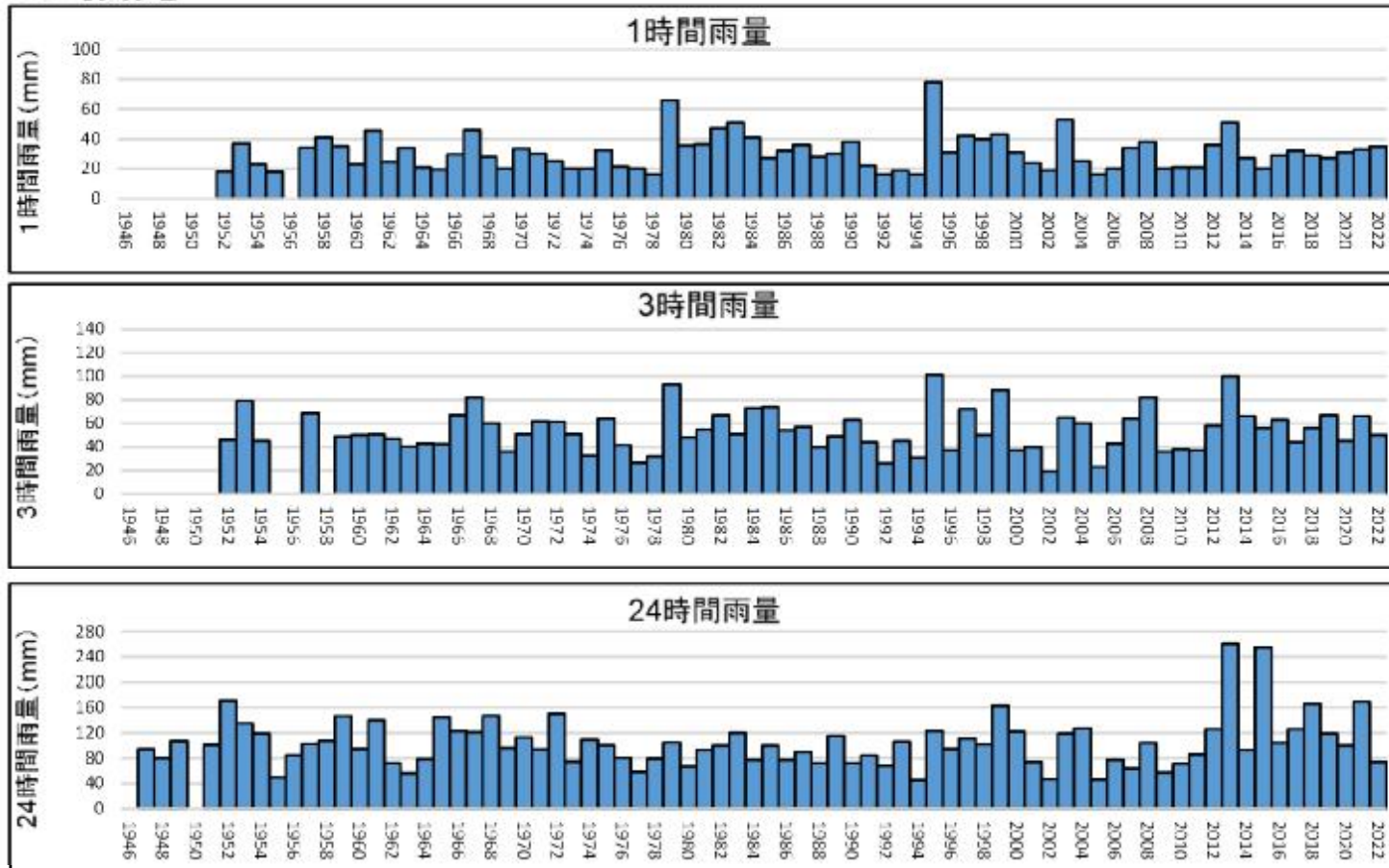


3. 各観測所の年最大降雨量グラフ

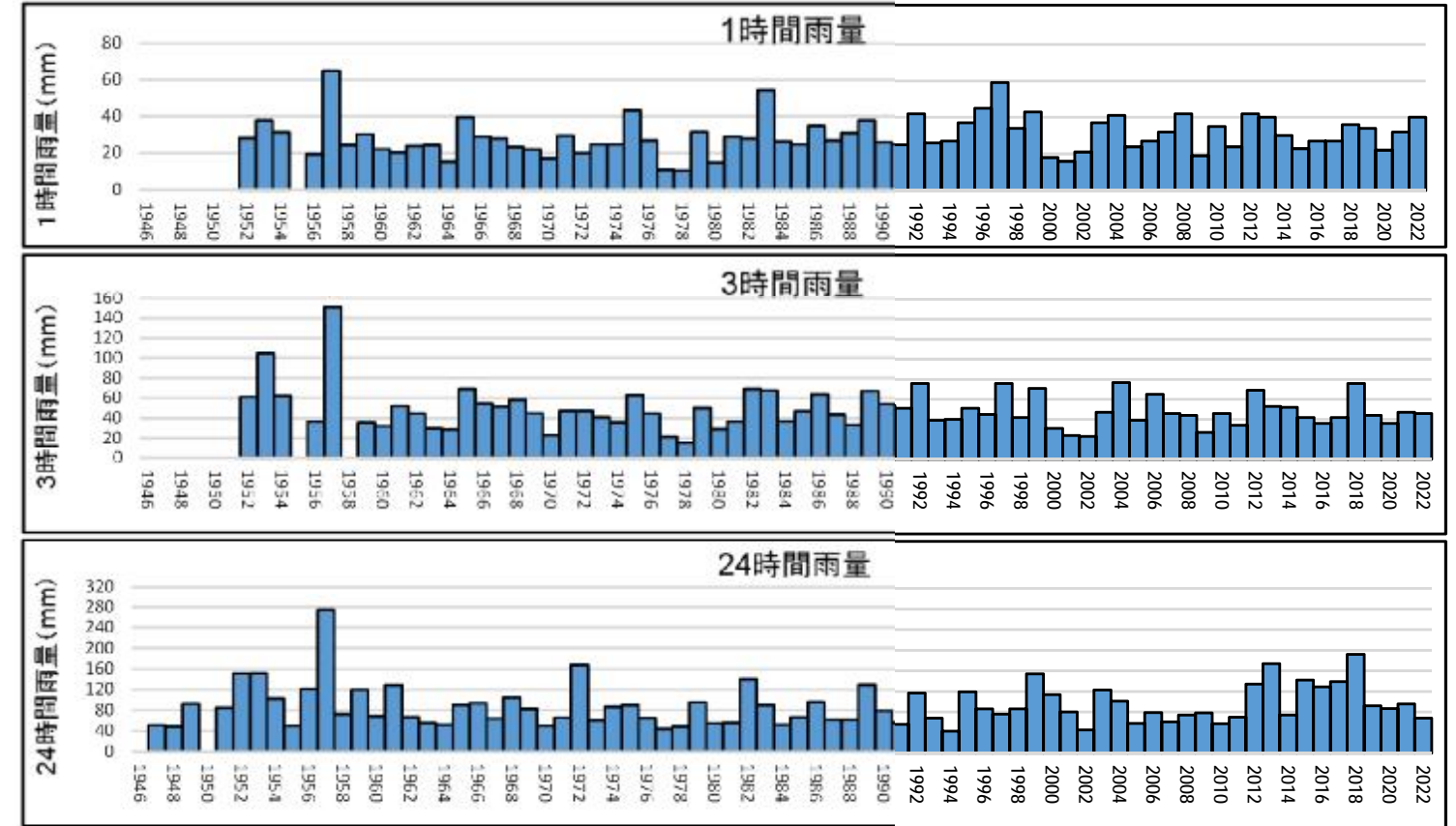
● 田原



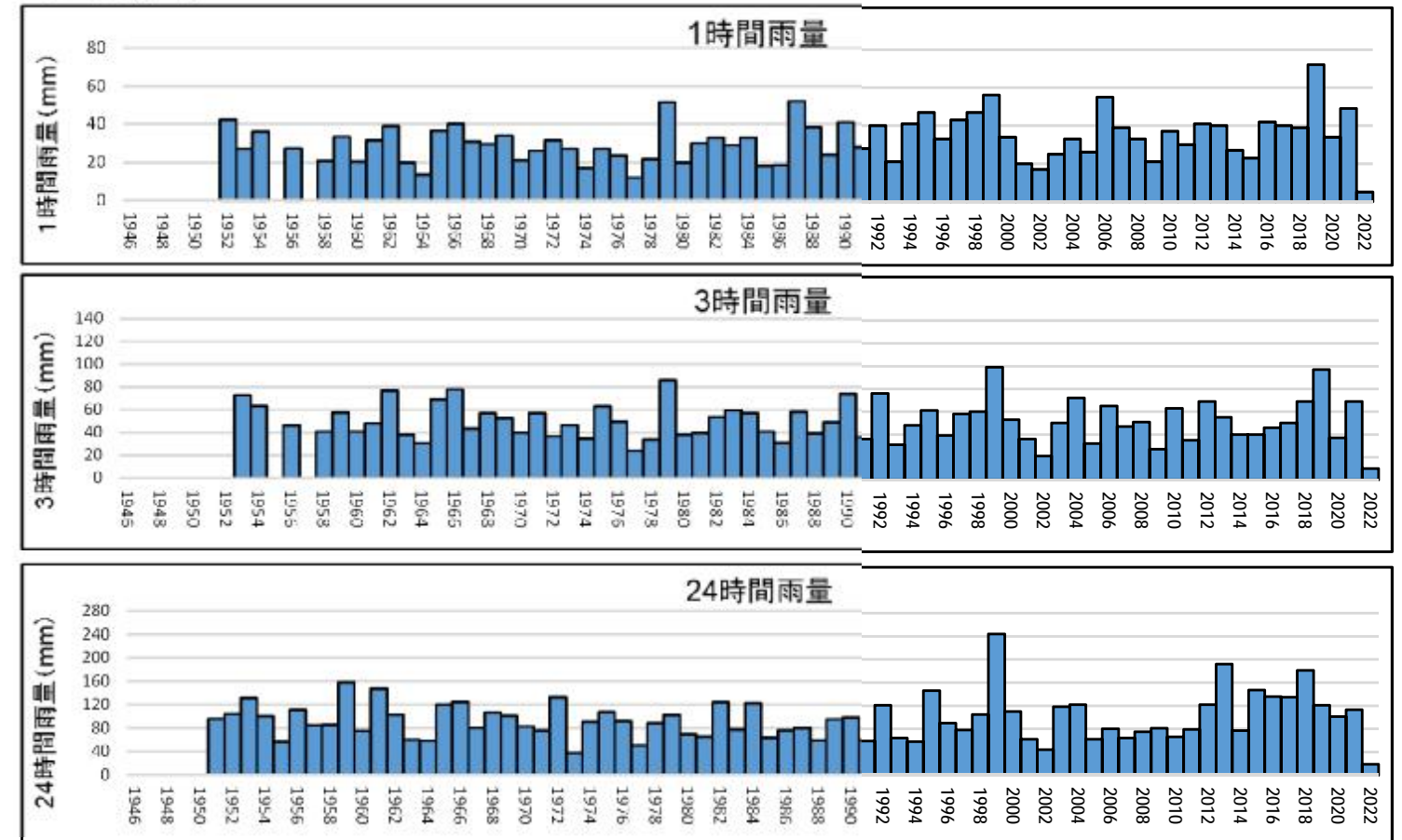
● 枚方



● 八尾

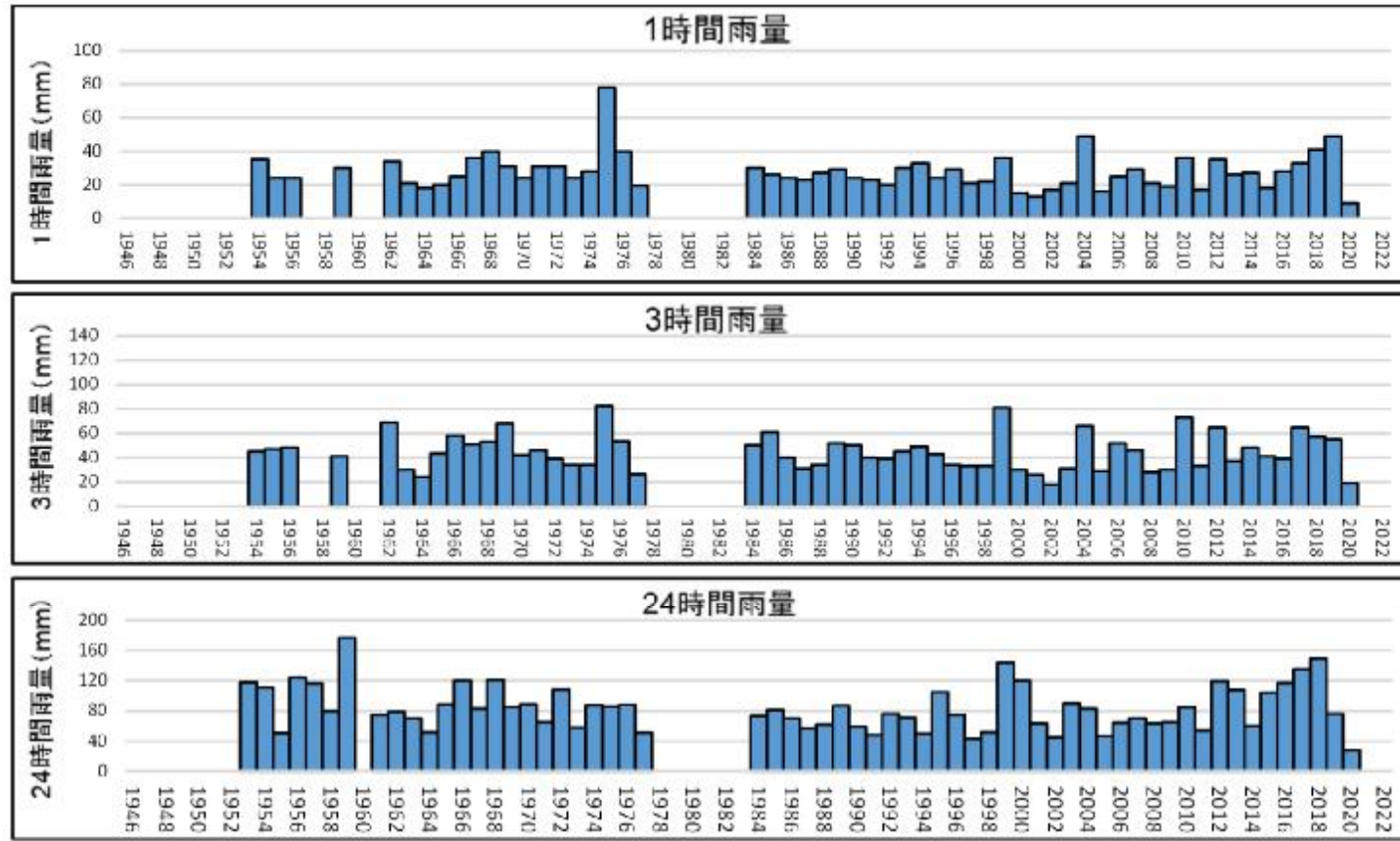


● 枚岡

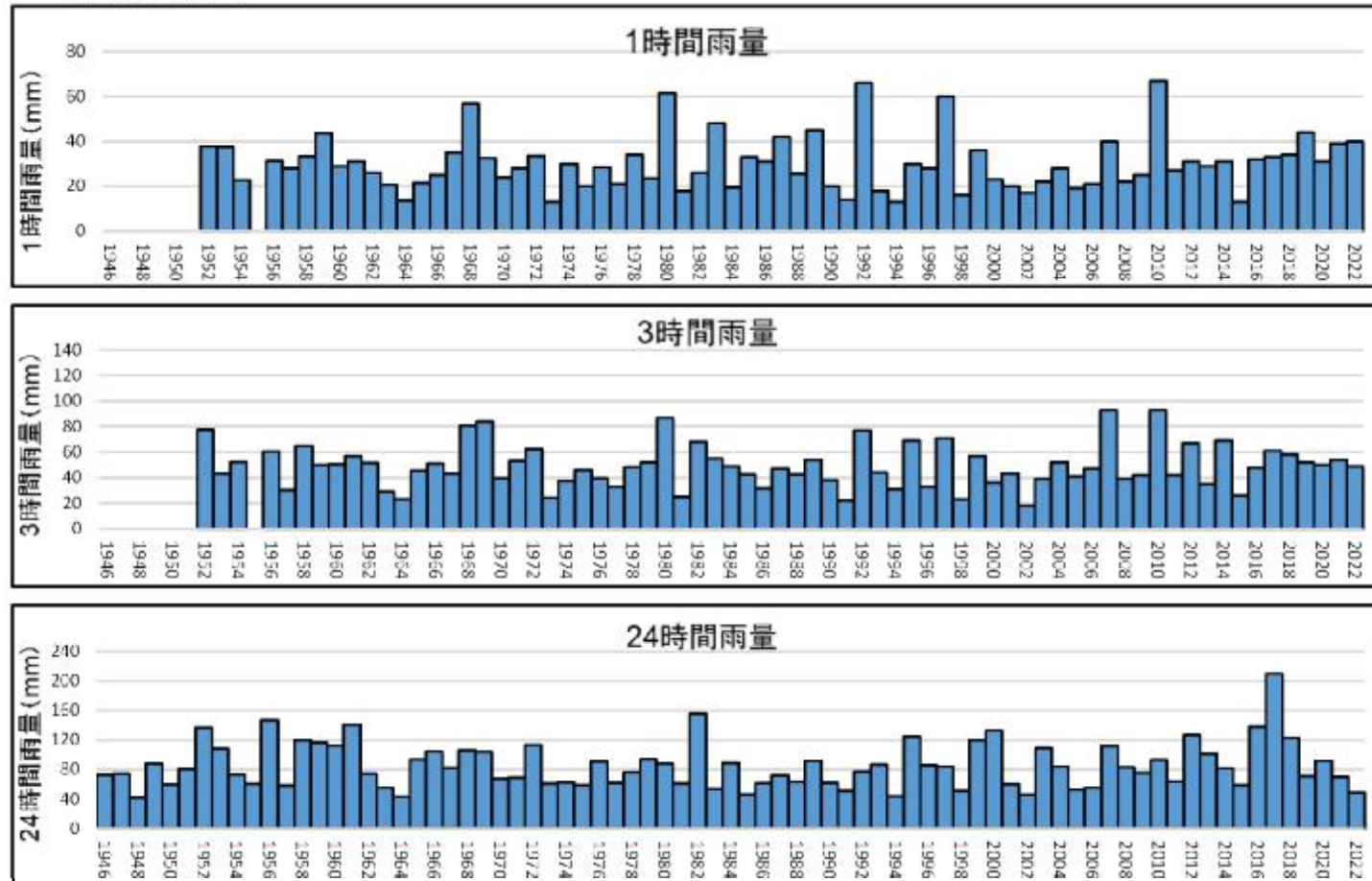


3. 各観測所の年最大降雨量グラフ

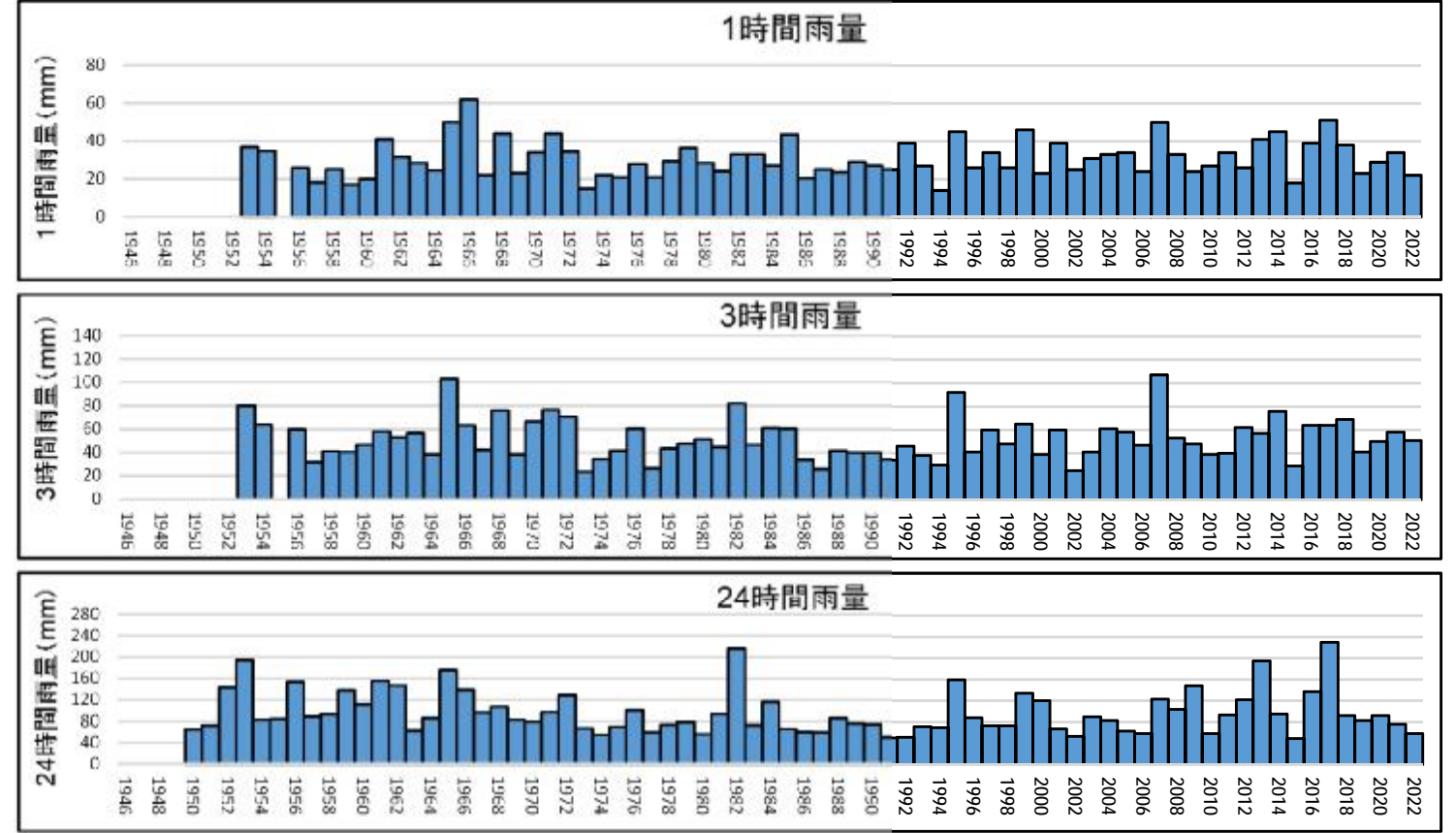
● 柏原



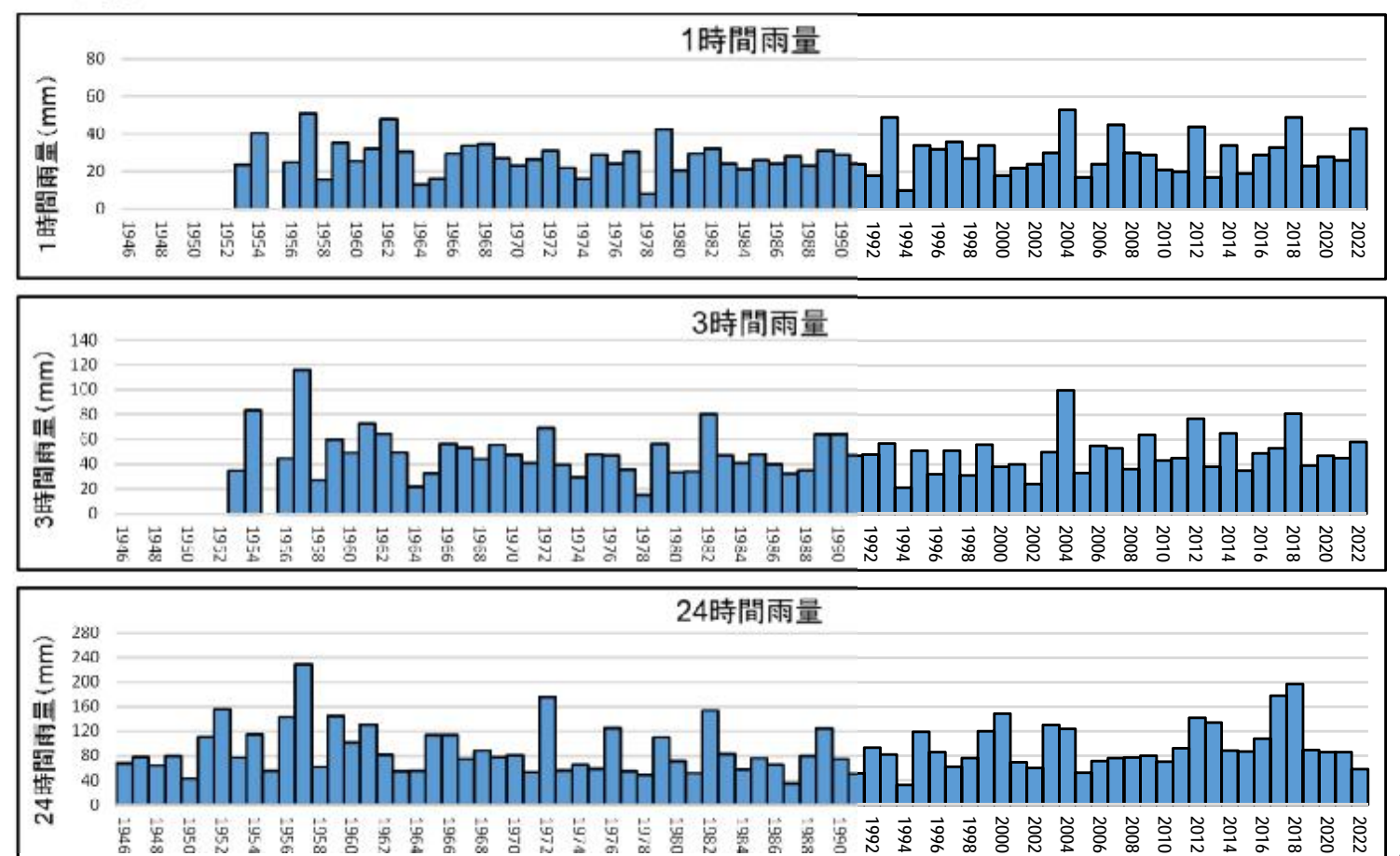
● 富田林



● 千早

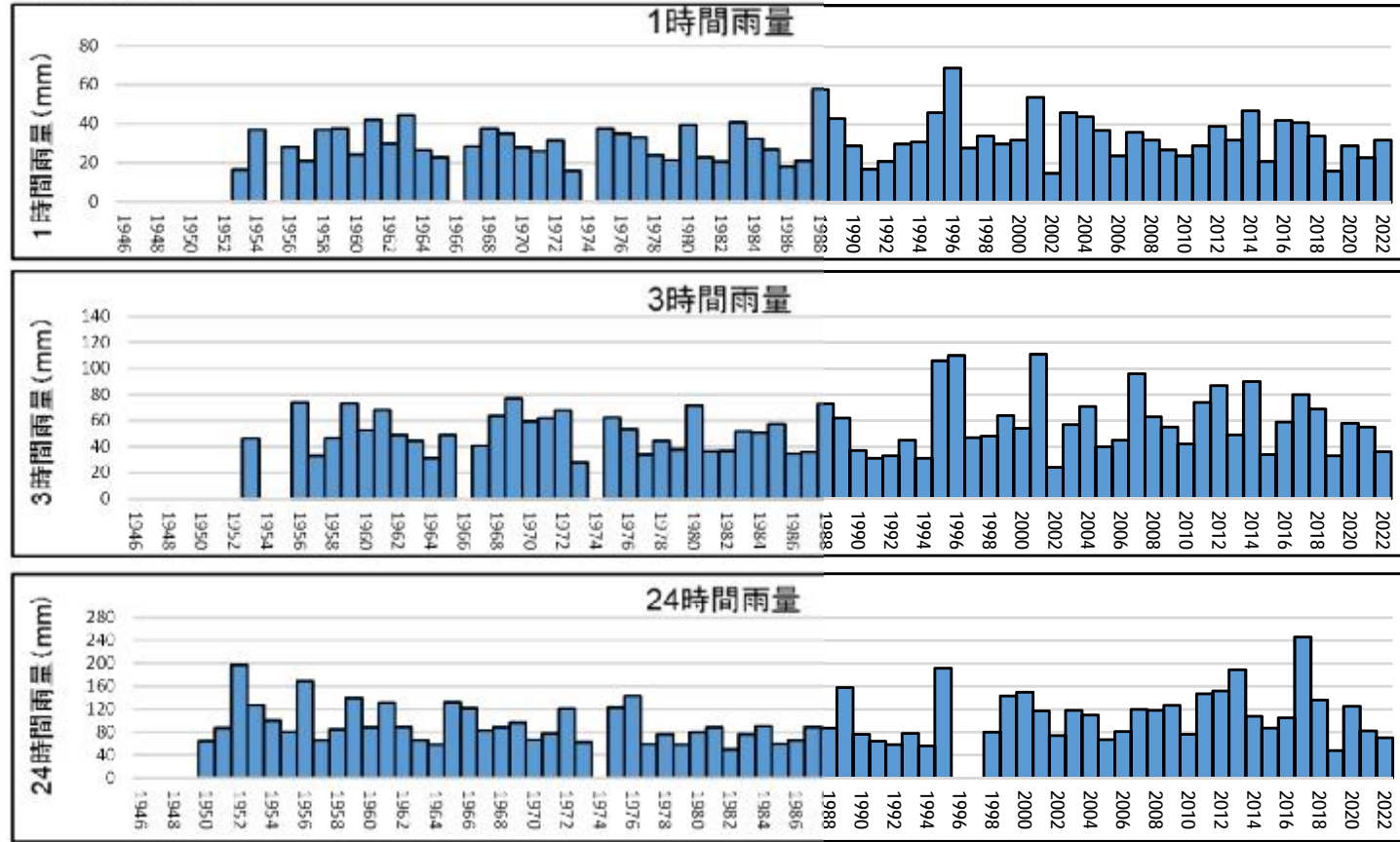


● 鳳

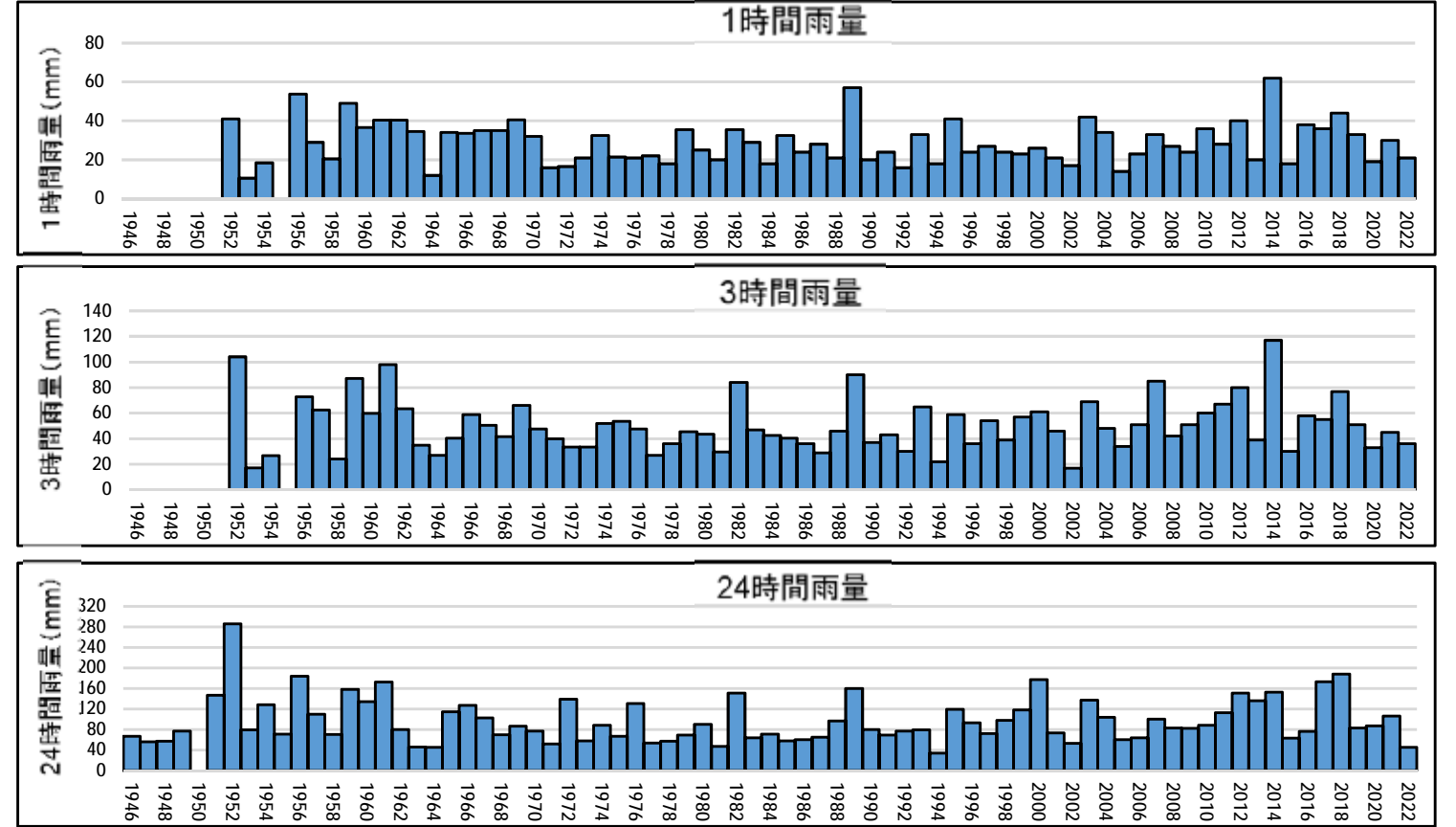


3. 各観測所の年最大降雨量グラフ

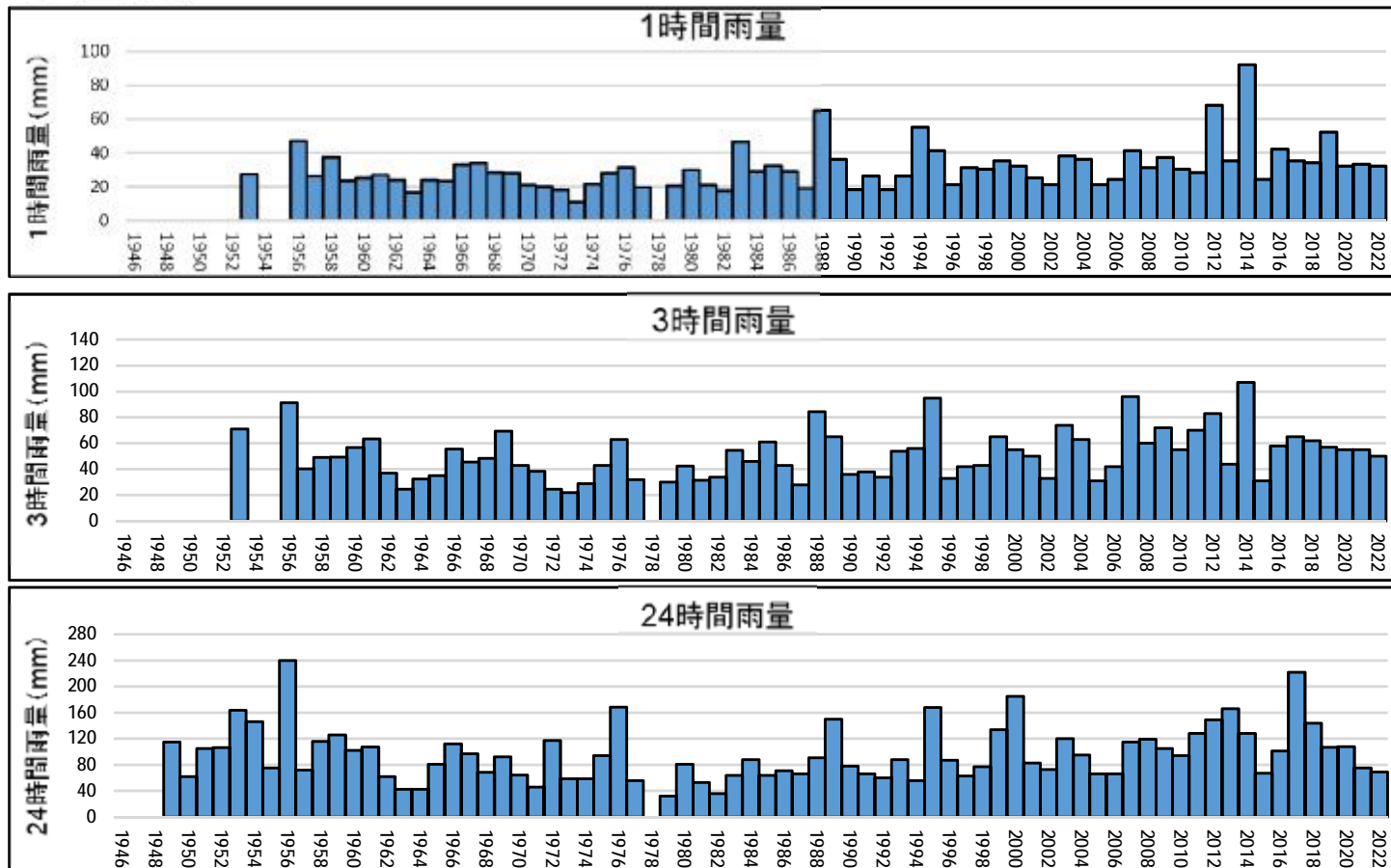
● 横山



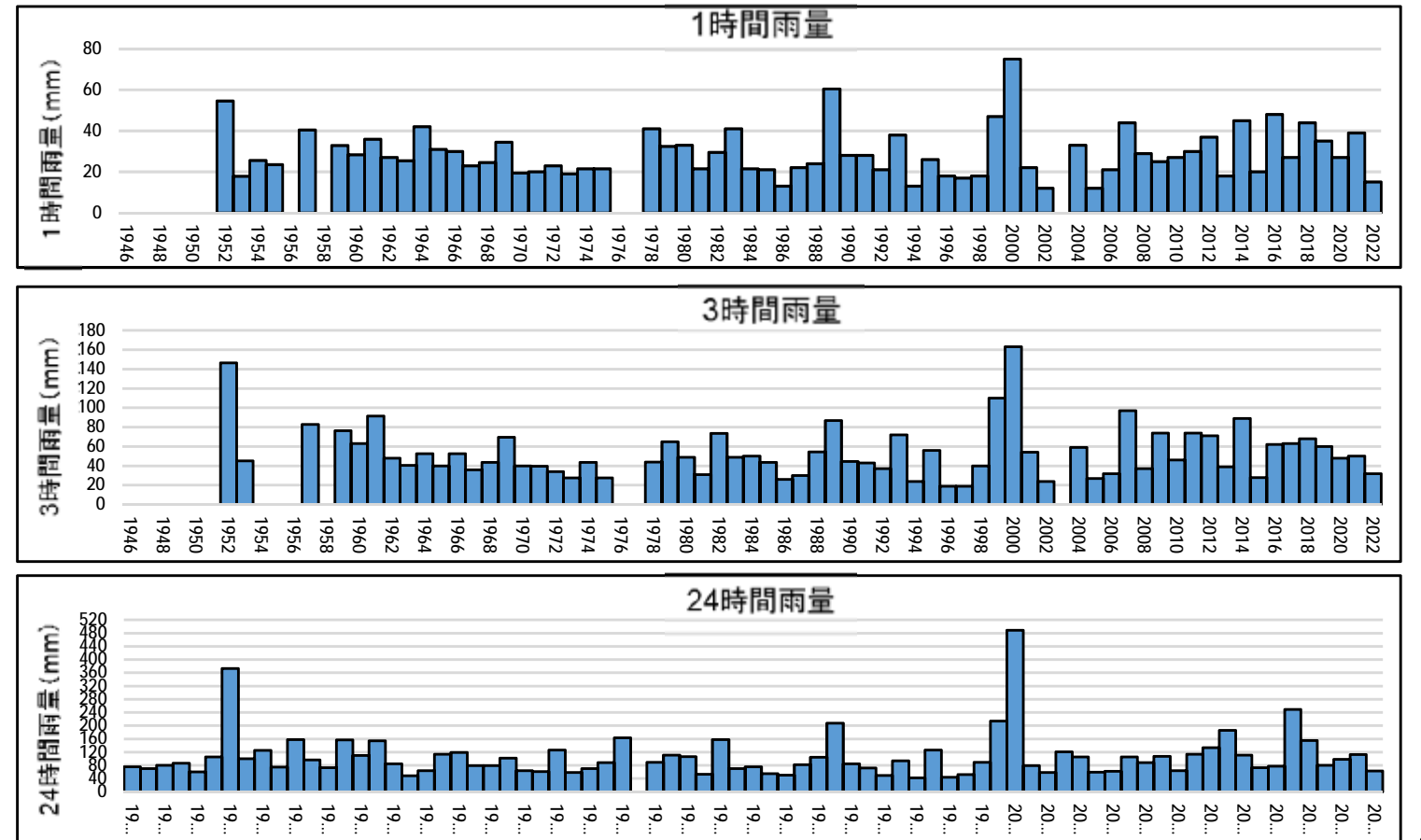
● 岸和田



● 山滝

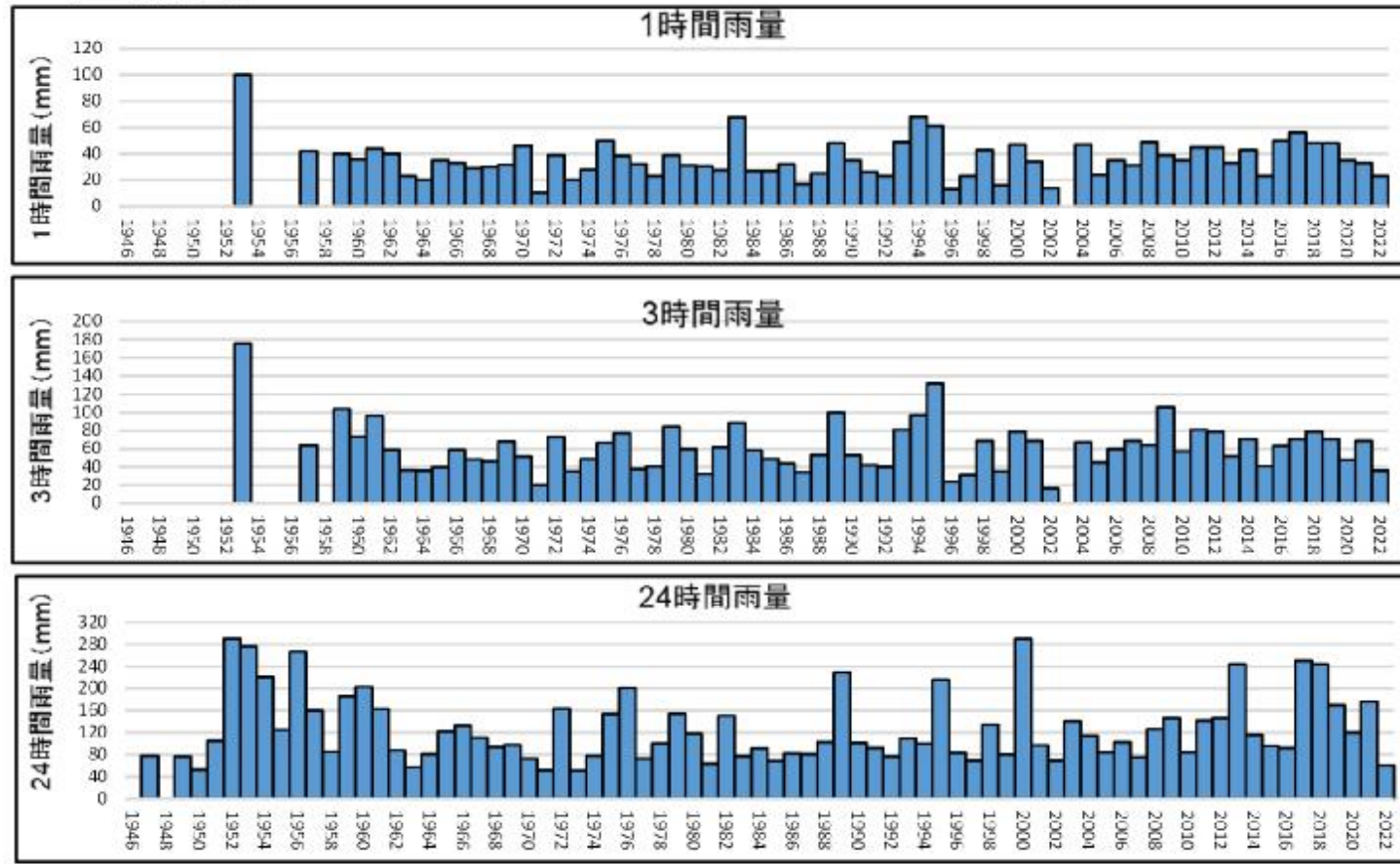


● 日根野

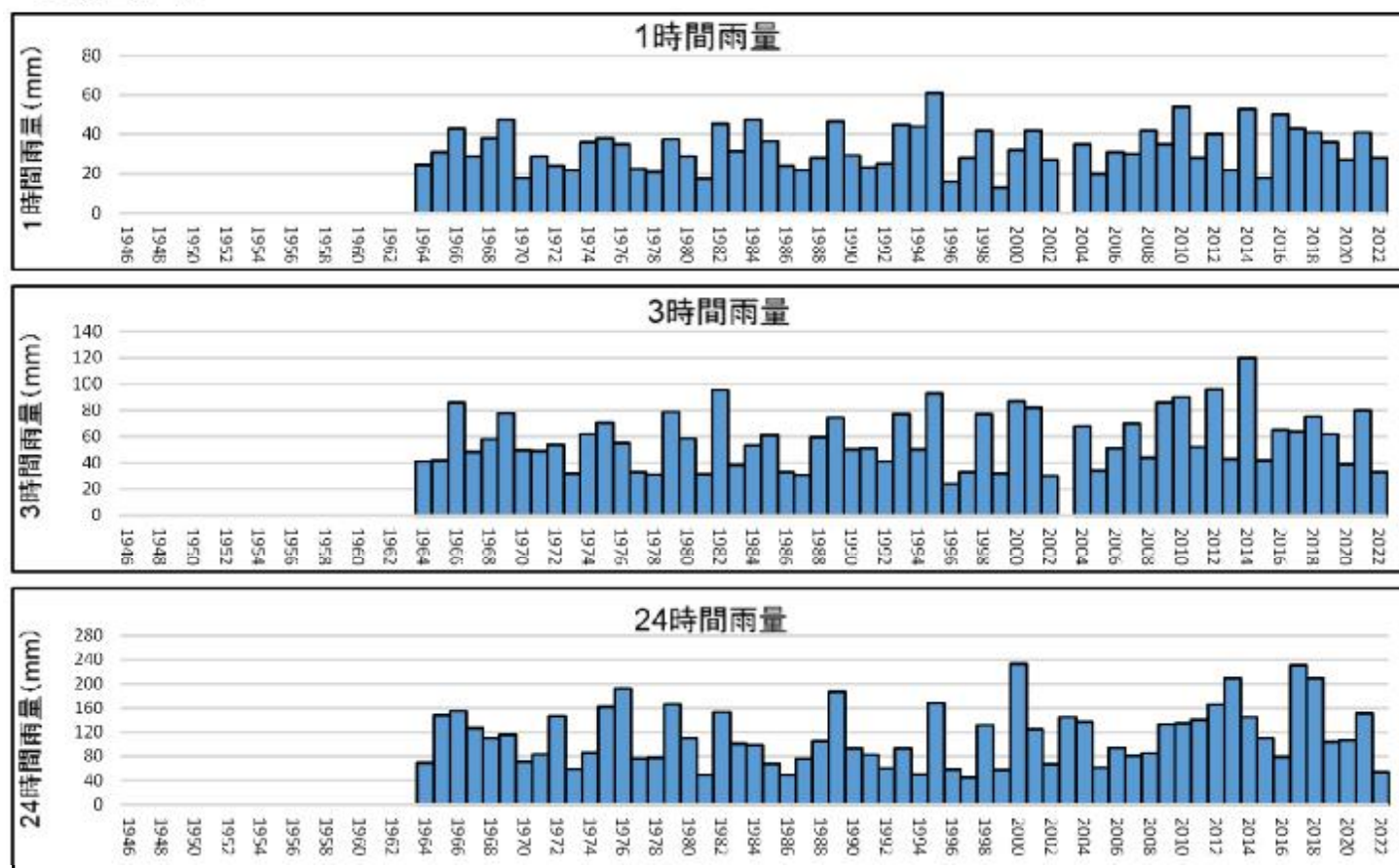


3. 各観測所の年最大降雨量グラフ

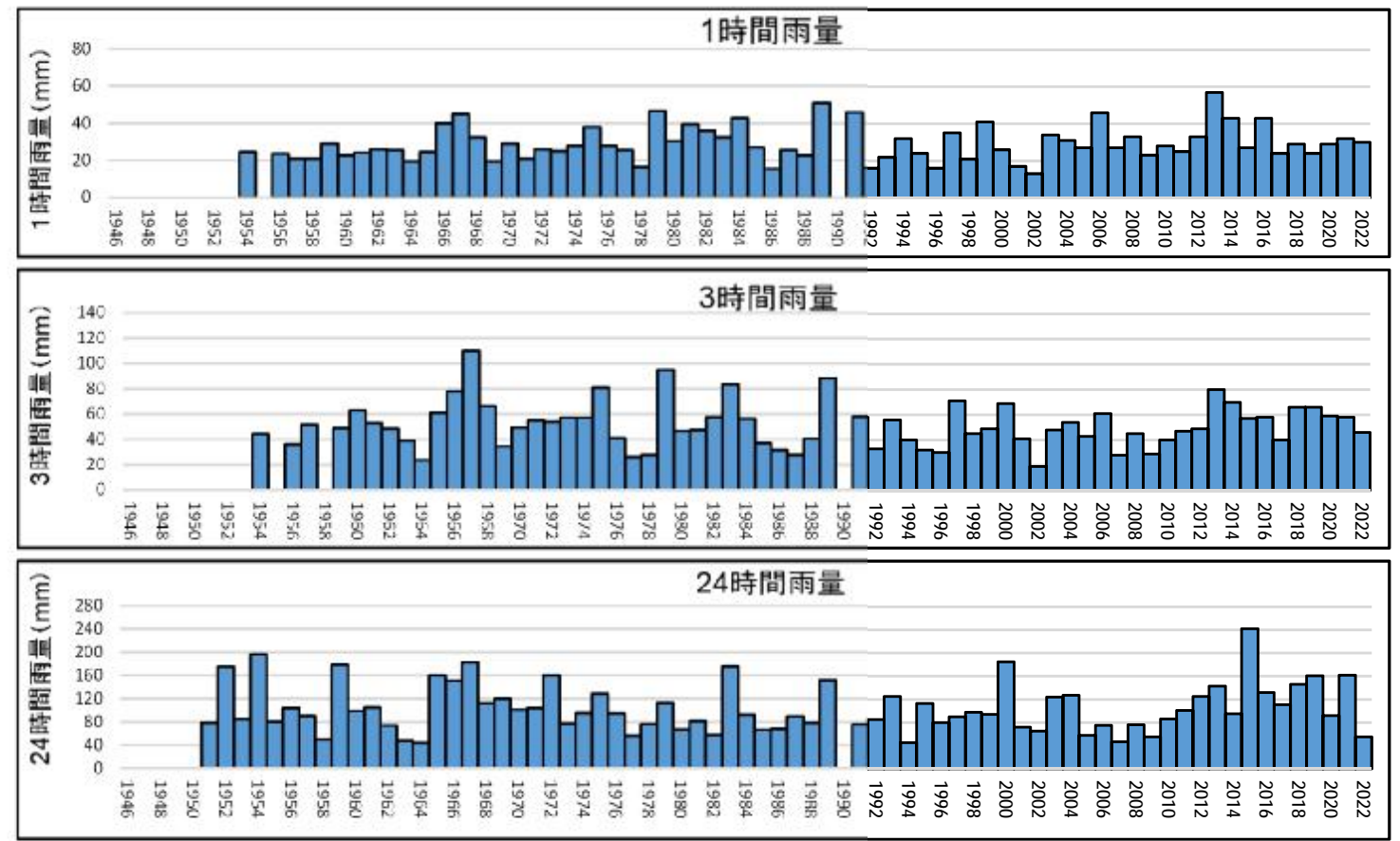
● 金熊寺



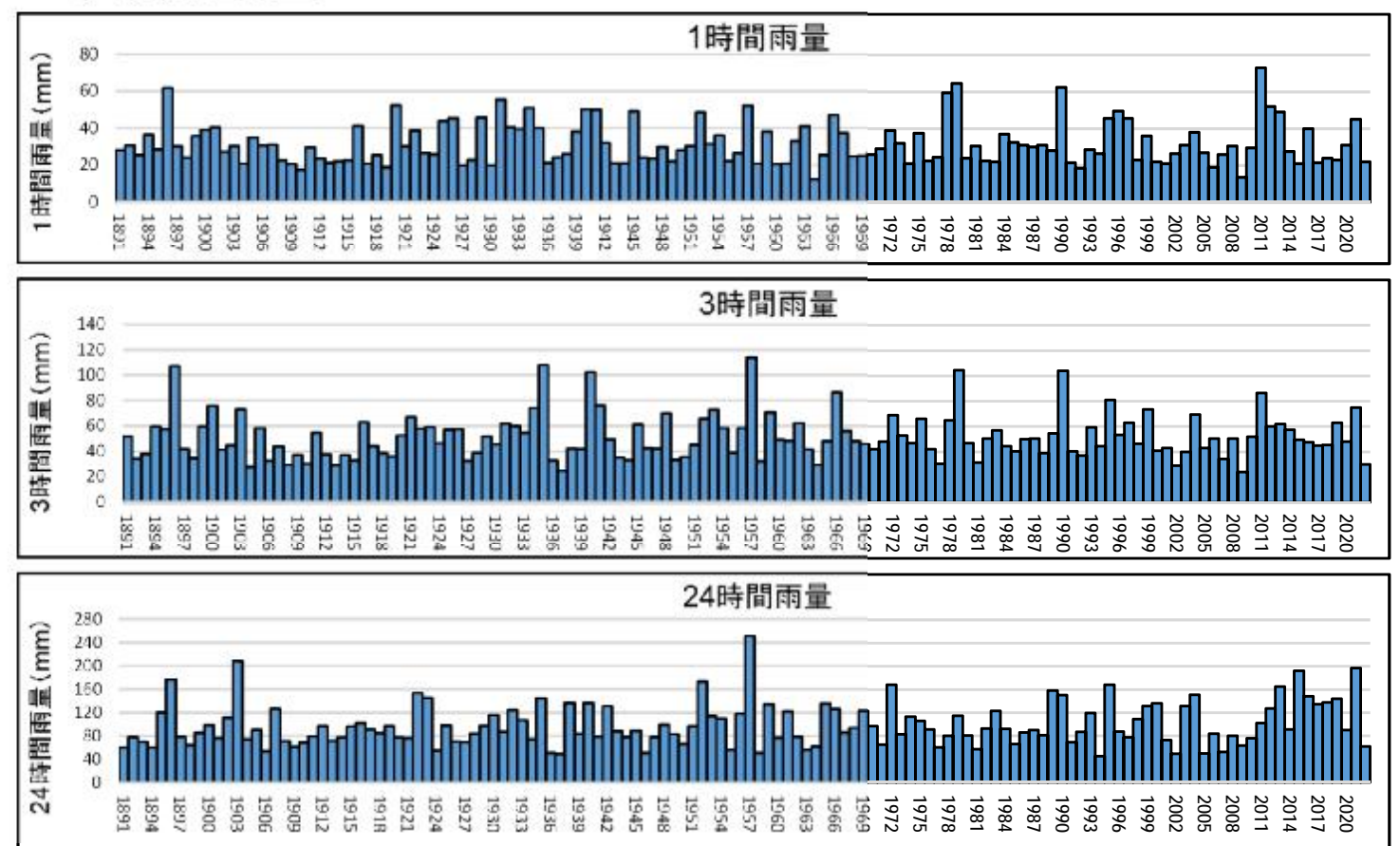
● 尾崎



● 三国



● 大阪管区



3. 各観測所の確率雨量表

解析データ期間：昭和21年～平成7年

観測所	確率年	確率降雨量 (mm)				
		降雨継続時間				
		60分	120分	180分	360分	1440分
西能勢	10	57.7	85.4	98.8	133.1	214.1
	30	69.6	105.9	122.6	166.5	272.9
	100	82.4	128.0	148.2	202.3	335.9
	200	89.7	140.6	162.9	222.8	371.9
池田	10	67.0	95.6	112.9	150.6	202.0
	30	84.6	124.6	146.9	194.7	255.0
	100	103.4	155.7	183.3	242.1	311.8
	200	114.2	173.5	204.1	269.2	344.3
地黄	10	56.2	81.2	100.3	133.9	206.3
	30	68.3	101.0	125.9	169.5	260.3
	100	81.4	122.3	153.4	207.7	318.2
	200	88.8	134.4	169.1	229.6	351.3
高山	10	55.3	79.4	96.2	140.1	220.8
	30	66.4	96.9	118.2	175.3	278.2
	100	78.3	115.6	141.9	213.0	339.6
	200	85.1	126.3	155.4	234.5	374.8
見山	10	63.6	87.5	105.0	150.6	216.6
	30	78.5	108.9	129.7	187.5	267.8
	100	94.4	131.8	156.3	227.0	322.8
	200	103.6	144.9	171.5	249.7	354.3
茨木	10	49.5	72.4	87.7	124.3	184.4
	30	58.7	87.4	106.9	154.5	228.6
	100	68.5	103.6	127.6	186.9	276.0
	200	74.2	112.9	139.4	205.4	303.2
原	10	67.6	90.7	102.4	140.3	204.9
	30	84.4	114.1	127.8	176.0	257.3
	100	102.4	139.1	155.0	214.2	313.6
	200	112.7	153.5	170.6	236.1	345.8
櫻田	10	60.5	83.8	96.9	135.5	207.3
	30	74.1	103.4	119.2	168.5	257.3
	100	88.6	124.4	143.2	203.8	310.9
	200	96.9	136.5	156.9	224.0	341.5

観測所	確率年	確率降雨量 (mm)				
		降雨継続時間				
		60分	120分	180分	360分	1440分
田原	10	48.1	65.1	76.8	98.2	164.3
	30	58.1	79.7	93.7	117.2	199.8
	100	68.9	95.3	111.7	137.6	237.9
	200	75.1	104.3	122.1	149.2	259.7
枚方	10	56.7	71.1	79.9	96.9	158.3
	30	71.0	86.7	96.6	114.2	189.4
	100	86.2	103.4	114.6	132.7	222.7
	200	95.0	113.0	124.9	143.3	241.8
八尾	10	48.9	71.8	85.8	117.5	168.1
	30	60.1	90.9	108.8	151.5	214.5
	100	72.1	111.4	133.5	187.9	264.2
	200	78.9	123.1	147.6	208.7	292.6
枚岡	10	49.8	62.9	74.4	95.3	150.9
	30	60.5	75.7	89.6	113.6	182.2
	100	71.8	89.3	105.9	133.3	215.8
	200	78.4	97.1	115.2	144.6	235.0
柏原	10	50.7	59.9	66.0	80.2	141.1
	30	62.5	72.2	78.8	94.5	171.8
	100	75.1	85.4	92.5	109.9	204.8
	200	82.4	92.9	100.3	118.7	223.6
富田林	10	54.1	65.3	74.8	93.3	140.1
	30	67.4	80.0	91.3	112.2	171.2
	100	81.6	95.7	109.0	132.5	204.5
	200	89.8	104.7	119.1	144.1	223.6
千早	10	50.3	68.3	79.6	109.4	176.2
	30	61.3	83.9	97.9	135.9	220.6
	100	73.0	100.7	117.5	164.3	268.1
	200	79.7	110.2	128.7	180.6	295.4
鳳	10	46.9	63.0	77.1	110.0	164.2
	30	57.3	77.4	95.5	138.6	207.4
	100	68.4	92.9	115.3	169.3	253.7
	200	74.8	101.8	126.6	186.8	280.2

観測所	確率年	確率降雨量 (mm)				
		降雨継続時間				
		60分	120分	180分	360分	1440分
横山	10	49.9	66.1	77.7	102.5	166.6
	30	60.2	80.7	94.7	124.9	206.9
	100	71.1	96.4	113.0	148.9	250.1
	200	77.4	105.3	123.4	162.7	274.9
山滝	10	49.8	64.6	75.1	101.8	169.5
	30	61.6	79.6	92.8	127.4	215.3
	100	74.3	95.8	111.9	154.9	264.3
	200	81.5	105.0	122.8	170.6	292.4
岸和田	10	50.6	66.4	80.7	108.8	182.4
	30	62.5	82.6	101.3	137.0	233.6
	100	75.2	99.9	123.4	167.2	288.6
	200	82.5	109.9	136.1	184.5	320.1
日根野	10	48.7	70.3	88.3	118.2	199.8
	30	59.7	88.1	111.6	149.4	258.5
	100	71.4	107.1	136.7	182.9	321.5
	200	78.1	118.0	151.0	202.1	357.5
金熊寺	10	68.5	91.0	110.0	149.6	241.8
	30	86.5	115.2	140.2	190.4	310.0
	100	105.8	141.1	172.6	234.1	383.1
	200	116.9	155.9	191.1	259.1	424.9
尾崎	10	55.0	71.8	84.5	114.5	191.9
	30	66.7	87.4	103.2	141.1	239.7
	100	79.3	104.0	123.3	169.6	291.1
	200	86.4	113.6	134.8	185.9	320.4
三国	10	47.2	67.6	83.0	112.0	183.7
	30	57.0	83.2	102.9	139.5	228.8
	100	67.5	99.8	124.1	169.0	277.2
	200	73.5	109.4	136.2	185.9	304.9
大阪管区	10	54.9	72.6	85.2	113.2	172.3
	30	67.2	89.4	105.0	140.8	212.9
	100	80.3	107.4	126.3	170.5	256.4
	200	87.8	117.8	138.5	187.5	281.3

3. 各観測所の確率雨量表

解析データ期間：昭和21年～令和4年

観測所	確率年	確率降雨量(mm) 降雨継続時間				
		60分	120分	180分	360分	1440分
西能勢	10	63.3	85.2	96.8	122.2	196.4
	30	77.1	105.1	120.0	150.9	243.4
	100	92.4	126.6	144.6	181.6	293.8
	200	101.1	138.8	158.8	199.2	322.6
池田	10	63.7	82.6	95.9	130.3	197.6
	30	78.2	102.3	119.7	163.3	246.7
	100	94.3	123.4	145.5	198.7	299.5
	200	103.6	135.5	160.1	218.9	329.6
地黄	10	59.7	80.3	96.7	125.7	199.6
	30	73.4	99.3	121.0	157.4	249.8
	100	88.5	119.7	147.1	191.3	303.7
	200	97.2	131.5	162.0	210.7	334.6
高山	10	57.4	81.2	94.8	125.9	214.6
	30	69.4	99.4	116.2	154.4	268.7
	100	82.9	118.9	139.2	185.0	326.7
	200	90.6	130.0	152.4	202.5	359.9
見山	10	62.9	85.0	102.0	135.8	221.1
	30	76.5	104.2	125.2	165.8	274.1
	100	91.7	125.0	150.0	197.9	331.0
	200	100.4	136.8	164.2	216.3	363.5
茨木	10	52.5	67.3	80.3	111.0	180.6
	30	62.7	79.9	96.4	134.8	222.6
	100	74.1	93.5	113.7	160.3	267.8
	200	80.6	101.2	123.6	175.0	293.6
原	10	61.0	80.6	92.2	123.8	199.2
	30	74.1	98.5	113.2	152.0	248.0
	100	88.6	117.6	135.7	182.3	300.4
	200	97.0	128.5	148.6	199.6	330.3
樫田	10	68.6	93.3	111.2	143.8	226.8
	30	84.7	116.2	138.9	178.9	283.3
	100	102.4	140.7	168.6	216.6	344.0
	200	112.6	154.6	185.5	238.1	378.6

観測所	確率年	確率降雨量(mm) 降雨継続時間				
		60分	120分	180分	360分	1440分
田原	10	51.5	70.5	79.8	103.9	174.6
	30	62.2	86.3	97.2	125.1	213.5
	100	74.0	103.3	116.0	147.8	255.0
	200	80.8	112.9	126.7	160.8	278.9
枚方	10	52.1	68.4	79.2	103.1	173.3
	30	63.2	82.4	95.7	123.5	211.1
	100	75.5	97.4	113.3	145.3	251.7
	200	82.5	106.0	123.4	157.8	274.8
八尾	10	48.9	64.9	75.6	99.8	161.5
	30	58.8	79.2	92.8	122.8	200.8
	100	69.8	94.7	111.3	147.4	243.1
	200	76.2	103.6	121.9	161.5	267.2
枚岡	10	54.0	67.6	76.1	99.6	164.0
	30	65.4	82.2	92.3	120.7	201.0
	100	78.3	97.7	109.9	143.5	240.7
	200	85.6	106.6	119.9	156.5	263.5
柏原	10	45.9	57.3	65.9	81.1	139.6
	30	55.2	69.3	79.8	97.4	170.3
	100	65.7	82.0	94.8	115.0	203.2
	200	71.7	89.2	103.2	125.0	222.0
富田林	10	52.1	65.2	73.8	92.0	142.9
	30	63.6	79.4	89.9	110.5	174.6
	100	76.4	94.4	107.0	130.2	208.4
	200	83.8	103.1	116.8	141.5	227.7
千早	10	49.5	67.2	77.0	102.7	169.7
	30	58.9	81.0	93.1	124.7	210.0
	100	69.4	95.9	110.4	148.3	253.1
	200	75.5	104.4	120.3	161.8	277.9
鳳	10	51.6	68.0	83.7	106.9	173.6
	30	61.7	81.8	102.3	130.0	213.5
	100	73.0	96.7	122.2	154.9	256.2
	200	79.5	105.2	133.5	169.1	280.7

観測所	確率年	確率降雨量(mm) 降雨継続時間				
		60分	120分	180分	360分	1440分
横山	10	51.6	68.0	83.7	106.9	173.6
	30	61.7	81.8	102.3	130.0	213.5
	100	73.0	96.7	122.2	154.9	256.2
	200	79.5	105.2	133.5	169.1	280.7
山滝	10	52.7	66.8	78.1	102.3	170.7
	30	64.1	81.0	95.5	125.7	212.3
	100	76.6	96.2	114.1	150.8	257.1
	200	83.9	104.9	124.7	165.1	282.6
岸和田	10	48.8	66.7	79.4	106.3	173.3
	30	59.2	81.7	98.2	131.3	216.6
	100	70.9	98.0	118.4	158.2	263.1
	200	77.6	107.2	130.1	173.5	289.7
日根野	10	50.3	71.6	89.6	121.5	199.9
	30	61.5	88.5	112.8	152.7	254.4
	100	73.9	106.7	137.8	186.3	312.8
	200	81.1	117.1	152.1	205.4	346.1
金熊寺	10	62.3	80.3	97.8	133.9	233.5
	30	76.0	97.8	121.4	165.5	294.8
	100	91.5	116.5	146.6	199.4	360.6
	200	100.2	127.3	161.1	218.8	398.2
尾崎	10	54.2	74.5	89.0	118.2	202.6
	30	65.0	90.7	109.4	145.1	253.2
	100	76.9	108.2	131.4	173.9	307.5
	200	83.8	118.2	143.9	190.4	338.5
三国	10	46.9	64.3	77.0	104.4	181.8
	30	55.9	77.3	93.4	127.2	225.2
	100	65.9	91.3	111.2	151.6	271.5
	200	71.6	99.4	121.3	165.6	298.2
大阪管区	10	53.0	67.0	76.6	99.4	166.6
	30	64.0	81.3	92.7	120.4	203.7
	100	76.3	96.7	110.0	142.9	243.6
	200	83.2	105.5	119.9	155.8	266.5